

34

35

36

6

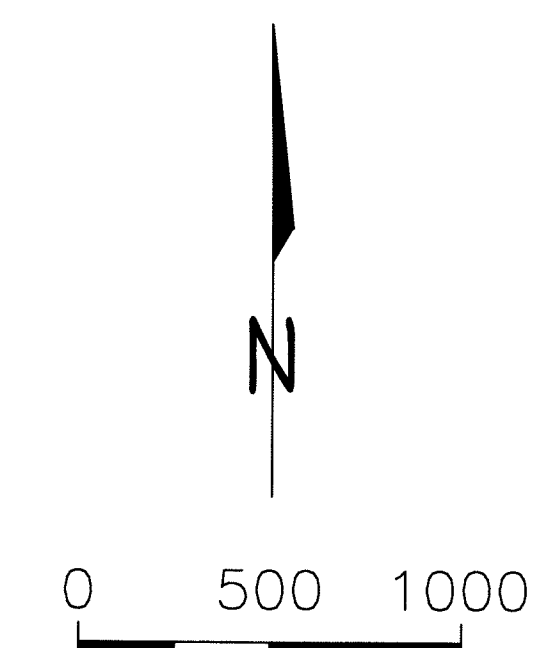
T28N  
T27N

T28N  
T27N

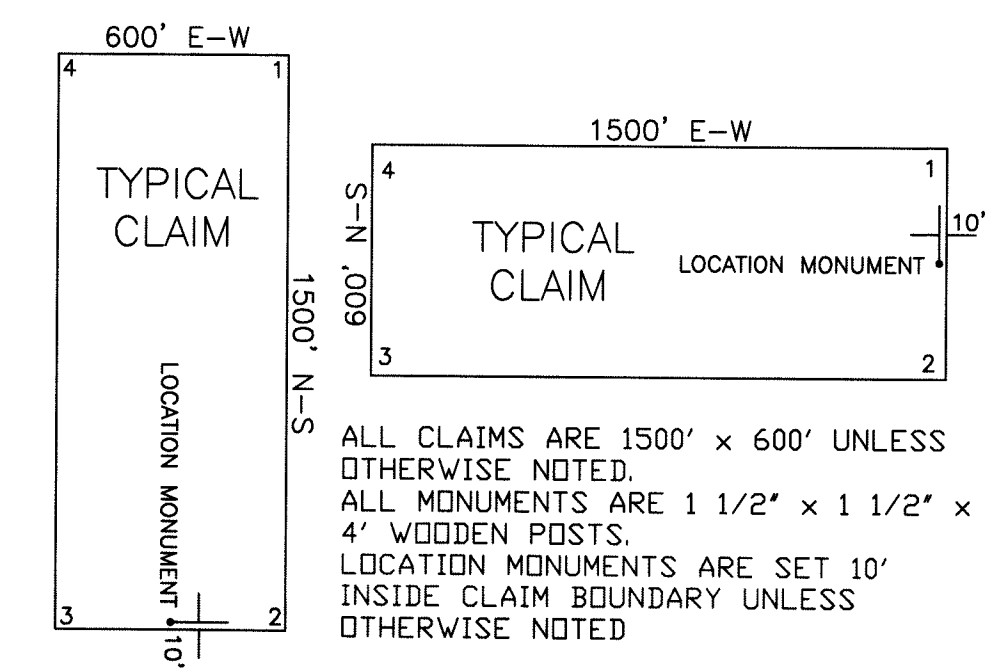
10,200' E-W

R48E  
R49E

MTB 62	MTB 63	MTB 113	MTB 114	MTB 165	MTB 186	MTB 187
MTB 64	MTB 65	MTB 115	MTB 116	MTB 166	MTB 188	MTB 189
MTB 66	MTB 67	MTB 117	MTB 118	MTB 168	MTB 190	MTB 191
MTB 68	MTB 69	MTB 119	MTB 120	MTB 169	MTB 192	MTB 193
MTB 70	MTB 71	MTB 121	MTB 122	MTB 170	MTB 194	MTB 195
MTB 72	MTB 73	MTB 123	MTB 124	MTB 171	MTB 196	MTB 197
MTB 74	MTB 75	MTB 125	MTB 126	MTB 172	MTB 198	MTB 199
MTB 76	MTB 77	MTB 127	MTB 128	MTB 173	MTB 200	MTB 201
MTB 78	MTB 79	MTB 129	MTB 130	MTB 174	MTB 202	MTB 203
MTB 80	MTB 81	MTB 131	MTB 132	MTB 175	MTB 204	MTB 205
MTB 82	MTB 83	MTB 133	MTB 134	MTB 176	MTB 206	MTB 207
MTB 84	MTB 85	MTB 135	MTB 136	MTB 177	MTB 208	MTB 209
MTB 86	MTB 87	MTB 137	MTB 138		MTB 210	MTB 211
MTB 88	MTB 89	MTB 139	MTB 140		MTB 212	MTB 213
MTB 90	MTB 91	MTB 141	MTB 142		MTB 214	MTB 215
MTB 92	MTB 93	MTB 143	MTB 144		MTB 216	MTB 217
MTB 94	MTB 95	MTB 145	MTB 146		MTB 218	MTB 219



SCALE  
U.S. Survey Foot  
Protracted Section Source  
Nevada BLM GCDB



- CLAIM LOCATION DATES:**
- August 10, 2012: MTB 206-237
  - August 11, 2012: MTB 166-169, 186-205
  - August 13, 2012: MTB 182-185, 157-164
  - August 14, 2012: MTB 92-112
  - August 15, 2012: MTB 84-91, 165
  - August 16, 2012: MTB 68-83, 113-128, 170-173
  - August 17, 2012: MTB 62-67, 145-156, 178-181
  - August 18, 2012: MTB 129-144, 174-177

**TIE POINTS:**  
The NW corner of MTB 62 is located approximately 5011 feet south and 5523 feet east of the NW Corner of Section 34, T28N, R48E, M.D.M.  
The NW corner of MTB 94 is located approximately 14,611 feet south and 5523 feet east of the NW Corner of Section 34, T28N, R48E, M.D.M.

**LODE MINING CLAIM MAP**  
**MTB 62-237**  
T27-28N, R48-49E, M.D.M.  
EUREKA COUNTY, NEVADA

Locator: BARRICK GOLD U.S. INC.  
460 WEST 50 NORTH, SUITE 500  
SALT LAKE CITY, UTAH 84101

Drawn By: ARD      OCTOBER 2012      SHEET 1 OF 2

DOC # 0222011  
11/06/2012 11:16 AM  
Official Record  
Recording requested by BARRICK GOLD US, INC.  
Eureka County - NV  
Mike Rebaletti - Recorder  
Fee: \$2,644.00 Page 1 of 2  
PRTT Recorded By: FES  
Book- Page- 0000

0222011



T27N

MTB 92

MTB 93

MTB 143

MTB 144

12

MTB 216

MTB 217

18

MTB 94

MTB 95

MTB 145

MTB 146

MTB 218

MTB 219

MTB 96

MTB 97

MTB 147

MTB 148

MTB 178

MTB 180

MTB 220

MTB 221

MTB 98

MTB 99

MTB 149

MTB 150

MTB 222

MTB 223

MTB 100

MTB 101

MTB 151

MTB 152

MTB 179

MTB 181

MTB 224

MTB 225

MTB 102

MTB 103

MTB 153

MTB 154

MTB 226

MTB 227

MTB 104

MTB 105

MTB 155

MTB 156

MTB 228

MTB 229

MTB 106

MTB 107

MTB 157

MTB 158

MTB 182

MTB 184

MTB 230

MTB 231

MTB 108

MTB 109

MTB 159

MTB 160

MTB 232

MTB 233

MTB 110

MTB 111

MTB 161

MTB 162

MTB 183

MTB 185

MTB 234

MTB 235

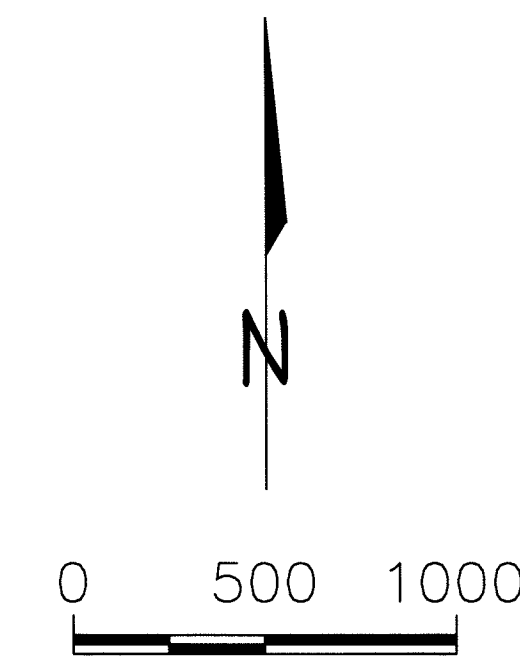
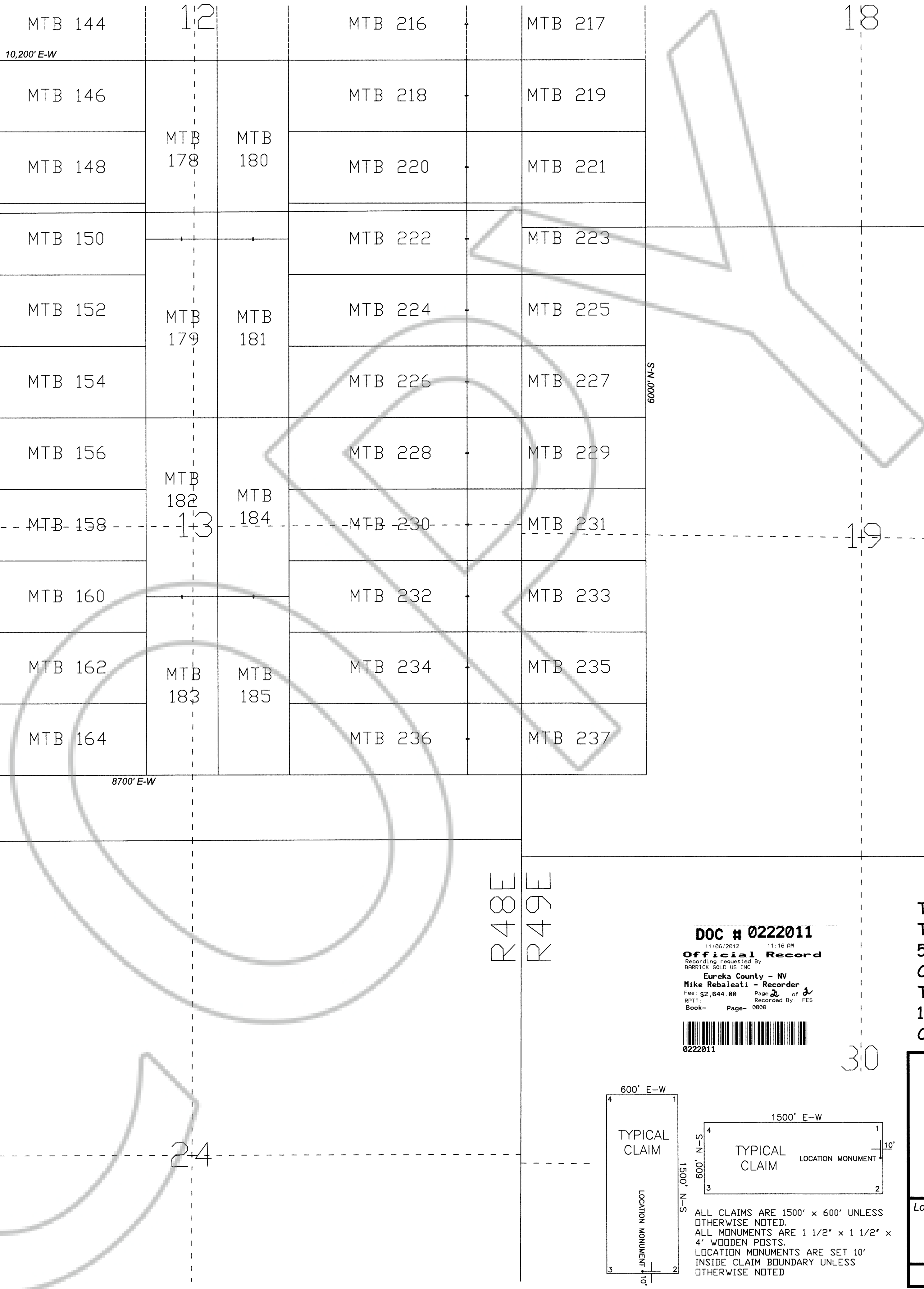
MTB 112

MTB 163

MTB 164

MTB 236

MTB 237

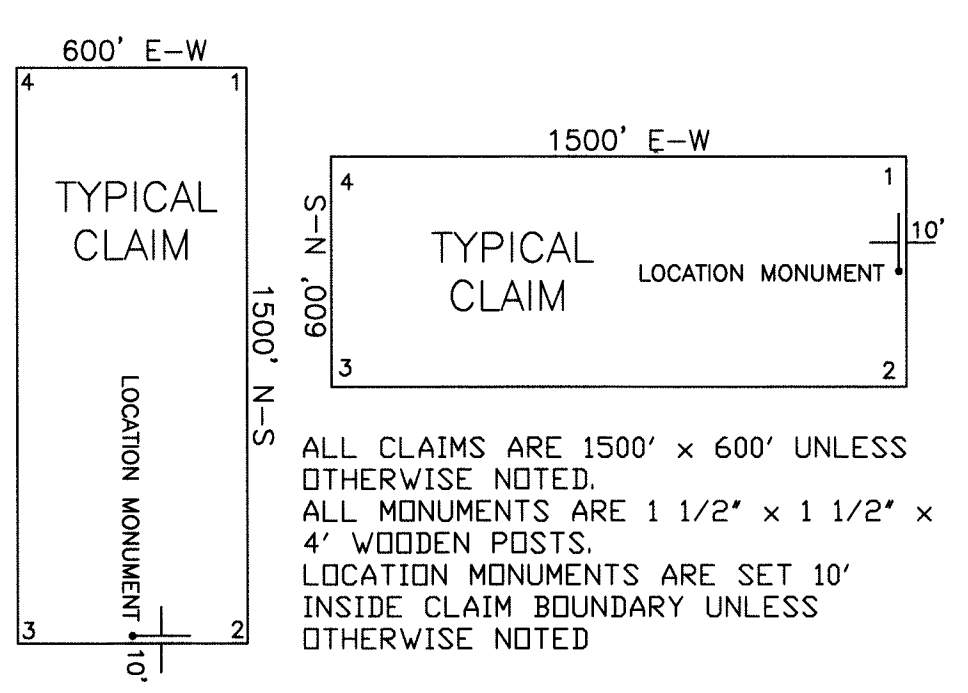


SCALE  
U.S. Survey Foot  
Protracted Section Source  
Nevada BLM GCDB

- CLAIM LOCATION DATES:**  
 August 10, 2012: MTB 206-237  
 August 11, 2012: MTB 166-169, 186-205  
 August 13, 2012: MTB 182-185, 157-164  
 August 14, 2012: MTB 92-112  
 August 15, 2012: MTB 84-91, 165  
 August 16, 2012: MTB 68-83, 113-128, 170-173  
 August 17, 2012: MTB 62-67, 145-156, 178-181  
 August 18, 2012: MTB 129-144, 174-177

**TIE POINTS:**  
 The NW corner of MTB 62 is located approximately 5011 feet south and 5523 feet east of the NW Corner of Section 34, T28N, R48E, M.D.M.  
 The NW corner of MTB 94 is located approximately 14,611 feet south and 5523 feet east of the NW Corner of Section 34, T28N, R48E, M.D.M.

**DOC # 0222011**  
 11/06/2012 11:16 AM  
**Official Record**  
 Recording requested by  
 BARRICK GOLD U.S. INC.  
 Eureka County - NV  
 Mike Rebaleari - Recorder  
 Fee: \$2,644.00 Page 2 of 2  
 Book- 0000 Recorded By: FES  
 Page- 0000



**LODE MINING CLAIM MAP**  
**MTB 62-237**  
 T27-28N, R48-49E, M.D.M.  
 EUREKA COUNTY, NEVADA

Locator:  
 BARRICK GOLD U.S. INC.  
 460 WEST 50 NORTH, SUITE 500  
 SALT LAKE CITY, UTAH 84101

Drawn By: ARD      OCTOBER 2012      SHEET 2 OF 2

5400' N-S

1500' E-W

600' N-S

8700' E-W

R48E  
R49E

23

24

30

20