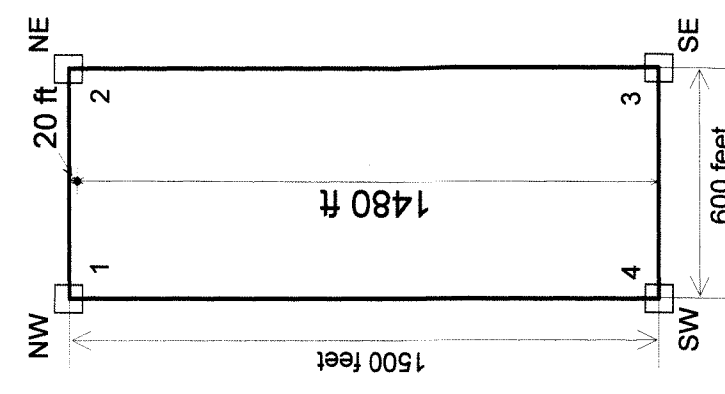


TYPICAL CLAIM



LEGEND

- claim corner
- location monument

SR claims
 Unknown Mining District
 Eureka County, Nevada
 Sections 4, 5, 8, 9, 16, and 17,
 T21N R51E, MDB&M

Located By: Gregory T. Hill,
 agent for:
Kinetic Gold (US) Inc.
 5375 Kietzke Lane, Suite 110
 Reno, Nevada 89511

Date: November 16, 2012
 Drawn by: G. Hill

NOTES: tie point - NW corner of SR 15 is approximately 187 feet West and 278 feet North of common corner Sec. 4, Sec. 5, Sec. 8, and Sec. 9, T21N R51E, MDB&M

All monuments are 2 inch by 4 inch by 4 inch long wooden posts with a scribed metal tag

- Location Dates:
 9 September 2012 - SR 1-20,
 10 September 2012 - SR 21-30,
 26 October 2012 - SR 31-36,
 27 October 2012 - SR 37-52,
 28 October 2012 - SR 53-65

DOC # 0222258
 11/20/2012 02:15 PM
Official Record
 Eureka County - NV
 Mike Rebalett, Recorder
 Book- 375-06 Page- 000