

36

31

32

33

TOWNSHIP 16 NORTH
TOWNSHIP 15 NORTHRANGE 52 EAST
RANGE 53 EASTFound GLO Brass
Cap for the SE
Standard Corner
Section 36

SURVEYOR'S CERTIFICATE

I, Kevin D. Haskew, A Professional Land Surveyor, Licensed in The State
Of Nevada, certify that:

- 1) This plat represents the results of a survey conducted under my direct supervision at the instance of American Vanadium US Inc., a Nevada corporation, (owner).
- 2) The mining claims surveyed lie within T 15 N, R 52 E, MDM, Sections 1-3 & 10-13; unsurveyed T 15 N, R 53 E, MDM, sections 5-8, 17 & 18; unsurveyed T 16 N, R 52 E section 36; unsurveyed T 16 N, R 53 E, MDM, sections 31 & 32, and the survey was completed on
- 3) This plat complies with applicable statutes of this state and any local ordinances in effect on the date that the survey was completed, and the survey was conducted in accordance with Chapter 625 of the Nevada Administrative Code.
- 4) The monuments depicted on the plat are of the character shown, occupy the positions indicated and are of sufficient number and durability.
- 5) The Section lines protracted on this map are from the BLM GCDB.

CLAIM LOCATION DATES:

AV12080 TO AV12094
AV12095, AV12096, AV12098 TO AV12111
AV12112 TO AV12130NOVEMBER 16, 2012
NOVEMBER 17, 2012
NOVEMBER 25, 2012

LEGEND

These standard symbols will
be found in the drawing.

- SECTION LINE
- QUARTER SECTION LINE
- SET 2"x2"x4" POST LOCATION MONUMENT
- SET 2"x2"x4" POST
- SECTION AND QUARTER CORNERS found

BASIS OF BEARING AND SECTION LINE PROJECTION:
BASED ON BLM GCDB

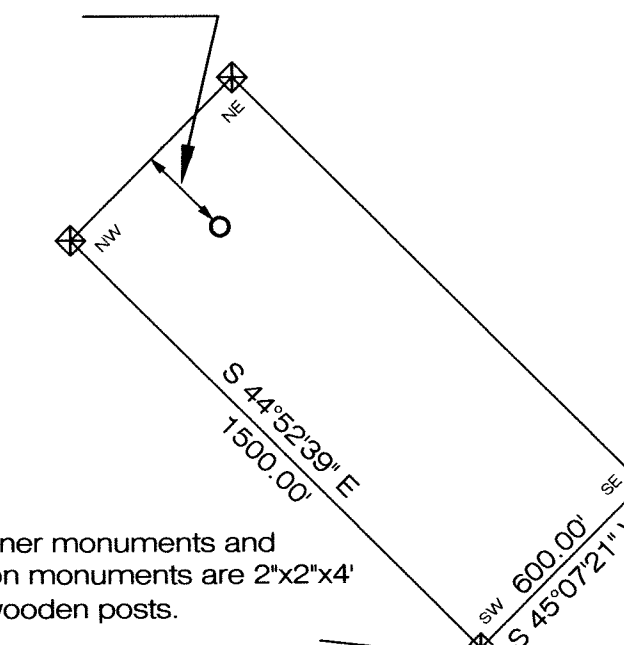
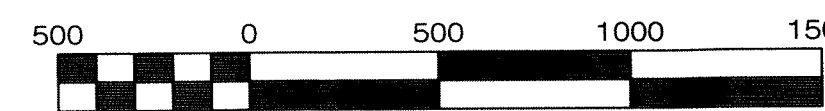
ASAPS

KEVIN D. HASKEW
ADVANCED SURVEYING &
PROFESSIONAL SERVICES
PO BOX 3163
TONOPAH, NV 89049
1-775-482-4163Claims in unsurveyed T 15 N, R 52 E, MDM, Section 1-3 &
10-13; unsurveyed T 15 N, R 53 E, MDM Sections 5-8, 17
& 18; unsurveyed T 16 N, R 52 E, MDM section 36;
unsurveyed T 16 N, R 53 E, MDM sections 31 & 32

Map Of:

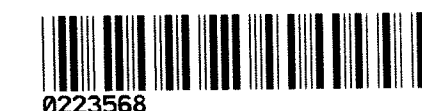
AV12013-AV12053, AV12060-AV12096
AV12098-AV12178, AV12180-AV12197
LODE CLAIMS
Eureka County, Nevada

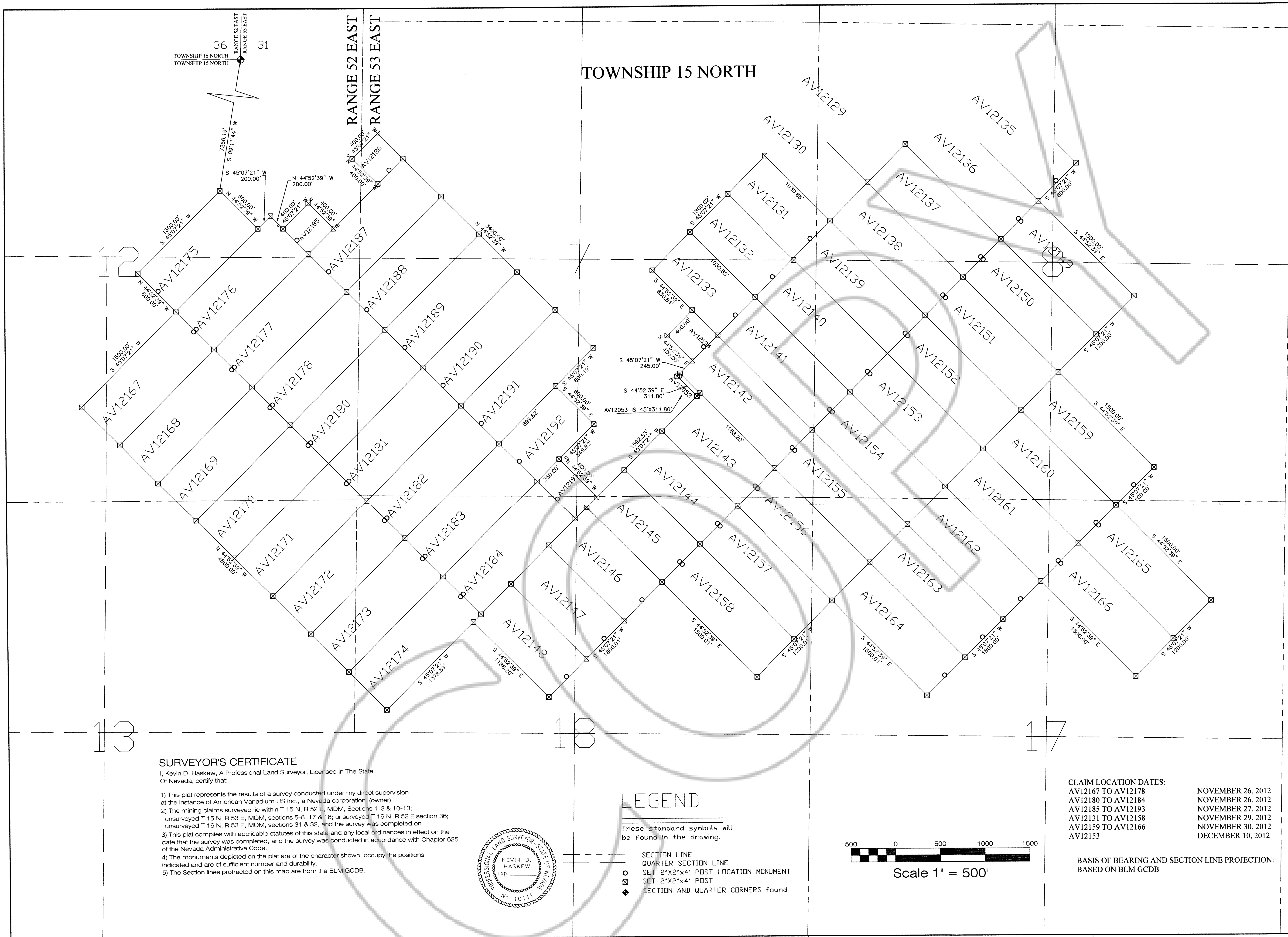
Located For:

American Vanadium US Inc.
PO Box 983
Eureka, NV 89316Typical Claims
unless otherwise notedLocation Monuments are 20' from
endline unless otherwise notedAll corner monuments and
location monuments are 2"x2"x4"
wooden posts.

page 1 of 5

DOC # 0223568

12/18/2012 09:46 AM
Official Record
Recorded by REQUESTED BY
AMERICAN VANADIUM US INC.
Eureka County - NV
Mike Rebleati - Recorder
Fee \$2,658.00 Page 1 of 5
RPTT Recorded By: FES
Book- Page- 0000



SURVEYOR'S CERTIFICATE

I, Kevin D. Haskew, A Professional Land Surveyor, Licensed in The State Of Nevada, certify that:

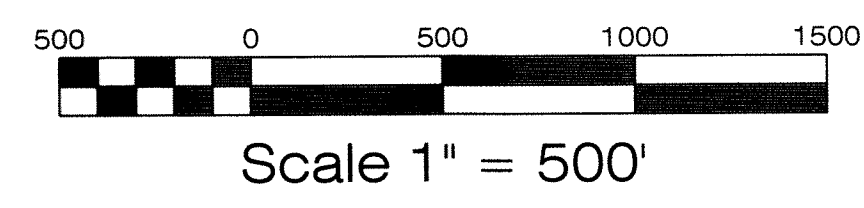
- 1) This plat represents the results of a survey conducted under my direct supervision at the instance of American Vanadium US Inc., a Nevada corporation (owner).
- 2) The mining claims surveyed lie within T 15 N, R 52 E, MDM, Sections 1-3 & 10-13; unsurveyed T 15 N, R 53 E, MDM, sections 5-8, 17 & 18; unsurveyed T 16 N, R 52 E section 36; unsurveyed T 16 N, R 53 E, MDM, sections 31 & 32, and the survey was completed on
- 3) This plat complies with applicable statutes of this state and any local ordinances in effect on the date that the survey was completed, and the survey was conducted in accordance with Chapter 625 of the Nevada Administrative Code.
- 4) The monuments depicted on the plat are of the character shown, occupy the positions indicated and are of sufficient number and durability.
- 5) The Section lines protracted on this map are from the BLM GCDB.



LEGEND

These standard symbols will be found in the drawing.

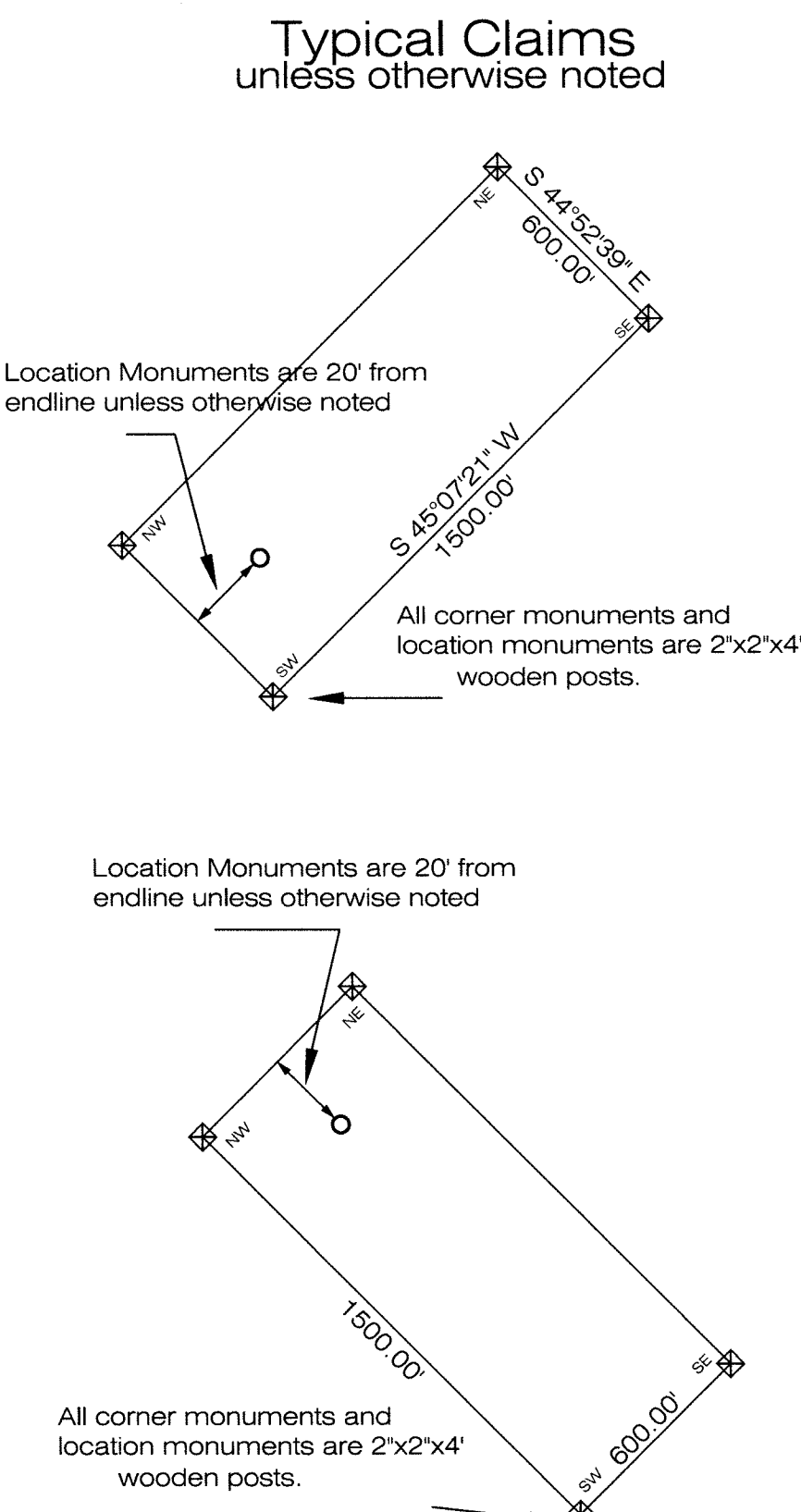
- SECTION LINE
- QUARTER SECTION LINE
- SET 2"x2"x4" POST LOCATION MONUMENT
- SET 2"x2"x4" POST
- ◆ SECTION AND QUARTER CORNERS found



CLAIM LOCATION DATES:

AV12167 TO AV12178	NOVEMBER 26, 2012
AV12180 TO AV12184	NOVEMBER 26, 2012
AV12185 TO AV12193	NOVEMBER 27, 2012
AV12131 TO AV12158	NOVEMBER 29, 2012
AV12159 TO AV12166	NOVEMBER 30, 2012
AV12153	DECEMBER 10, 2012

BASIS OF BEARING AND SECTION LINE PROJECTION:
BASED ON BLM GCDB



ASAPS

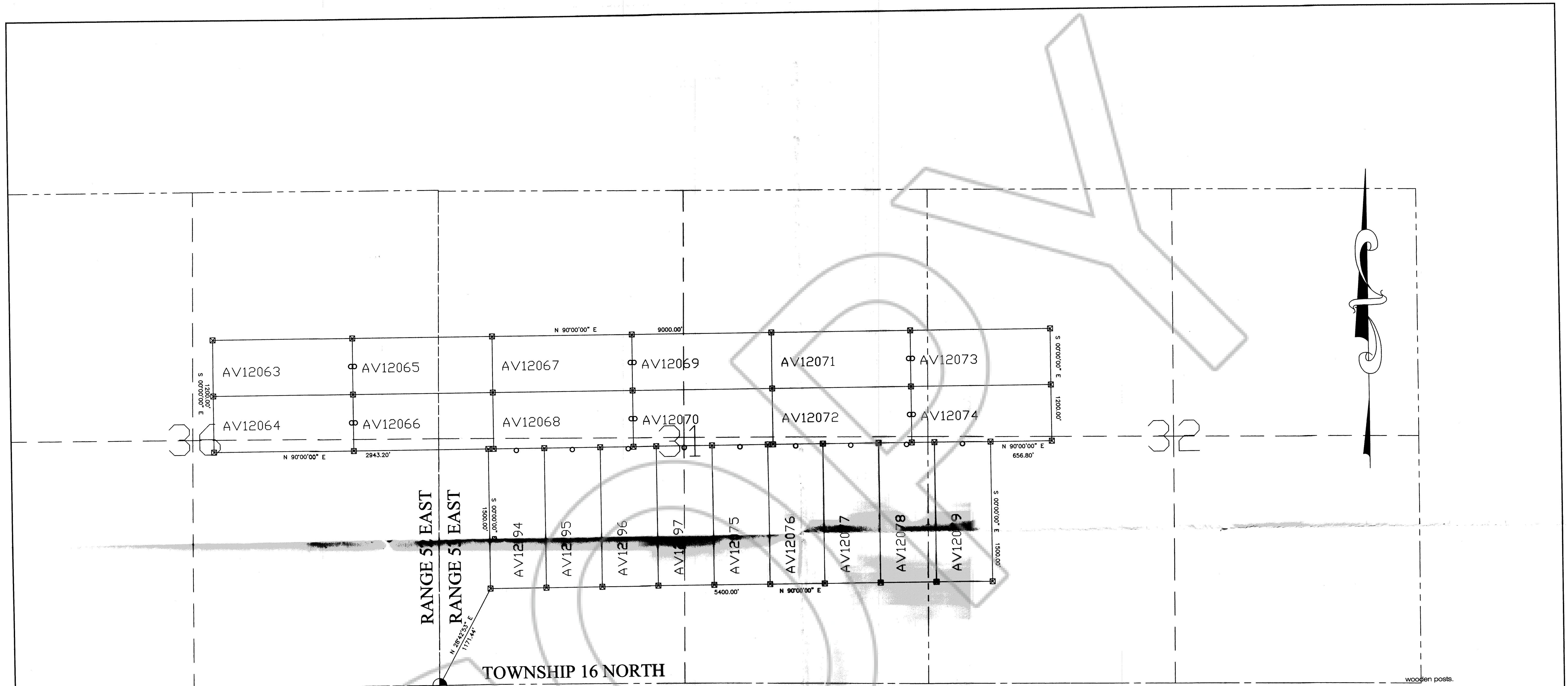
KEVIN D. HASKEW
ADVANCED SURVEYING &
PROFESSIONAL SERVICES
PO BOX 3163
TONOPAH, NV 89049
1-775-482-4163

Claims in unsurveyed T 15 N, R 52 E, MDM, Section 1-3 & 10-13; unsurveyed T 15 N, R 53 E, MDM Sections 5-8, 17 & 18; unsurveyed T 16 N, R 52 E, MDM section 36; unsurveyed T 16 N, R 53 E, MDM sections 31 & 32

Map Of:
AV12013-AV12053, AV12060-AV12096
AV12098-AV12178, AV12180-AV12197
LODE CLAIMS
Eureka County, Nevada

Located For:
American Vanadium US Inc.
PO Box 983
Eureka, NV 89316

DOC # 0223568
12/16/2012 09:46 AM
Official Record
Recorded Requested By:
AMERICAN VANADIUM US INC.
Eureka County - NV
Mike Rebaletti - Recorder
Fee: \$2,659.00 Page 2 of 5
RPTT Recorded By: FES
Book- Page- 0000



Found GLO Brass
Cap for the SE
Standard Corner
Section 36

TIE POINT
FROM THE SOUTHEAST CORNER OF SECTION 36,
TOWNSHIP 16 NORTH, RANGE 52 EAST, MDM TO THE
SOUTHWEST CORNER OF AV12194 IS N28°42'53"E A
DISTANCE OF 1,171.44 FEET.

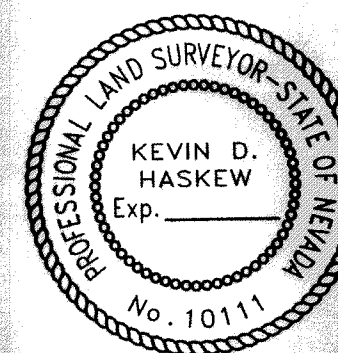
CLAIM LOCATION DATES:
AV12063 TO AV12079 AND AV12194 TO AV12197 NOVEMBER 13, 2012

BASIS OF BEARING AND SECTION LINE PROJECTION:
BASED ON BLM GCDB

SURVEYOR'S CERTIFICATE

I, Kevin D. Haskew, A Professional Land Surveyor, Licensed in The State
Of Nevada, certify that:

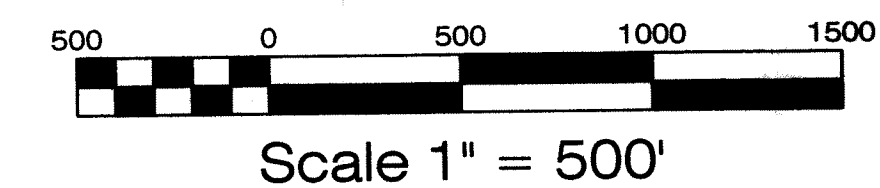
- 1) This plat represents the results of a survey conducted under my direct supervision at the instance of American Vanadium US Inc., a Nevada corporation, (owner).
- 2) The mining claims surveyed lie within T 15 N, R 52 E, MDM, Sections 1-3 & 10-13; unsurveyed T 15 N, R 53 E, MDM, sections 5-8, 17 & 18; unsurveyed T 16 N, R 52 E section 36; unsurveyed T 16 N, R 53 E, MDM, sections 31 & 32, and the survey was completed on
- 3) This plat complies with applicable statutes of this state and any local ordinances in effect on the date that the survey was completed, and the survey was conducted in accordance with Chapter 625 of the Nevada Administrative Code.
- 4) The monuments depicted on the plat are of the character shown, occupy the positions indicated and are of sufficient number and durability.
- 5) The Section lines protracted on this map are from the BLM GCDB.



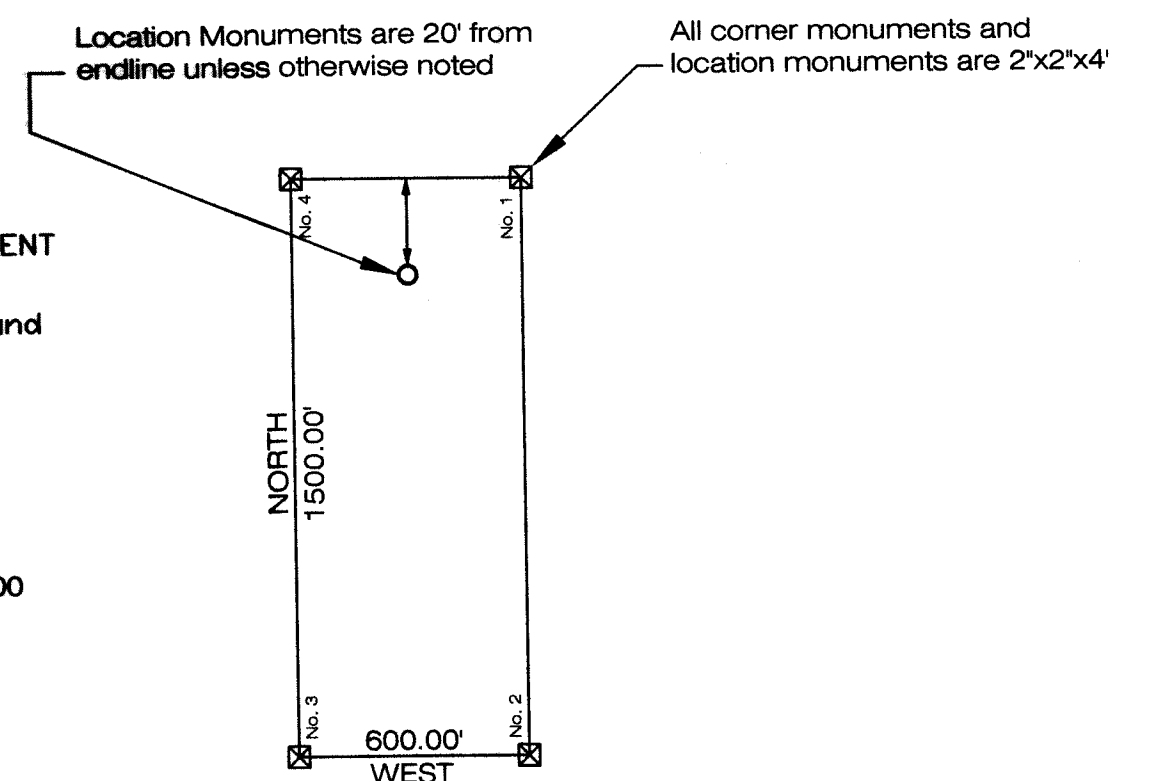
LEGEND

These standard symbols will
be found in the drawing.

- SECTION LINE
- - - QUARTER SECTION LINE
- SET 2"x2"x4" POST LOCATION MONUMENT
- ⊠ SET 2"x2"x4" POST
- ◆ SECTION AND QUARTER CORNERS Found



Typical Claims unless otherwise noted



ASAPS

KEVIN D. HASKEW
ADVANCED SURVEYING &
PROFESSIONAL SERVICES
PO BOX 3163
TONOPAH, NV 89049
1-775-482-4163

Claims in unsurveyed T 15 N, R 52 E, MDM, Section 1-3 &
10-13; unsurveyed T 15 N, R 53 E, MDM Sections 5-8, 17
& 18; unsurveyed T 16 N, R 52 E, MDM section 36;
unsurveyed T 16 N, R 53 E, MDM sections 31 & 32

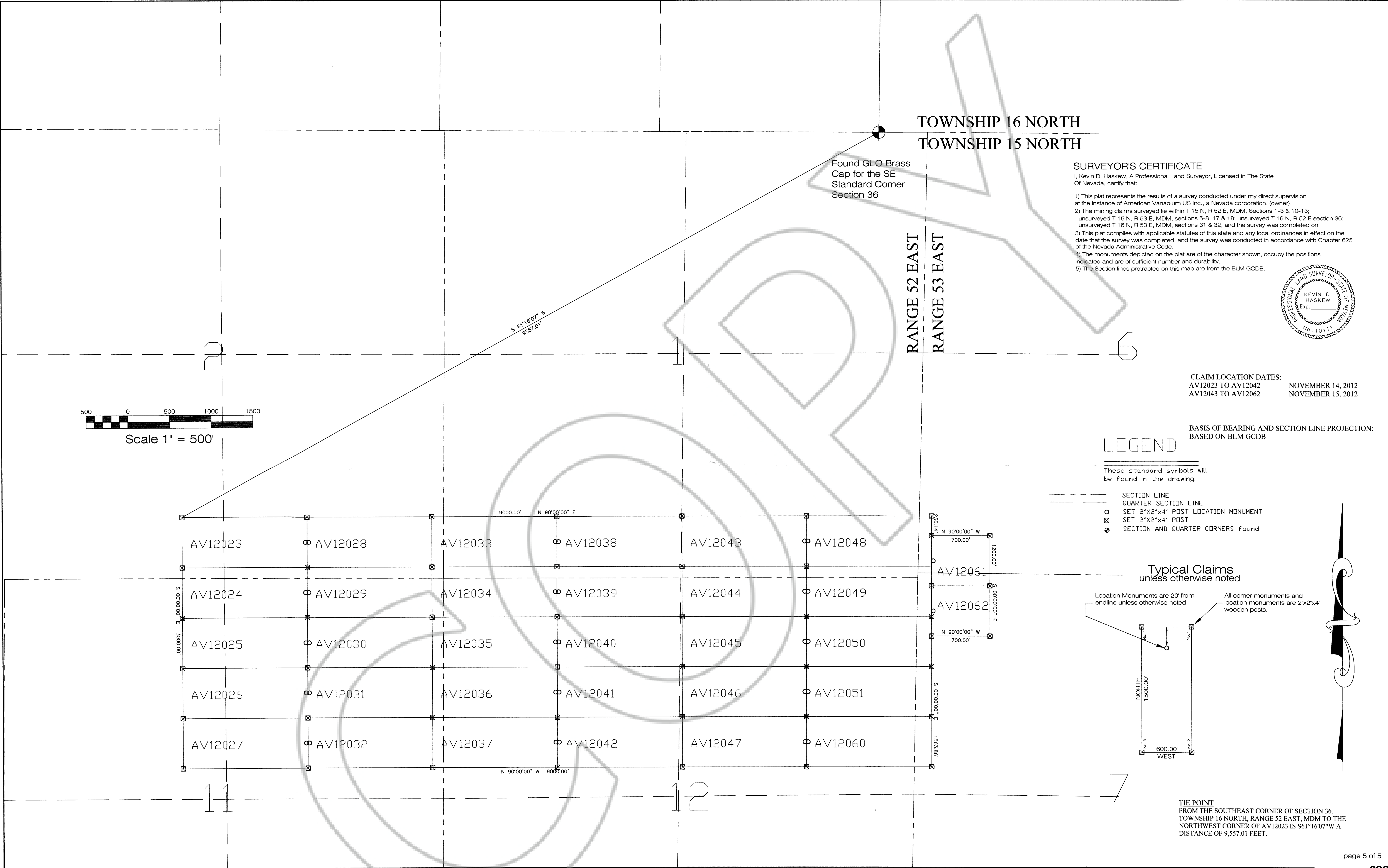
Map Of:

AV12013-AV12053, AV12060-AV12096
AV12098-AV12178, AV12180-AV12197
LODE CLAIMS
Eureka County, Nevada

Located For:

American Vanadium US Inc.
PO Box 983
Eureka, NV 89316





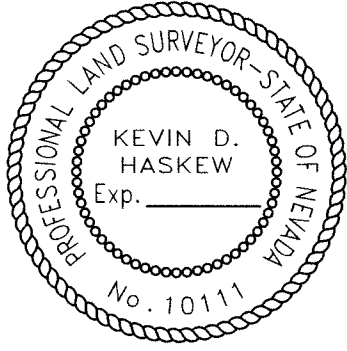
TOWNSHIP 16 NORTH
TOWNSHIP 15 NORTH

Found GLO Brass
Cap for the SE
Standard Corner
Section 36

SURVEYOR'S CERTIFICATE

I, Kevin D. Haskew, A Professional Land Surveyor, Licensed in The State Of Nevada, certify that:

- 1) This plat represents the results of a survey conducted under my direct supervision at the instance of American Vanadium US Inc., a Nevada corporation, (owner).
- 2) The mining claims surveyed lie within T 15 N, R 52 E, MDM, Sections 1-3 & 10-13; unsurveyed T 15 N, R 53 E, MDM, sections 5-8, 17 & 18; unsurveyed T 16 N, R 52 E section 36; unsurveyed T 16 N, R 53 E, MDM, sections 31 & 32, and the survey was completed on
- 3) This plat complies with applicable statutes of this state and any local ordinances in effect on the date that the survey was completed, and the survey was conducted in accordance with Chapter 625 of the Nevada Administrative Code.
- 4) The monuments depicted on the plat are of the character shown, occupy the positions indicated and are of sufficient number and durability.
- 5) The Section lines protracted on this map are from the BLM GCDB.



CLAIM LOCATION DATES:
AV12023 TO AV12042 NOVEMBER 14, 2012
AV12043 TO AV12062 NOVEMBER 15, 2012

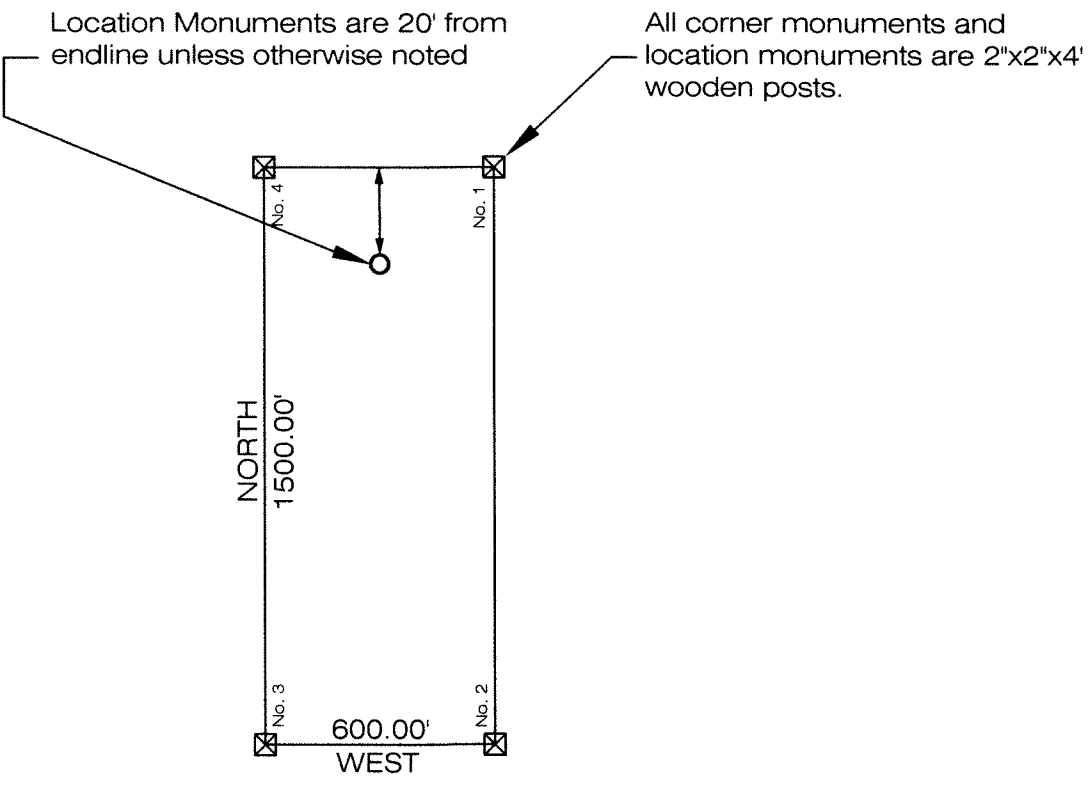
BASIS OF BEARING AND SECTION LINE PROJECTION:
BASED ON BLM GCDB

LEGEND

These standard symbols will be found in the drawing.

- SECTION LINE
- QUARTER SECTION LINE
- SET 2"x2"x4' POST LOCATION MONUMENT
- SET 2"x2"x4' POST
- SECTION AND QUARTER CORNERS found

Typical Claims unless otherwise noted



TIE POINT
FROM THE SOUTHEAST CORNER OF SECTION 36,
TOWNSHIP 16 NORTH, RANGE 52 EAST, MDM TO THE
NORTHWEST CORNER OF AV12023 IS S61°16'07" W A
DISTANCE OF 9,557.01 FEET.

ASAPS

KEVIN D. HASKEW
ADVANCED SURVEYING &
PROFESSIONAL SERVICES
PO BOX 3163
TONOPAH, NV 89049
1-775-482-4163

Claims in unsurveyed T 15 N, R 52 E, MDM, Section 1-3 & 10-13; unsurveyed T 15 N, R 53 E, MDM Sections 5-8, 17 & 18; unsurveyed T 16 N, R 52 E, MDM section 36; unsurveyed T 16 N, R 53 E, MDM sections 31 & 32

Map Of:
AV12013-AV12053, AV12060-AV12096
AV12098-AV12178, AV12180-AV12197
LODE CLAIMS
Eureka County, Nevada

Located For:
American Vanadium US Inc.
PO Box 983
Eureka, NV 89316