

GN 47
GN 49

The SE Corner of GN 49 bears N38°35'W and is 11,237' from the SE corner of Section 10 T25N R48E

GN 54
GN 56
GN 58
GN 60
GN 62

GN 83		GN 85		GN 86		GN 96		GN 97		GN 139	
GN 87		GN 88		GN 98		GN 99		GN 101		GN 137	
GN 89		GN 90		GN 100		GN 101		GN 103		GN 135	
GN 91		GN 92		GN 102		GN 103		GN 105		GN 133	
GN 93		GN 104		GN 105		GN 107		GN 109		GN 129	
GN 106		GN 110		GN 111		GN 113		GN 115		GN 127	
GN 107		GN 112		GN 113		GN 115		GN 117		GN 126	
GN 108		GN 114		GN 115		GN 117		GN 119		GN 128	
GN 109		GN 116		GN 117		GN 119		GN 121		GN 125	

T25N R48E

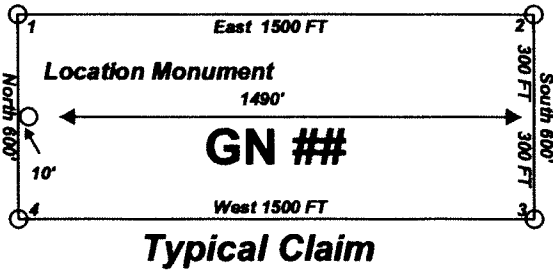
The NW Corner of GN 97 bears N12°25'W and is 4693' from the SE corner of Section 10 T25N R48E

The NW Corner of GN 136 bears N10°01'E and is 2827' from the SW corner of Section 11 T25N R48E

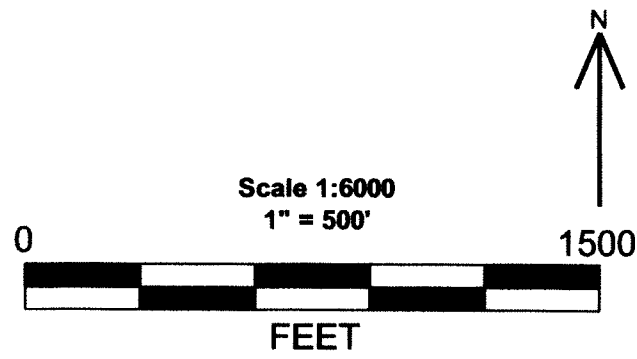
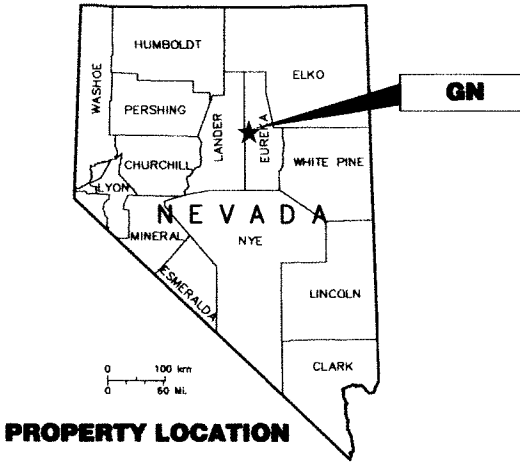
Location Map for  
GN 47, 49, 54, 56, 58, 60, 62,  
83, 85-93, 96-117, 126-137,  
and 139 Lode Mining Claims  
Sheet 1 of 1

GN 47, 49, 54, 56, 58, 60, 62, 83, 85-93,  
96-117, 126-137, and 139 were located on  
October 28, 2012 in Township 25 North  
Range 48 East, Sections 4, 9-11, 14 & 15 in  
Eureka County, Nevada.

Locator:  
Pyramid Lake LLC  
P.O. Box 6945  
Incline Village, NV 89450



Notes:  
Location Monuments are set 10' from  
claim end lines unless noted otherwise.  
All location and corner monuments are  
2" X 2" X 4' wooden posts with scribed  
metal tags. All claims are 600' by 1500'  
unless noted otherwise. All bearings  
are based on UTM North.



Location Map for GN 47...139  
Lode Mining Claims  
Sheet 1 of 1  
  
Pyramid Lake LLC  
P.O. Box 6945  
Incline Village, NV 89450  
  
GN\_47\_139\_N27Z11ft.dwg  
January 16, 2013  
Drawn By: G.I.S. Land Services  
  
Surveyed By: T&T Exploration L.L.C.  
Datum: 1927 Projection: UTM Zone 11  
Units: Feet

DOC # 0223715  
01/16/2013 03:36 PM  
Official Record  
Recording requested by  
PYRAMID LAKE LLC  
Eureka County - NV  
Mike Rebaletti - Recorder  
Fee: \$784.00 Page 1 of 1  
Book- 0000 Recorded By: FES  
0223715