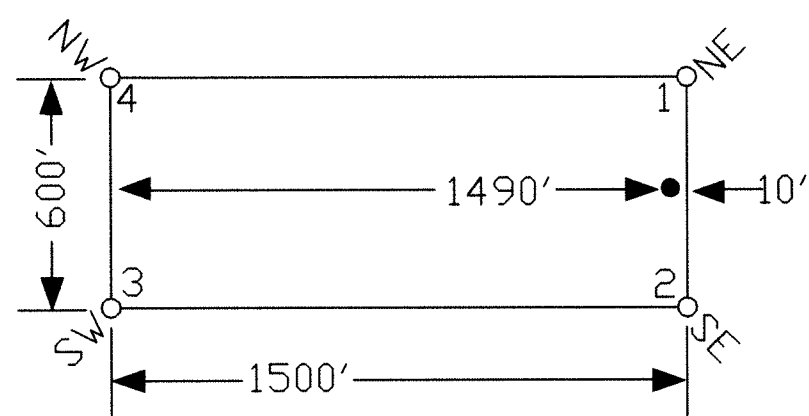
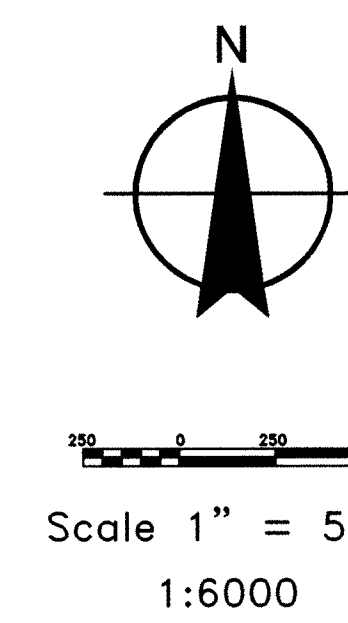


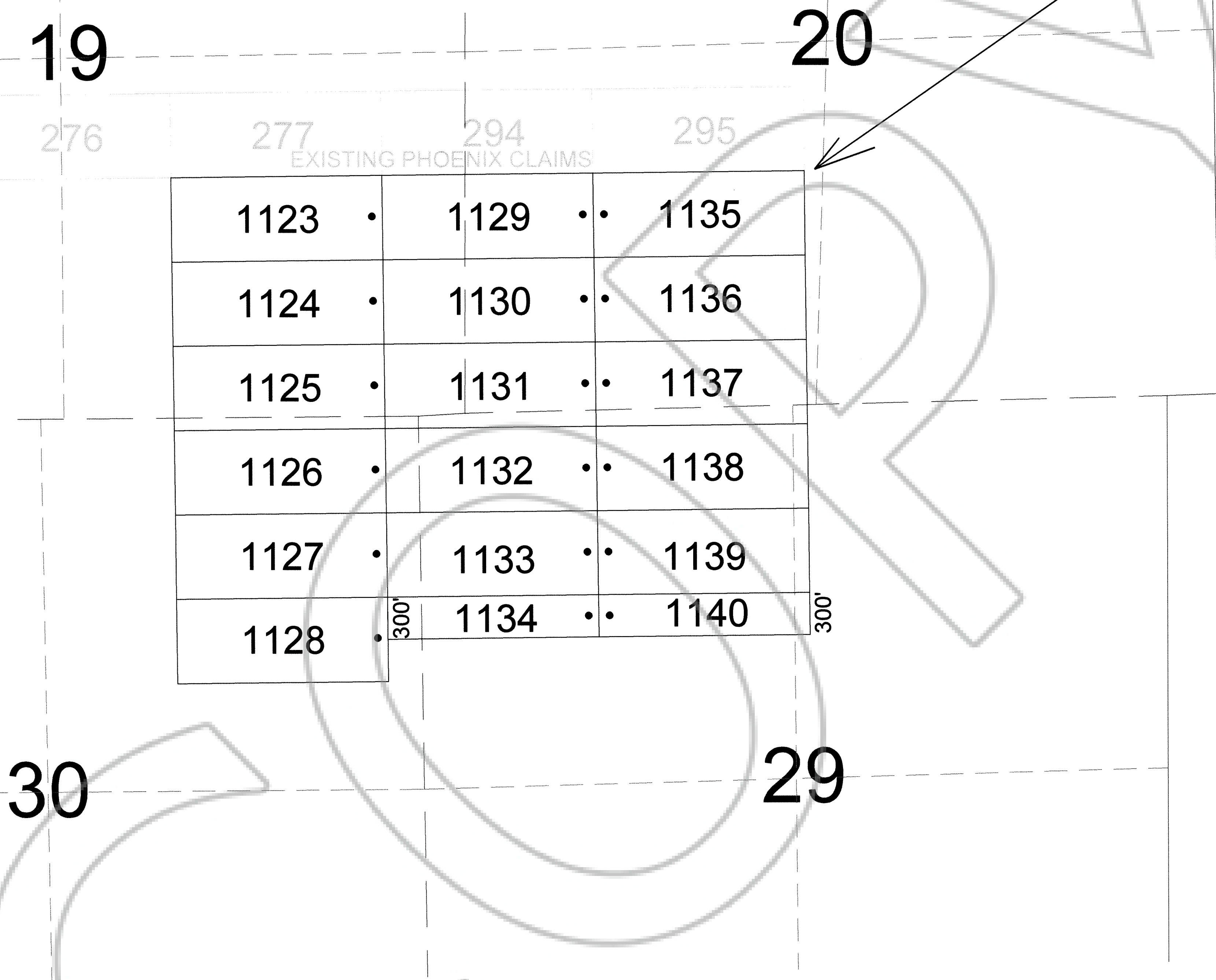
TYPICAL CLAIMS



TIE POINT DATA:
 THE NORTHEAST CORNER OF PHOENIX 1135 LIES APPROXIMATELY
 2,881 FEET WEST AND 3,595 FEET SOUTH OF THE NORTHEAST SURVEYED
 CORNER OF SECTION 20, T.26N., R.53E., M.D.B.M.



LOCATION DATES:
 April 17, 2013 - Phoenix 1123-1140
 (18 Total Claims)



276 277 294 295
 EXISTING PHOENIX CLAIMS

1123	•	1129	••	1135
1124	•	1130	••	1136
1125	•	1131	••	1137
1126	•	1132	••	1138
1127	•	1133	••	1139
1128	•	1134	••	1140

300' 300'

NOTES:
 LOCATION MONUMENTS SET 10' FROM CLAIM END
 CENTERLINES. ALL LOCATION MONUMENTS AND CLAIM
 POSTS ARE 2"x2"x4' WOODEN STAKES.

DASHED SECTION LINES INDICATE PROJECTED SECTIONS.

DOC # 0224147
 04/22/2013 02:07 PM
Official Record
 Recording Requested by:
 GOLDEN GRYPHON USA INC
 Eureka County - NV
 Mike Rebaletti - Recorder
 Fee: \$274.00 Page 1 of
 RPT1 Recorded By: FES
 Book- Page- 0000

369 - 5th STREET
 PH: (775) 778-0668 ELKO, NV 89801 FAX: (775) 778-0687

Locator:
Golden Gryphon USA Inc.
 1400 Tanager Place RR21, Roberts Creek, BC V0N 2W1
 Phoenix 1123-1140 Lode Claims
 T.26N., R.53E.; Eureka County, Nevada

DATE: April 2013
 PLOT SCALE: 1" = 500'

AGAO FILE NAME: C:\gryphon\phoenix\phm_0413.dwg
 DRAWN BY: sms