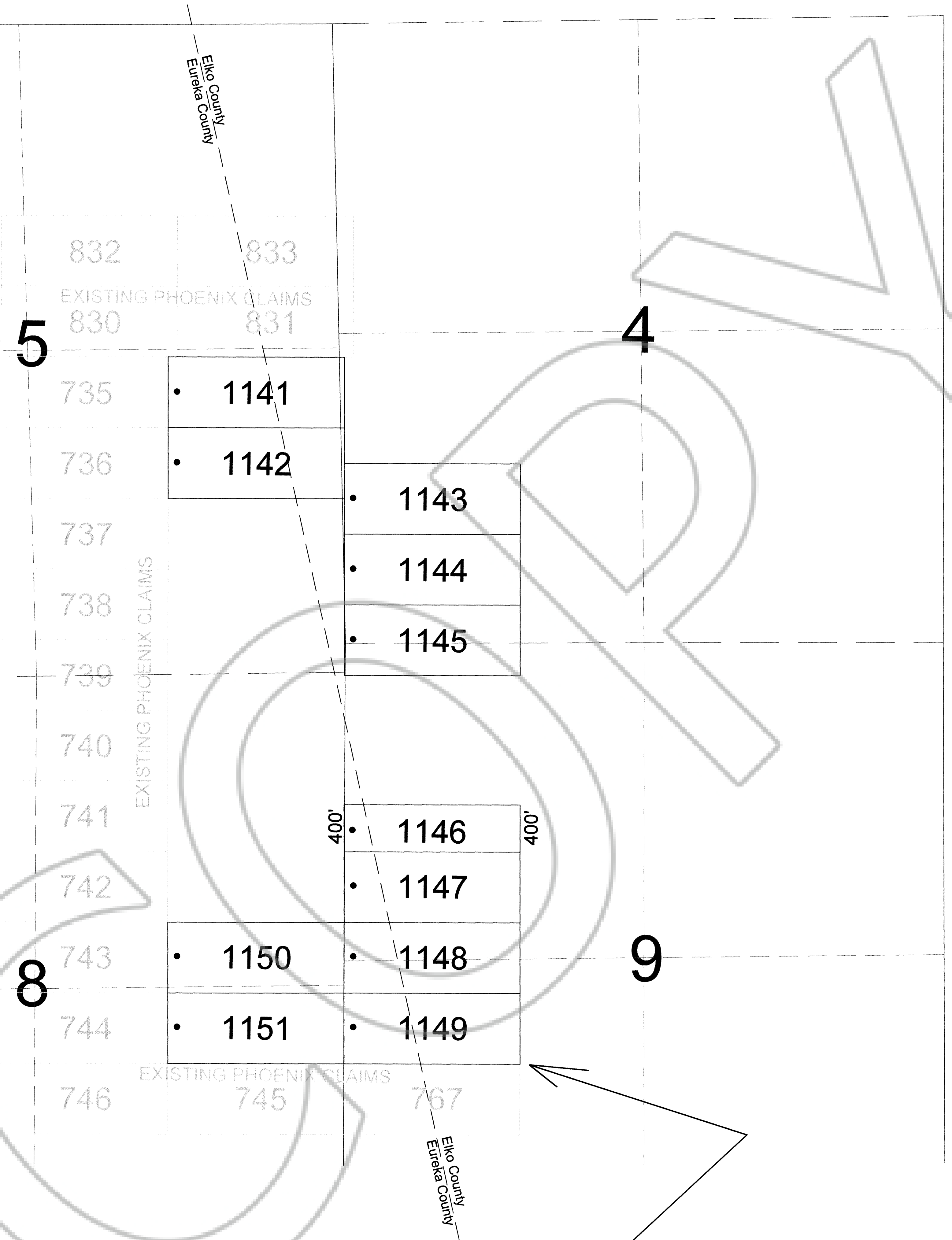
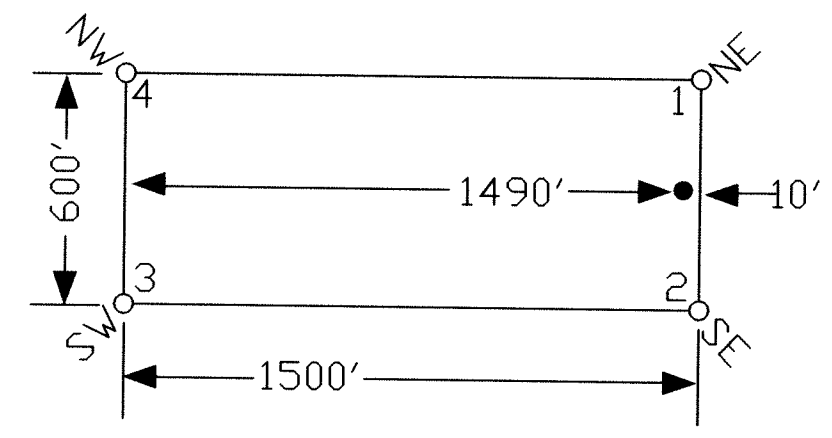


TYPICAL CLAIMS



LOCATION DATES:
 April 17, 2013 - Phoenix 1141-1151
 (11 Total Claims)

Eureka County Claims:
 Phoenix 1141-1142, 1146-1151

Elko County Claims:
 Phoenix 1141-1149

NOTES:
 LOCATION MONUMENTS SET 10' FROM CLAIM END CENTERLINES. ALL LOCATION MONUMENTS AND CLAIM POSTS ARE 2"x2"x4' WOODEN STAKES.
 DASHED SECTION LINES INDICATE PROJECTED SECTIONS.

TIE POINT DATA:
 THE SOUTHEAST CORNER OF PHOENIX 1149 LIES APPROXIMATELY 1.440 FEET EAST AND 7,250 FEET NORTH OF THE NORTHEAST SURVEYED CORNER OF SECTION 20, T.26N., R.53E., M.D.B.M.

DOC # 0224156
 Official Record
 Eureka County - NV
 Mike Rebaleati - Recorder
 Fee \$124.00 Page 1 of 1
 Book- Page- 0000

Locator:
 Golden Gryphon USA Inc.
 1400 Tanager Place RR21, Roberts Creek, BC VON 2W1
 Phoenix 1141-1151 Lode Claims
 T.26N., R.53E.; Eureka & Elko County, Nevada

369 - 5th STREET
 PH: (775) 778-0668 ELKO, NV 89801 FAX: (775) 778-0687

DATE: April 2013
 IACAD FILE NAME: C:\Users\j3\Documents\Phoenix\phn_0413.dwg
 DRAWN BY: jms