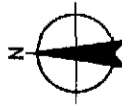


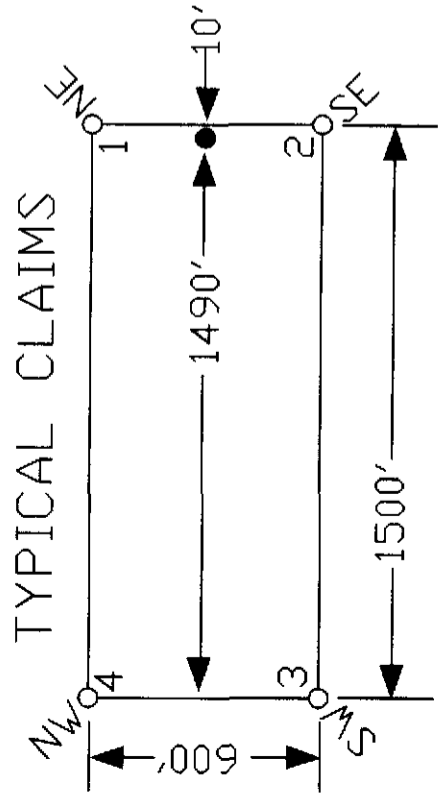
TIE POINT DATA:

THE NORTHWEST CORNER OF PHOENIX 937 LIES APPROXIMATELY 1,469 FEET EAST AND 2,535 FEET SOUTH OF THE NORTHWEST SURVEYED CORNER OF SECTION 12, T. 27N., R. 52E., M.D.B.M.



Scale 1" = 500'
1:6000

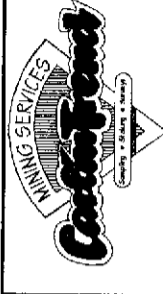
NOTES:
LOCATION MONUMENTS SET 10' FROM CLAIM END CENTERLINES. ALL LOCATION MONUMENTS AND CLAIM POSTS ARE 2"x2"x4' WOODEN STAKES.
DASHED SECTION LINES INDICATE PROJECTED SECTIONS.



LOCATION DATES:
June 11, 2013 - Phoenix 937, 938, 945, 946

DOC # 0224799

08/26/2013 01:20 PM
Official Record
Recording requested By
GOLDEN GRYPHON USA INC
Eureka County - NV
Mike Rebaleati - Recorder
Fee: \$64.00 Page 1 of
RPTT: Recorded By: FES
Book- Page- 0000



Golden Gryphon USA Inc.
1400 Tanager Place RR21, Roberts Creek, BC V0N 2W1
Phoenix 937-938,945-946 Lode Claims
T.27N.,R.52&53E.; Eureka County, Nevada

369 5th STREET
BLK O, NY 80801
PH: (773) 778-0688 FAX: (773) 778-0887

DATE: August 2013
DRAWN BY: [illegible]
CHECKED BY: [illegible]
SCALE: [illegible]