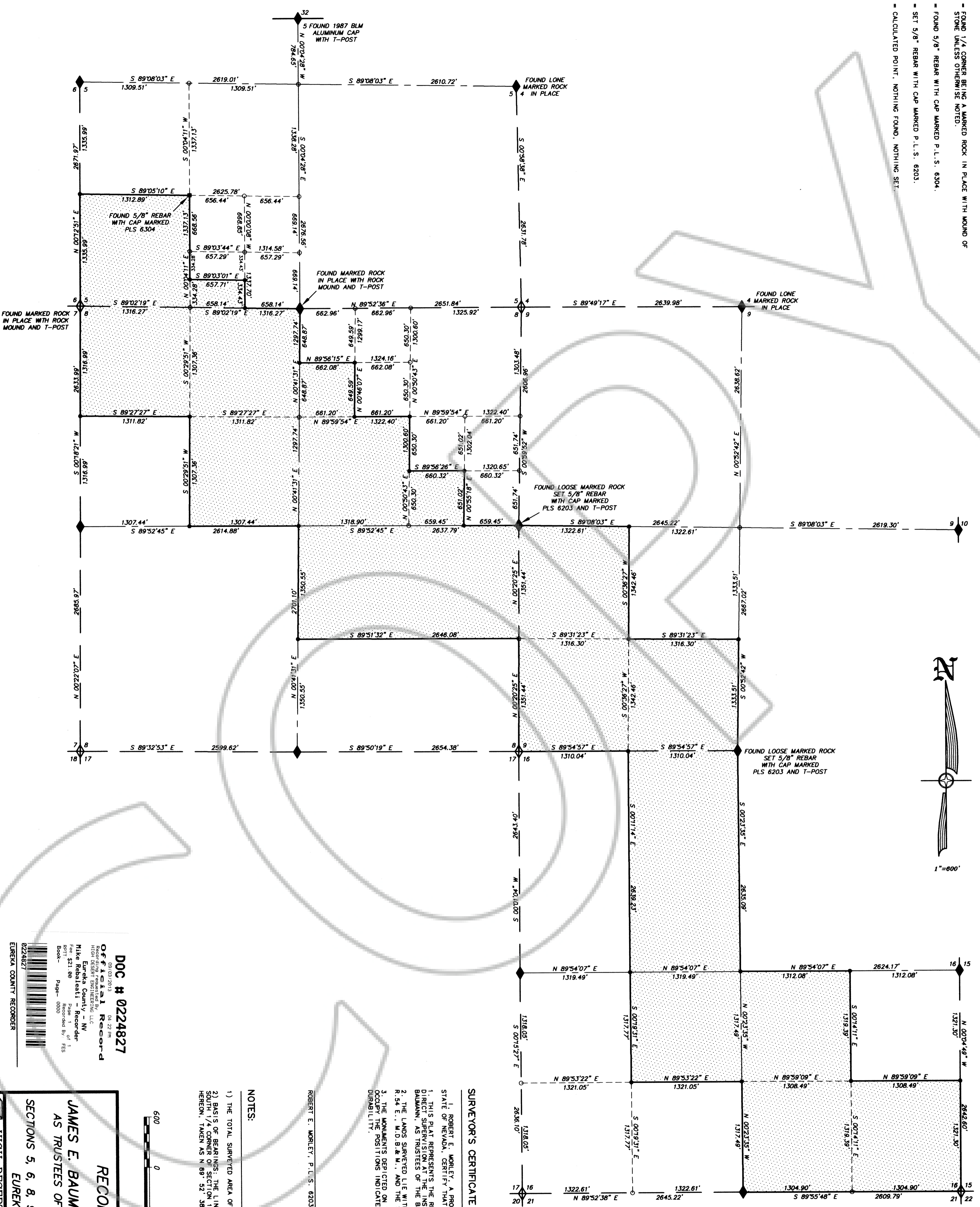
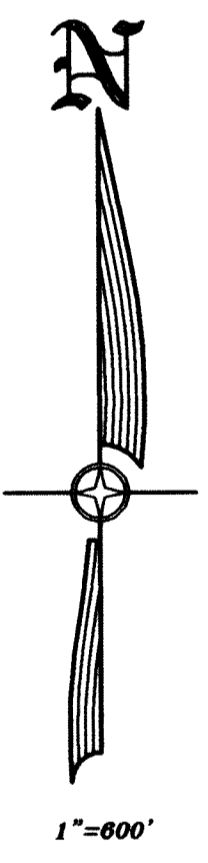


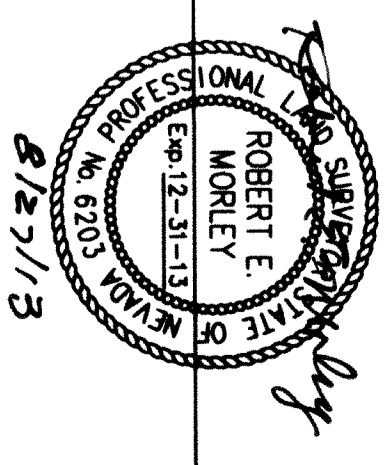
**LEGEND**

- ◇ = FOUND SECTION CORNER BEING A MARKED ROCK IN PLACE WITH MOUND OF STONE UNLESS OTHERWISE NOTED.
- ◆ = FOUND 1/4 CORNER BEING A MARKED ROCK IN PLACE WITH MOUND OF STONE UNLESS OTHERWISE NOTED.
- = FOUND 5/8" REBAR WITH CAP MARKED P.L.S. 6304.
- = SET 5/8" REBAR WITH CAP MARKED P.L.S. 6203.
- = CALCULATED POINT, NOTHING FOUND, NOTHING SET.



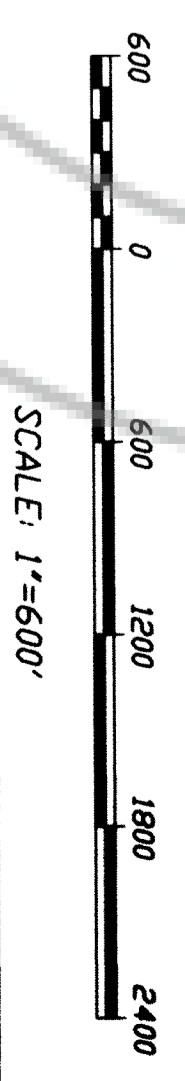
**SURVEYOR'S CERTIFICATE**

I, ROBERT E. WORLEY, A PROFESSIONAL LAND SURVEYOR LICENSED IN THE STATE OF NEVADA, CERTIFY THAT:  
 1. THIS PLAT REPRESENTS THE RESULTS OF A SURVEY CONDUCTED UNDER MY DIRECT SUPERVISION AT THE INSTANCE OF JAMES E. BAUMANN AND VERA L. BAUMANN, AS TRUSTEES OF THE BAUMANN FAMILY TRUST.  
 2. THE LANDS SURVEYED LIE WITHIN SECTIONS 5, 6, 8, 9 AND 16, T.19 N., R.54 E., M.D.B. & M., AS SHOWN HEREON, TAKEN AS N 89° 52' 38" E.  
 3. THE MONUMENTS DEPICTED ON THE PLAT ARE OF THE CHARACTER SHOWN, AND OCCUR IN THE POSITIONS INDICATED AND ARE OF SUFFICIENT NUMBER AND DURABILITY.



**NOTES:**

- 1) THE TOTAL SURVEYED AREA OF THIS MAP EQUALS 664.538 ACRES.
- 2) BASIS OF BEARINGS: THE LINE BETWEEN THE FOUND SOUTHWEST CORNER AND SOUTH 1/4 CORNER OF SECTION 16, T.19 N., R.54 E., M.D.B. & M., AS SHOWN HEREON, TAKEN AS N 89° 52' 38" E.



**RECORD OF SURVEY**

FOR  
**JAMES E. BAUMANN & VERA L. BAUMANN**  
 AS TRUSTEES OF THE BAUMANN FAMILY TRUST  
 IN  
 SECTIONS 5, 6, 8, 9 & 16, T.19N., R.54E., M.D.B. & M.  
 EUREKA COUNTY, NEVADA

**HIGH DESERT ENGINEERING, E.K.O. NEVADA 89801**  
 640 DAHO STREET  
 (775) 798-4053  
**213051**

**DOC H 0224827**  
 Official Record  
 Eureka County - NV  
 Mike Robatek - Recorder  
 Page 1 of 1  
 Book 0000 Page 0000  
 EUREKA COUNTY RECORDER