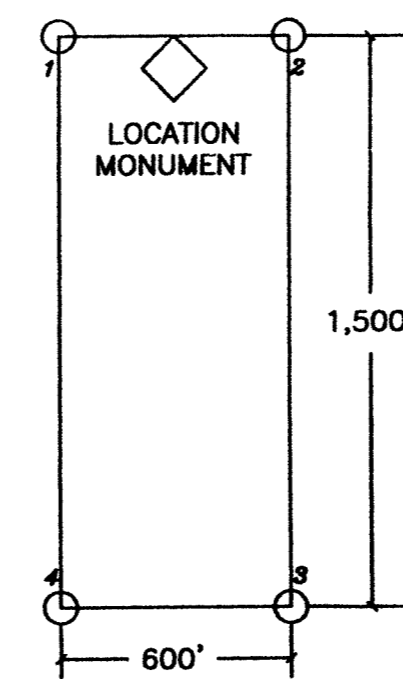
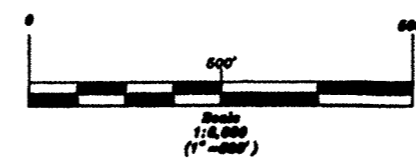


EXPLANATION

- ◊ Claim Location Monument
4' 2x2 Wooden Post located
20' inside of claim from
midpoint between corners or
as otherwise noted.
- Claim Corner Monument
4' 2x2 Wooden Post
- Projected Section Line
- ◄ Survey Corner Monument
Projected from USGS
Topographic Map

NOTES:

- Claims are oriented North/South
- The NE corner of claim 52 is located
Approximately 8,000' West of the NE
Corner of Sec. 32, T19N, R53E
- Claim Location Dates: June 6, 2013



TYPICAL LODGE MINING CLAIM
ALL CLAIMS ARE 1500' x 600'

T. 19 N.
T. 18 N.

Asset #27 Lode Mining Claims		
Asset #27 Claim Map of 2 Lode Mining Claims Claim #'s 27-52 & 53 Section 30, & 31, T19N, R53E MDBM Eureka County, Nevada CJT Mining, Inc. , P.O. Box 491, West Jordan, UT 84084		
Drawn By DMFA Maps 2013	Date File 8.10.13 #27	Aug. 2013