

R.53E.

T.27N.

T.26N.

838
EXISTING PHOENIX CLAIM

839

837

835

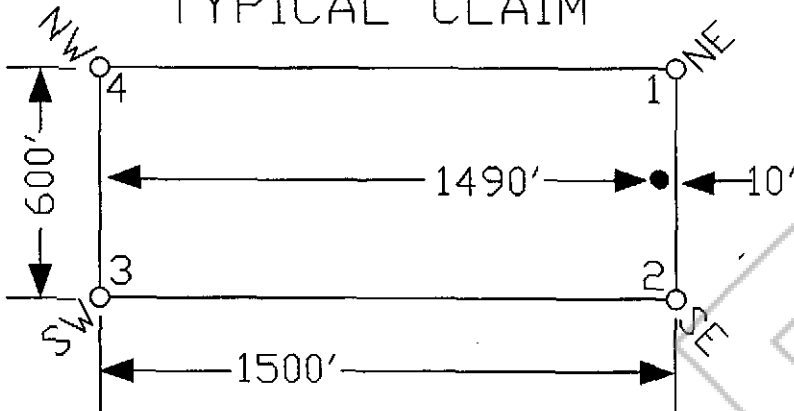
833

831

1141

1142

TYPICAL CLAIM



5

73 Ft.

4

NOTES:
LOCATION MONUMENTS SET 10' FROM CLAIM END CENTERLINES
UNLESS NOTED ON MAP. ALL LOCATION MONUMENTS AND CLAIM
POSTS ARE 2"x2"x4' WOODEN STAKES.

DASHED SECTION LINES INDICATE PROJECTED SECTIONS.

DOC # 0225394

12/03/2013 01:57 PM

Official Record

Recording requested by
CARLIN TREND MINING SERVICES

Eureka County - NV

Mike Rebaleati - Recorder

Fee: \$124.00

Page 1 of

RPTT:

Recorded By: LLH

Book-

Page- 0000

LOCATION DATES:

September 7, 2013 - Phoenix 831,833,835,837,
839,841,843,1141,1142

(9 Total Claims)

Elko County
Eureka County



0225394

MINING SERVICES
CarlinTrend
Survey & Mining Claims

369 - 5th STREET
ELKO, NV 89601 FAX: (775) 778-6877

Golden Gryphon USA, Inc.
1400 Tanager Place RR21, Roberts Creek, BC V0N 2W1
Phoenix Lode Claims
T.26&27N., R.53E.; Eureka County, Nevada

DATE: December 2013