

14,218 FEET EAST AND 3,343 FEET SOUTH OF THE SOUTHWEST SURVEYED CORNER OF SECTION 14, T.26N., R.52E., M.D.B.M.

1123

1124

1125

1126

1127

1128

19 20
30 29

LOCATION DATES:
September 7, 2013 - Phoenix 1123-1128
(6 Total Claims)

DOC # 0225401

12/03/2013 02:14 PM

Official Record

Recording requested By
CARLIN TREND MINING SERVICES

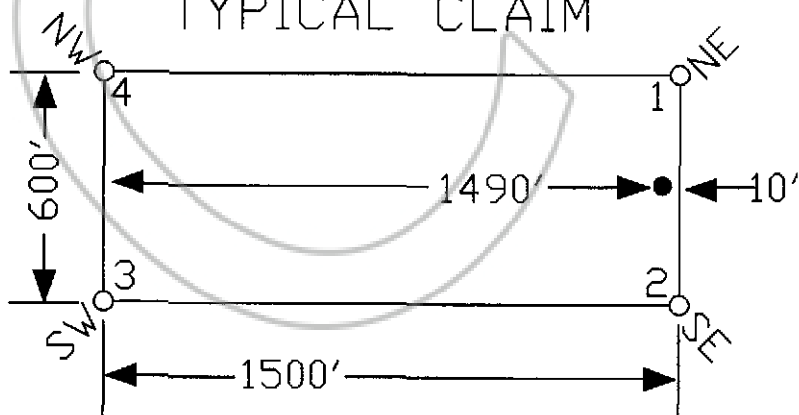
Eureka County - NV
Mike Rebaleati - Recorder

Fee: \$94.00 Page 1 of
RPTT: Recorded By: LLH
Book- Page- 0000



0225401

TYPICAL CLAIM



Golden Gryphon USA, Inc.
1400 Tanager Place RR21, Roberts Creek, BC V0N 2W1
Phoenix 1123-1128 Lode Claims
T.26N., R.53E.; Eureka County, Nevada

369 - 5th STREET DATE: December 2013
RUEVA NV 89001 FAX: 775/778-0007
RECORDING FEE: \$94.00
BOOK: 0000 PAGE: 0000