

36

R48E

R49E

31

T28N

T27N

1

R48E R49E

12

MTB 241	MTB 242	T28N MTB 273	MTB 274	MTB 305
MTB 243	MTB 244	MTB 275	MTB 276	MTB 307
MTB 245	MTB 246	MTB 277	MTB 278	MTB 309
MTB 247	MTB 248	MTB 279	MTB 280	MTB 311
MTB 249	MTB 250	MTB 281	MTB 282	MTB 313
MTB 251	MTB 252	MTB 283	MTB 284	MTB 315
MTB 253	MTB 254	MTB 285	MTB 286	MTB 317
MTB 255	MTB 256	MTB 287	MTB 288	MTB 319
MTB 257	MTB 258	MTB 289	MTB 290	MTB 321
MTB 259	MTB 260	MTB 291	MTB 292	MTB 323
MTB 261	MTB 262	MTB 293	MTB 294	MTB 325
MTB 263	MTB 264	MTB 295	MTB 296	MTB 327
MTB 265	MTB 266	MTB 297	MTB 298	MTB 329
MTB 267	MTB 268	MTB 299	MTB 300	MTB 331
MTB 269	MTB 270	MTB 301	MTB 302	750' MTB 3
MTB 271	MTB 272	MTB 303	MTB 304	750' MTB 3

750' MTB 3

750' MTB 3

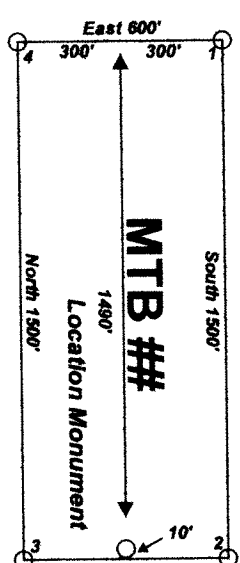
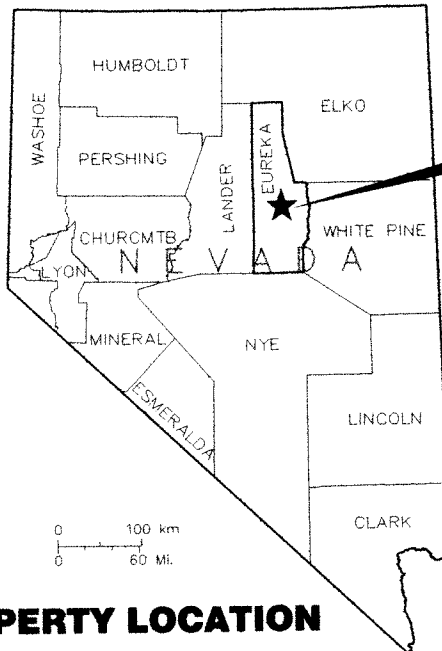
750' MTB 3

750' MTB 3

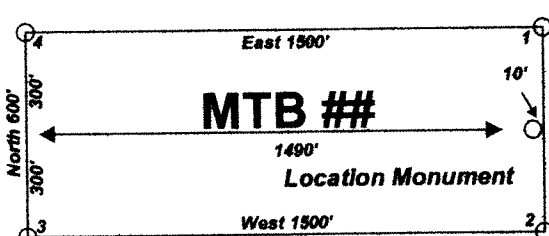
Sheet 1 of 3
Sheet 3 of 3

MTB lode claims 241-272 & 283-304 were located on October 26, 2013 and MTB lode claims 273-282, 305-340, 393-404, 422-441 were located on October 27, 2013 and MTB lode claims 341-370 were located on October 28, 2013 and MTB lode claims 371-392 & 405-421 were located on October 31, 2013 in Sections 7-10, 15-18, 20, 29, 32 Township 27 North Range 49 East and in Sections 36 Township 28 North Range 48 East and in Sections 31-34 Township 28 North Range 49 East in Eureka County, Nevada

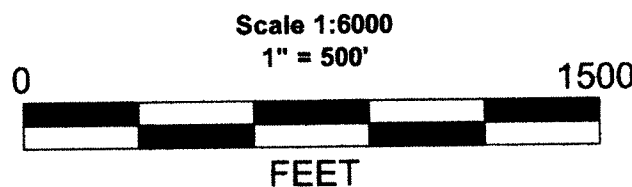
Location Map for
MTB 241-441 Lode Claims
Sheet 1 of 3



Typical Claim



Notes:
Location Monuments are set 10' from claim end lines unless noted otherwise. All location and corner monuments are 2" X 2" X 4' wooden posts with scribed metal tags. All claims are 600' by 1500' unless noted otherwise.



Location Map for MTB 241-441 Lode Claims Sheet 1 of 3
Barrick Gold US Inc. 460 W. 50 North, Suite 500 Salt Lake City, UT 84101
MTB_241-441_Claims-N27Z11FLdwg November 14, 2013 Drawn By: G.I.S. Land Services Surveyed By: T&T Exploration L.L.C. Datum: 1927 Projection: UTM Zone 11 Units: Feet

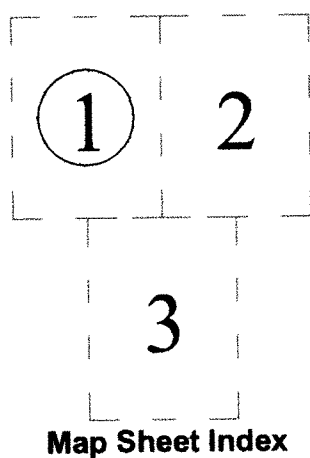
DOC # 0226850

Official Record
Recording requested by
BARRICK GOLD US INC.
Eureka County - NV
Mike Rebaletti - Recorder
Fee \$3,019.00 Page 1 of 1
Book- Page- 0000



0226850

Locator:
Barrick Gold US Inc.
460 W. 50 North, Suite 500
Salt Lake City, UT 84101



PROPERTY LOCATION

Sheet 1 of 3
Sheet 2 of 3

32

33

The NW Corner of MTB 306
bears S8°05'E and is 15,298'
from the NW corner of
Section 20 T28N R49E

05	MTB 306	MTB 341	MTB 342	MTB 371	MTB 372	MTB 405
07	MTB 308	MTB 343	MTB 344	MTB 373	MTB 374	MTB 406
09	MTB 310	MTB 345	MTB 346	MTB 375	MTB 376	MTB 407
1	MTB 312	MTB 347	MTB 348	MTB 377	MTB 378	MTB 408
3	MTB 314	MTB 349	MTB 350	MTB 379	MTB 380	MTB 409
5	MTB 316	MTB 351	MTB 352	MTB 381	MTB 382	MTB 410
7	MTB 318	MTB 353	MTB 354	MTB 383	MTB 384	MTB 411
9	MTB 320	MTB 355	MTB 356	MTB 385	MTB 386	MTB 412
11	MTB 322	MTB 357	MTB 358	MTB 387	MTB 388	MTB 413
13	MTB 324	MTB 359	MTB 360	MTB 389	MTB 390	MTB 414
15	MTB 326	MTB 361	MTB 362	MTB 391	MTB 392	MTB 415
17	MTB 328	MTB 363	MTB 364	MTB 393	MTB 394	MTB 416
19	MTB 330	MTB 365	MTB 366	MTB 395	MTB 396	MTB 417
21	MTB 332	MTB 367	MTB 368	MTB 397	MTB 398	MTB 418
23	MTB 334	MTB 369	MTB 370	MTB 399	MTB 400	MTB 419
25	MTB 336			MTB 401	MTB 402	MTB 420
27	MTB 337			MTB 403	MTB 404	MTB 421
29	MTB 338					
31	MTB 339					

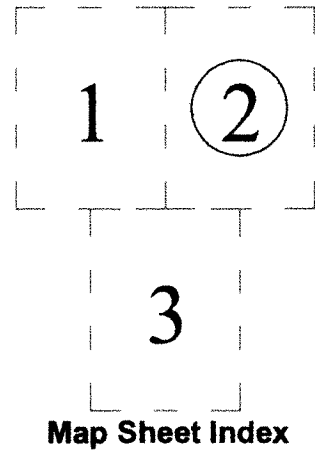
10

15

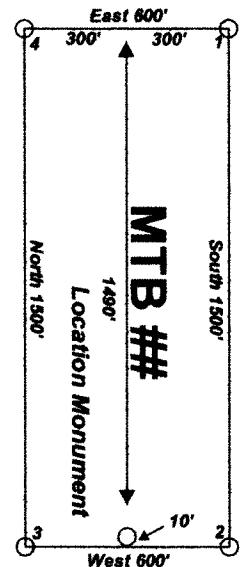
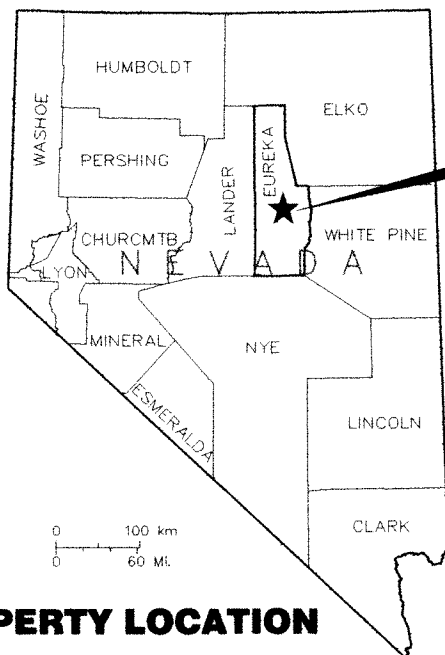
Sheet 2 of 3
Sheet 3 of 3

MTB lode claims 241-272 & 283-304 were located on October 26, 2013 and
MTB lode claims 273-282, 305-340, 393-404, 422-441 were located on October 27, 2013 and
MTB lode claims 341-370 were located on October 28, 2013 and
MTB lode claims 371-392 & 405-421 were located on October 31, 2013 in
Sections 7-10, 15-18, 20, 29, 32 Township 27 North Range 49 East and in
Sections 36 Township 28 North Range 48 East and in
Sections 31-34 Township 28 North Range 49 East in
Eureka County, Nevada

Locator:
Barrick Gold US Inc.
460 W. 50 North, Suite 500
Salt Lake City, UT 84101

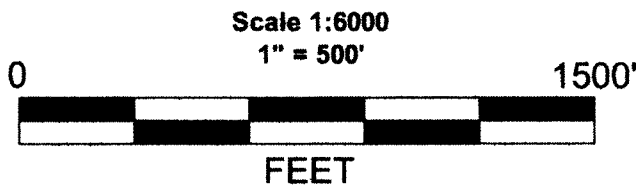
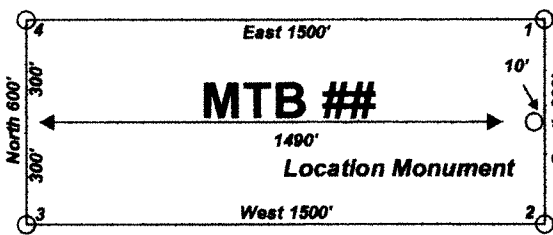


PROPERTY LOCATION



Typical Claim

Notes:
Location Monuments are set 10' from
claim end lines unless noted otherwise.
All location and corner monuments are
2" X 2" X 4" wooden posts with scribed
metal tags. All claims are 600' by 1500'
unless noted otherwise.



Location Map for MTB 241-441 Lode Claims Sheet 1 of 3
Barrick Gold US Inc. 460 W. 50 North, Suite 500 Salt Lake City, UT 84101
MTB_241-441_Claims-N27Z11Ft.dwg November 14, 2013 Drawn By: G.I.S. Land Services Surveyed By: T&T Exploration L.L.C. Datum: 1927 Projection: UTM Zone 11 Units: Feet

DOC # 0226850
Official Record
Eureka County - NV
Mike Rebaletti - Recorder
Fee: \$3,019.00 Page 1 of 1
Recorded By: AP
Book: 0000

19

20

21

30

29

28

31

32

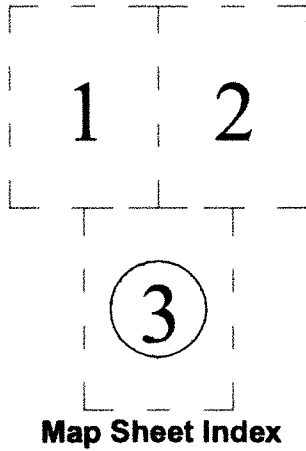
33

T27N

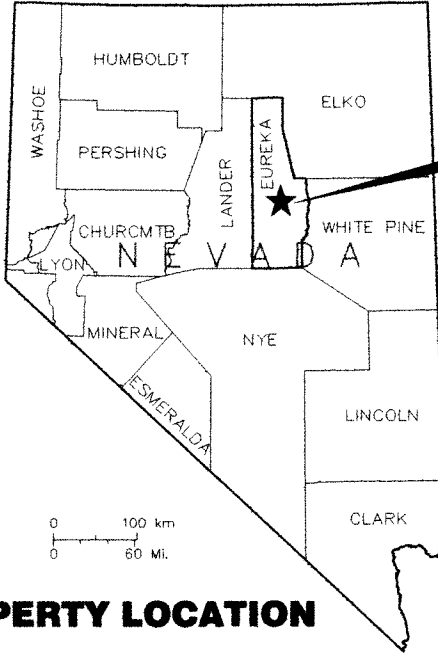
T26N

MTB lode claims 241-272 & 283-304 were located on October 26, 2013 and MTB lode claims 273-282, 305-340, 393-404, 422-441 were located on October 27, 2013 and MTB lode claims 341-370 were located on October 28, 2013 and MTB lode claims 371-392 & 405-421 were located on October 31, 2013 in Sections 7-10, 15-18, 20, 29, 32 Township 27 North Range 49 East and in Sections 36 Township 28 North Range 48 East and in Sections 31-34 Township 28 North Range 49 East in Eureka County, Nevada

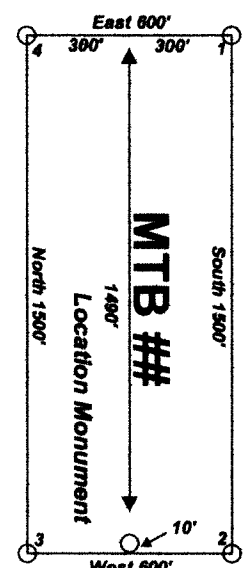
Locator:
Barrick Gold US Inc.
460 W. 50 North, Suite 500
Salt Lake City, UT 84101



PROPERTY LOCATION

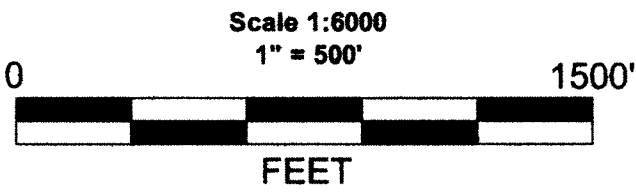
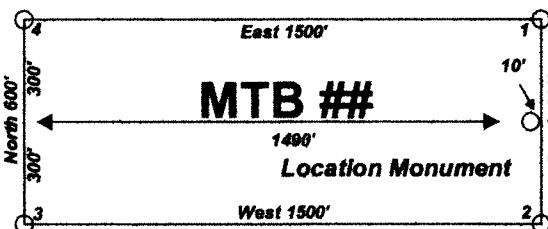


Location Map for MTB 241-441 Lode Claims Sheet 3 of 3



Typical Claim

Notes:
Location Monuments are set 10' from claim end lines unless noted otherwise. All location and corner monuments are 2" X 2" X 4" wooden posts with scribed metal tags. All claims are 600' by 1500' unless noted otherwise.



Location Map for MTB 241-441 Lode Claims Sheet 1 of 3
Barrick Gold US Inc. 460 W. 50 North, Suite 500 Salt Lake City, UT 84101
MTB_241-441_Claims-N27211FLdwg November 14, 2013 Drawn By: G.I.S. Land Services
Surveyed By: T&T Exploration L.L.C. Datum: 1927 Projection: UTM Zone 11 Units: Feet

DOC # 0226850
01/29/2014 10:01 AM
Official Record
Recording requested By:
BARRICK GOLD USA INC.
Eureka County - NV
Mike Rebaletti - Recorder
Fee: \$3,019.00 Page: 1 of 1
SOTT Recorded By: RP
Book- Page- 0000
6226850