

Location Map for

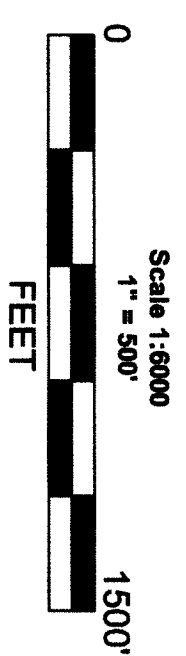
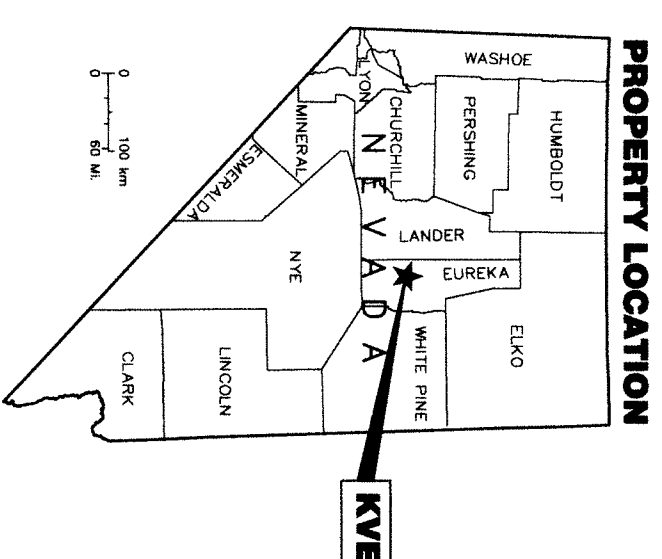
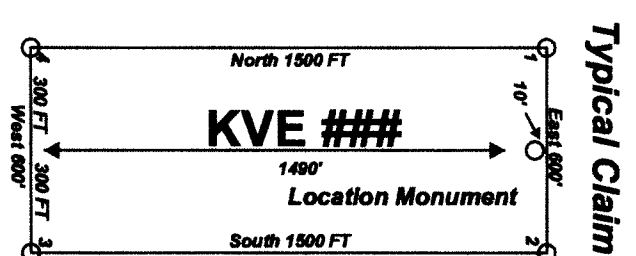
KVE 1-37

Lode Claims Sheet 1 of 1

"KVE" lode claims 28-37 were located on February 8, 2014 and "KVE" lode claims 13-27 were located on February 9, 2014 and "KVE" lode claims 1-12 were located on February 10, 2014 in Sections 3, 4, 9-10 & 15, Township 21 North, Range 51 East in Eureka County, Nevada

Locator:
Golden Pick LLC
7395 Meadow Wood Lane, Suite 3
Reno NV, 89502

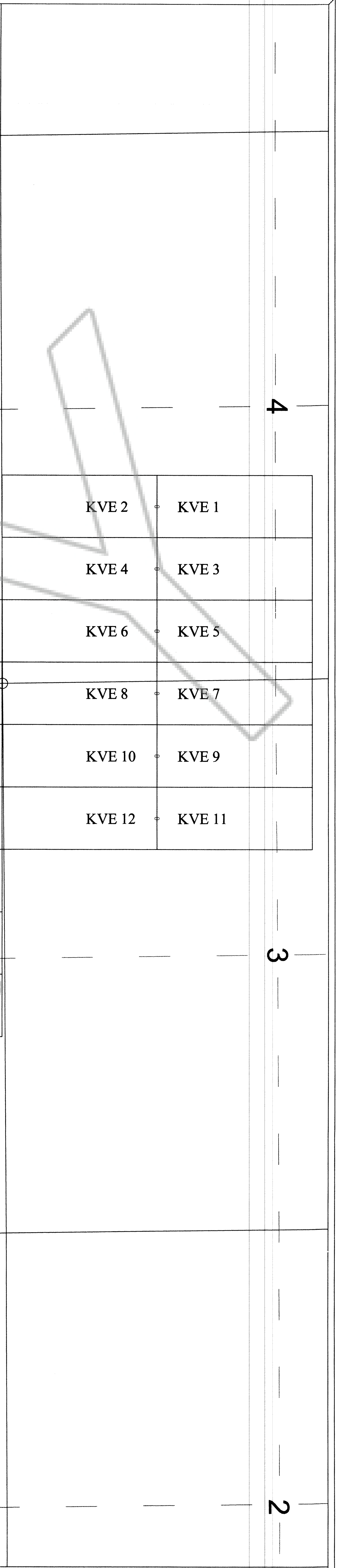
Notes:
Location Monuments are set 10' from claim end lines unless noted otherwise. All location and corner monuments are 2" X 2" X 4' wooden posts with scribed metal tags. All claims are 600' by 1500' unless noted otherwise.



Location Map for KVE 1-37
Lode Claims
Sheet 1 of 1
Golden Pick LLC
1595 Meadow Wood Lane, Suite 3
Reno NV, 89502
KVE 1-37 N27Z11R51E
February 18, 2014
Drawn By: GIS Land Services
Surveyed By: T&T Exploration
Datum: NAD 1983 Projection: UTM
Zone: 11 Units: Feet

DOC # 0227170

Office of the
County Recorder
Eureka County - NV
Mike Rebaletti - Recorder
Phone: 7559 60
Page: 1 of 1
Book: 0000
Recorded By: LLH
0227170



The SE Corner of KVE 37 bears N68°55'W and is 2134' from the NE corner of Section 15 T21N R51E

T21N R51E

16

15

14

9

10

11

4

3

2