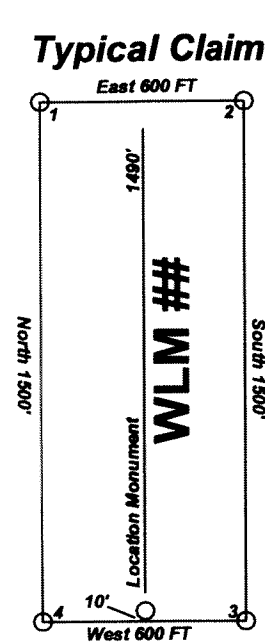
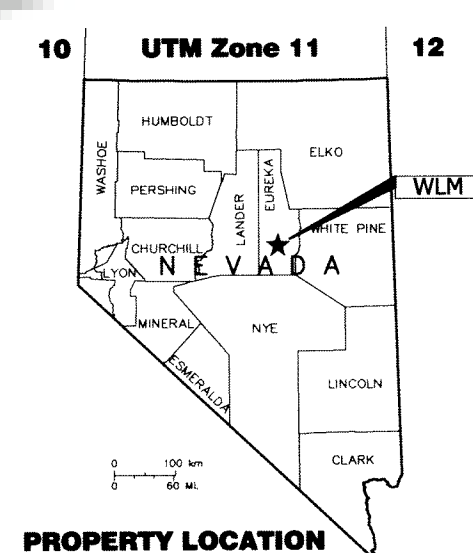


WLM lode claims 1-19 were located on June 30, 2014 in Township 20 North, Range 50 East, Section 12 and in Township 20 North, Range 51 East, Sections 7, 8 & 18 in Eureka County, Nevada, MDB&M.

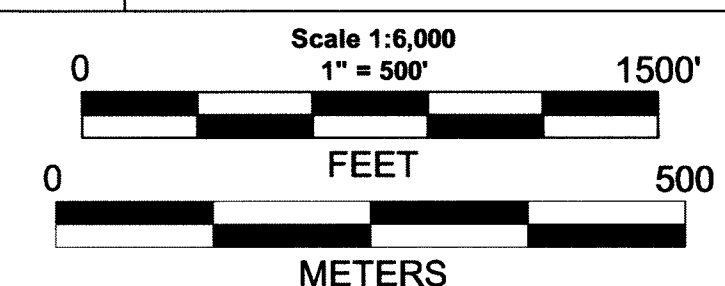
Locator;
Lone Mountain Zinc Ltd.
c/o Erwin and Thompson LLP
241 Ridge St., Suite 210
P.O. Box 40817
Reno, Nevada 89504



Notes:
Location Monuments are set 10' from claim end lines unless noted otherwise. All location and corner monuments are 2" X 2" X 4' wooden posts with scribed metal tags. All claims are 600' by 1500' unless noted otherwise.

Location Map for WLM 1-19 Lode Mining Claims Sheet 1 of 1

DOC # 0227803
09/10/2014 2:50 PM
Official Record
Eureka County - NV
Mike Rebaletti - Recorder
Fee: \$229.00 Page: 1 of 1
Book: 0011 Recorded By: 0000
6227803



Location Map for WLM 1-19
Lode Mining Claims
Sheet 1 of 1
Lone Mountain Zinc Ltd.
c/o Erwin and Thompson LLP
241 Ridge St., Suite 210
P.O. Box 40817
Reno, Nevada 89504
WLM_1-19_Claims_N63211m.dwg
September 1, 2014
Drawn By: G.I.S. Land Services
Datum: 1983; Projection: UTM;
Zone: 11; Units: Meters.