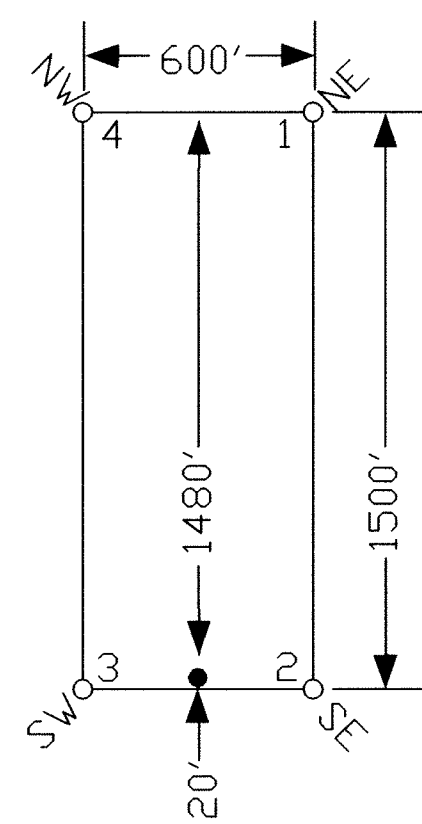
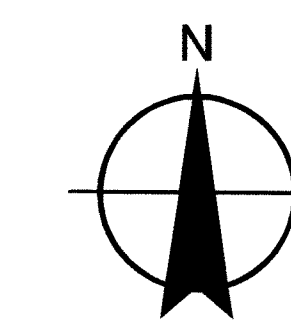


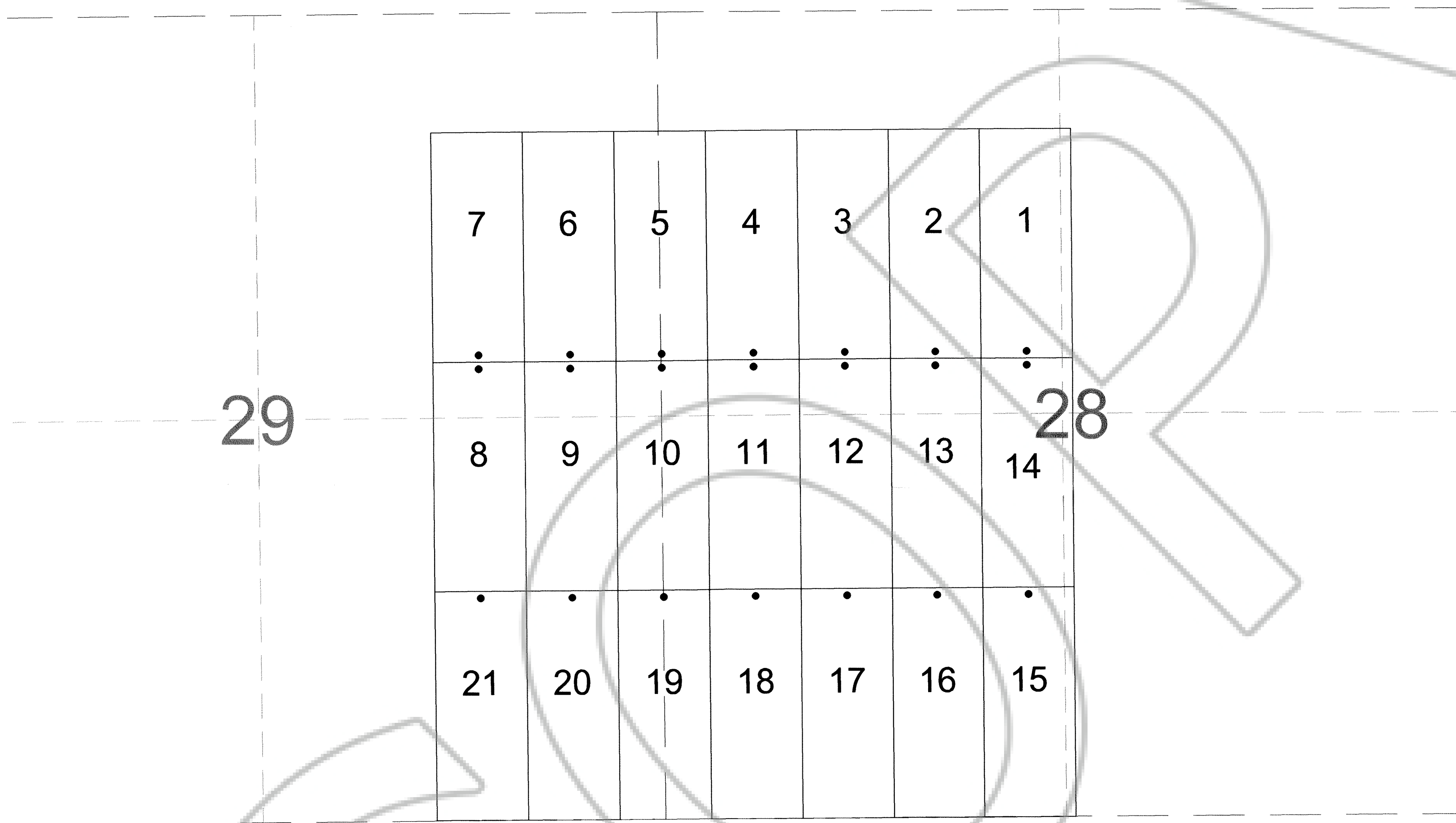
TYPICAL CLAIM



TIE POINT DATA:
 THE SOUTHWEST CORNER OF SDM #21 LIES APPROXIMATELY
 1500 FEET WEST AND 0 FEET NORTH/SOUTH OF THE NORTHEAST
 CORNER OF SECTION 32, T.19N., R.53E., M.D.B.M.



Scale 1" = 500'
 1:6000



LOCATION DATES:
 SEPTEMBER 6, 2014 - SDM # 1-21

NOTES:
 LOCATION MONUMENTS SET 20' FROM CLAIM END
 CENTERLINES. ALL LOCATION MONUMENTS AND CLAIM
 POSTS ARE 2"x2"x4' WOODEN STAKES.

DASHED SECTION LINES INDICATE PROJECTED SECTIONS.

DOC # 0227825
 09/11/2014 2:45 PM
Official Record
 Recording Requested By
 Eureka County - NV
 Mike Rebealeti - Recorder
 Fee: \$319.00 Page 1 of 1
 RPT: Recorded By:
 Book- Page- 0000

MINING SERVICES
Carl Frenn
 (Surveying + Staking + Surveys)
 369 - 5th STREET
 PH: (775) 778-0668 ELKO, NV 89801 FAX: (775) 778-0687

Locator:
 Sky Desert Mining Corporation
 4818 N. 94th Lane, Phoenix, Arizona 85037
 SDM #1-21 Lode Claims
 T.19N.,R.53.; Eureka County, Nevada

DATE: September 2014
 ACAD FILE NAME: C:\Users\mrb\Documents\sdm_0914.dwg
 PLOT SCALE: 1" = 500'
 DRAWN BY: smts