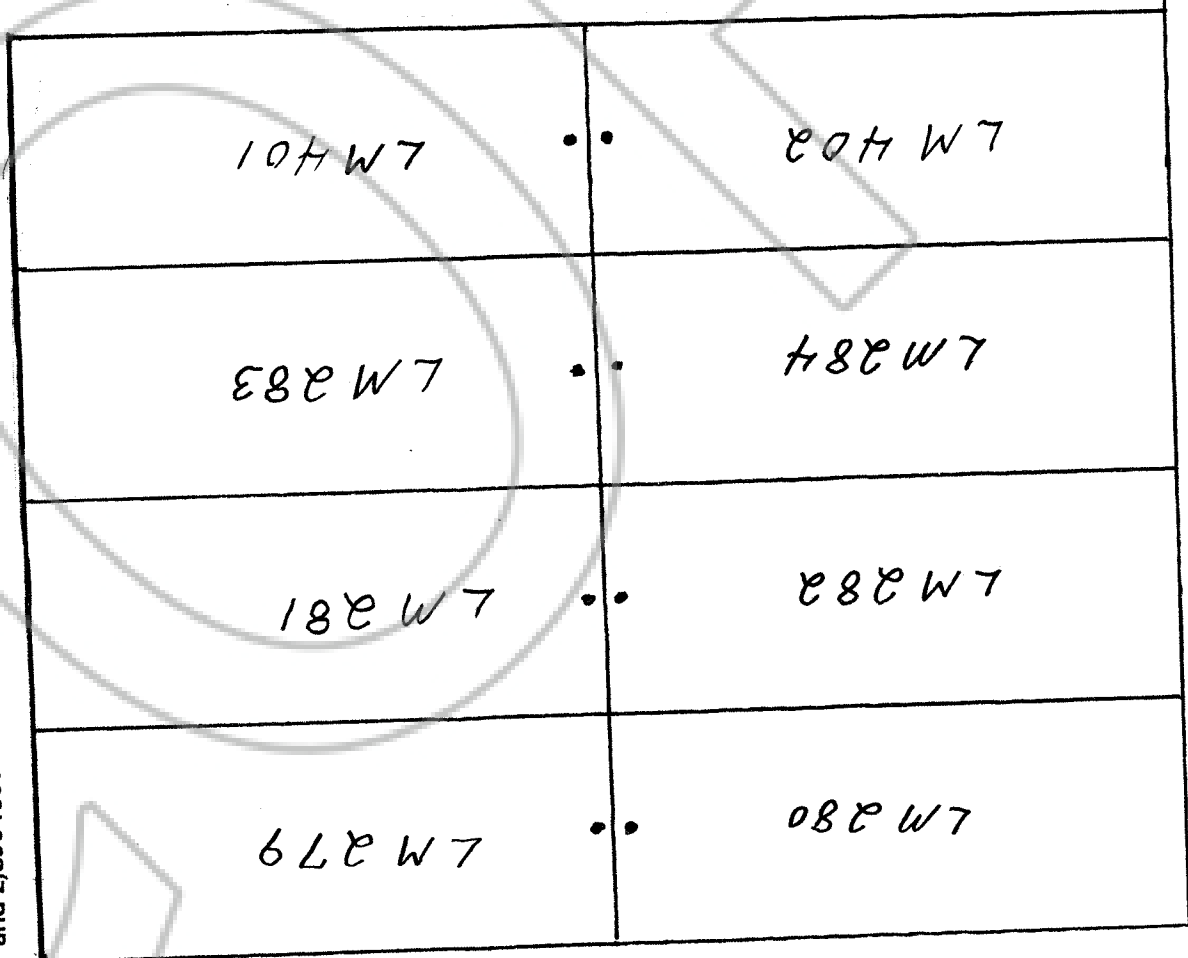
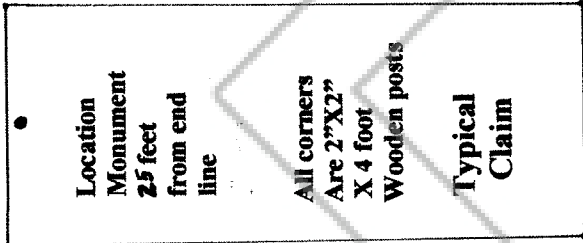


The southeast corner of S.31, T.21N., R.51E. is located N. 66 W. and 2,890 feet from the northeast corner of LM 279



NW corner

NE corner



All claims are 1500'X600' oriented North-South

SW corner

SE corner

1"=500'

MAP OF THE LM LODE CLAIMS
EUREKA COUNTY NEVADA
LOCATED SEPTEMBER 9, 2014

BY

BRAVO ALASKA INC.
4790 CAUGHLIN PARKWAY #207
RENO, NV 89519
775-846-3780

The claims are located in
S. 8; T.20N.; R.51E.

DOC # 0227971

10/27/2014 09:39 AM

Official Record

Recording requested By

Eureka County - NV
Mike Rebaletti - Recorder
Fee: \$124.00 Page 1 of
RPTT: Recorded By:
Book- Page- 0000



0227971

