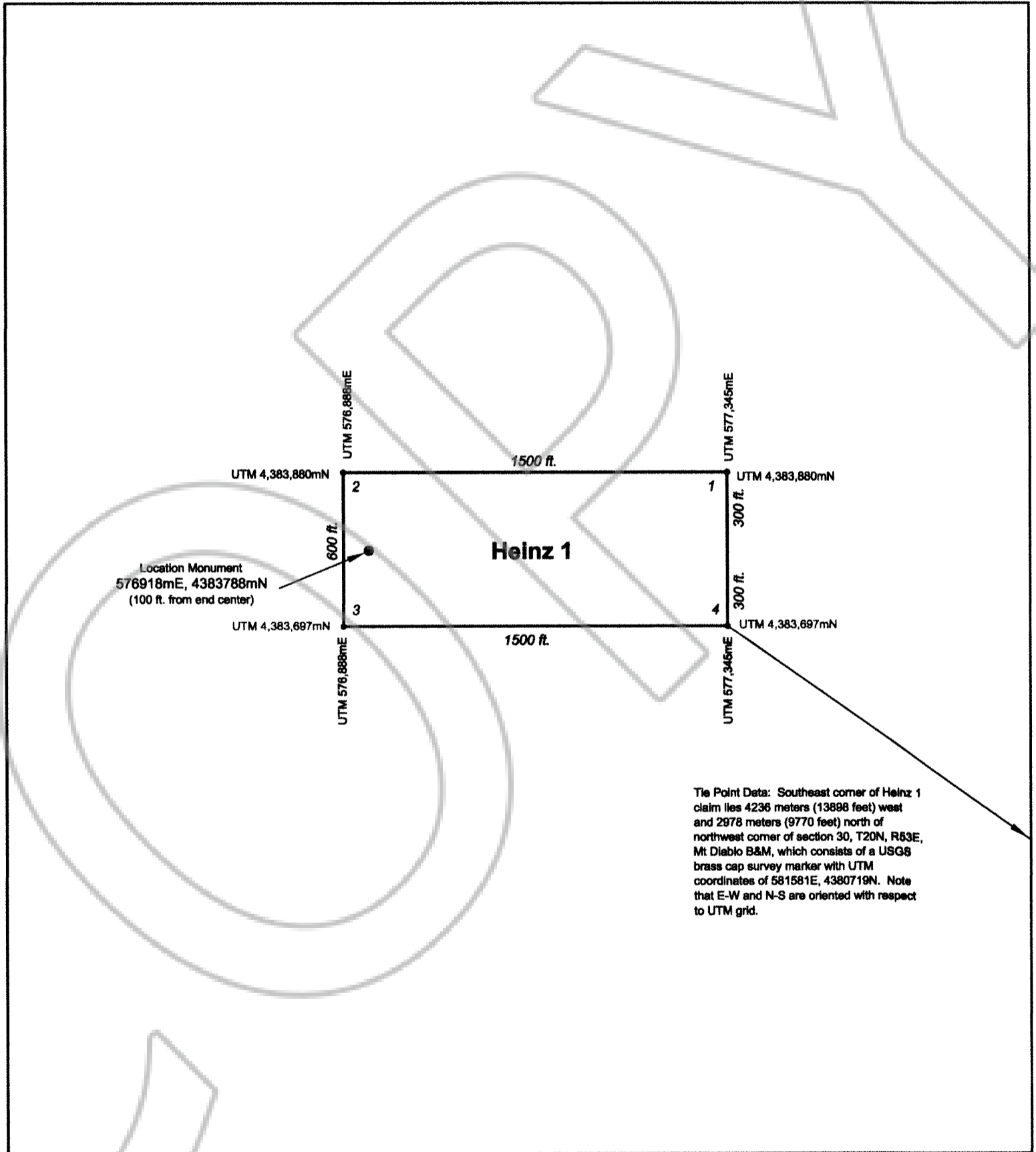
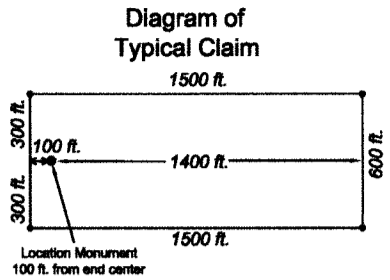


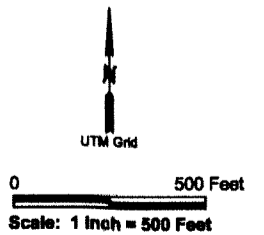
Eureka County - NV
Mike Rebaleati - Recorder
Fee: \$19.00 Page 1 of
RPTT: Recorded By:
Book- Page- 0000



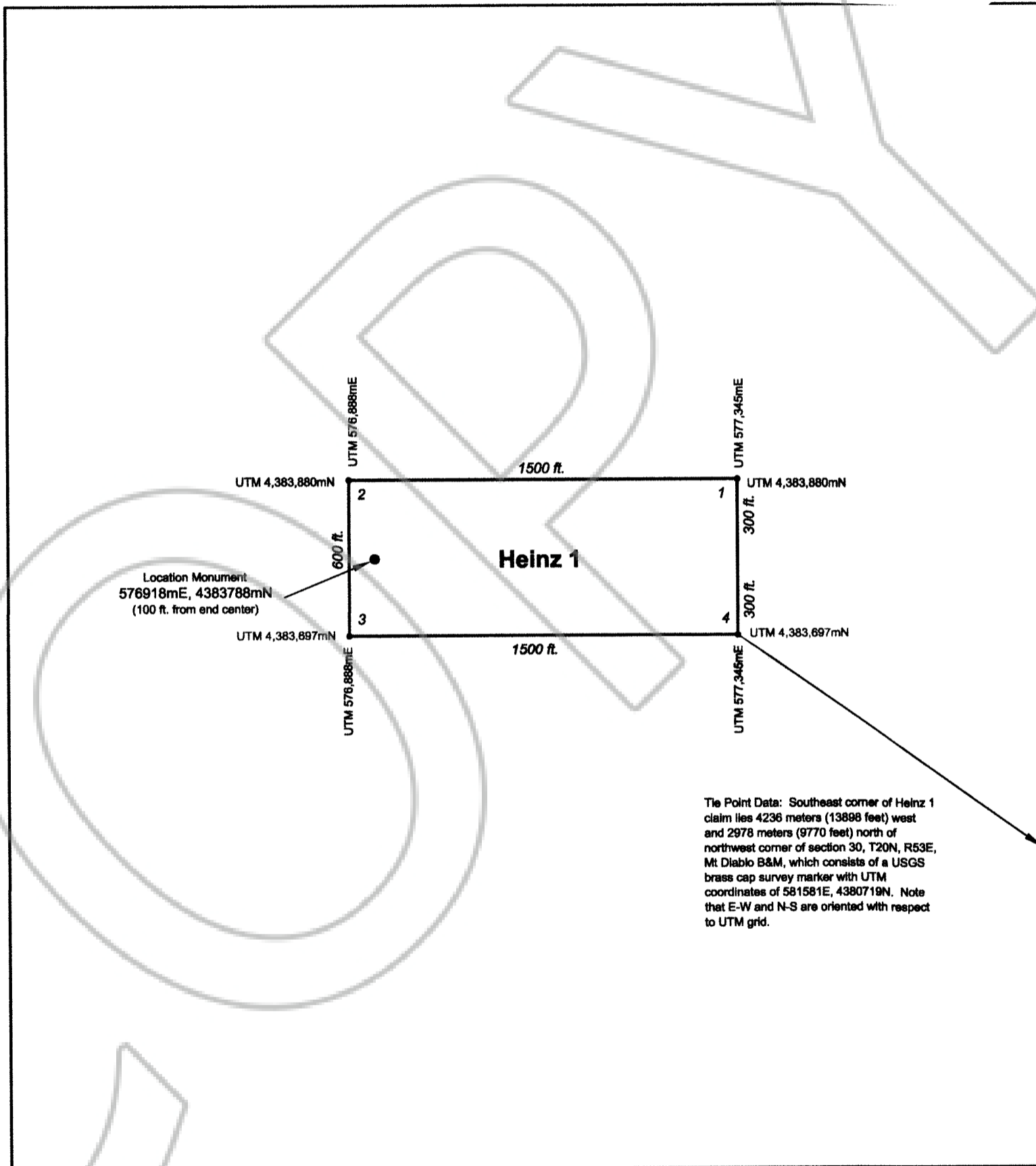
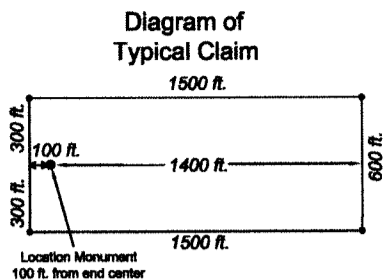
Located on September 30, 2014 By:
Nev Prospect, LLC
1490 Star Way
Reno, Nevada 89511

Devon Peak, Nevada 7.5' USGS Topo Quad
UTM NAD 1927 Zone 11S

**Claim Map of the Heinz 1
Lode Mining Claim
T20N, R52E Section 15
Mt. Diablo B&M
Eureka County, Nevada**



Eureka County - NV
Mike Rebaleati - Recorder
Fee: \$19.00 Page 1 of
RPTT: Recorded By
Book- Page- 0000



Located on September 30, 2014 By:
Nev Prospect, LLC
1490 Star Way
Reno, Nevada 89511

Devon Peak, Nevada 7.5' USGS Topo Quad
UTM NAD 1927 Zone 11S

Claim Map of the Heinz 1
Lode Mining Claim
T20N, R52E Section 15
Mt. Diablo B&M
Eureka County, Nevada



0 500 Feet
Scale: 1 Inch = 500 Feet