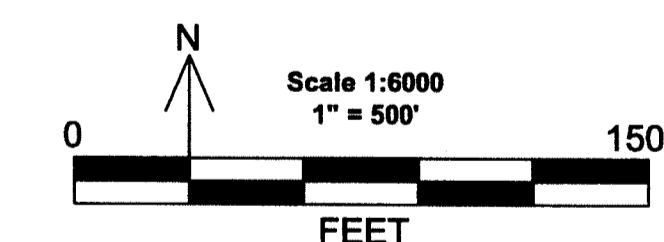
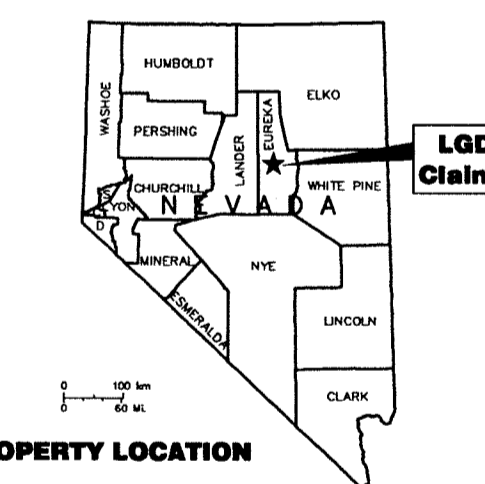
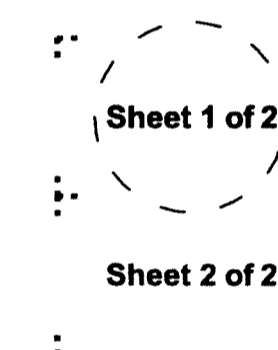
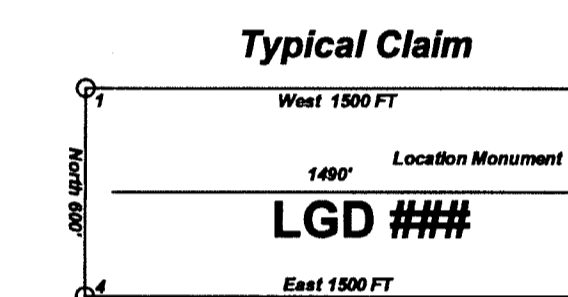


**Location Map for  
LGD 1-186  
Lode Mining Claims  
Sheet 1 of 2**

*Locator:  
Kinross Gold U.S.A., Inc.  
5075 South Syracuse St., 8th Floor  
Denver, CO. 80237*

LGD lode claims 18, 20 & 29-131 were located on September 1, 2014 and LGD lode claims 19, 21-28, & 132-186 were located on September 2, 2014 and LGD lode claims 1-17 were located on September 3, 2014 in Section 1, Township 23.5 North, Range 50 East and in Sections 5-6, Township 23 North, Range 51 East and in Sections 13-14, 22-27 & 35-36 Township 24 North, Range 50 East and in Sections 19, 30-31, Township 24 North, Range 51 East in Eureka County, Nevada.

**Notes:**  
Location Monuments are set 10' from claim end lines unless noted otherwise. All location and corner monuments are 2" X 2" X 4' wooden posts with scribed metal tags. All claims are 600' by 1500' unless noted otherwise.



LOCATION MAP for LGD 1-186  
Lode Mining Claims  
Sheet 1 of 2  
Kinross Gold U.S.A., Inc.  
5075 South Syracuse St., 8th Floor  
Denver, CO. 80237  
LGD\_1-186\_Claims\_N27Z11FL.dwg  
September 25, 2014  
Drawn By: T&T Exploration L.L.C.  
Located By: T&T Exploration L.L.C.  
Datum: 1927, Projection: UTM,  
Zone: 11, Units: Feet

DOC # 0228238  
11/18/2014 08:02 AM  
**Official Record**  
Recorded Pursuant to:  
KINROSS GOLD USA INC.  
Eureka County - NV  
Mike Rebaletti - Recorder  
Fee: \$2,798.00 Page 1 of 2  
RPTT Recorded By:  
Book- Page- 0000



		14		13		18	
					LGD 132		
					LGD 131	LGD 133	
				LGD 69	LGD 70	LGD 134	
			LGD 18	LGD 71	LGD 72	LGD 135	
			LGD 20	LGD 73	LGD 74	LGD 136	
	LGD 19						
	LGD 21	LGD 22		LGD 75	LGD 76	LGD 137	
	LGD 23	LGD 24		LGD 77	LGD 78	LGD 138	
	LGD 25	LGD 26		LGD 79	LGD 80	LGD 139	
	LGD 27	LGD 28		LGD 81	LGD 82	LGD 140	
22		23		24		19	
LGD 1	LGD 2	LGD 29	LGD 30	LGD 83	LGD 84	LGD 141	
LGD 3	LGD 4	LGD 31	LGD 32	LGD 85	LGD 86	LGD 142	
LGD 5	LGD 6	LGD 33	LGD 34	LGD 87	LGD 88	LGD 143	LGD 144
LGD 7	LGD 8	LGD 35	LGD 36	LGD 89	LGD 90	LGD 145	LGD 146
LGD 9	LGD 10	LGD 37	LGD 38	LGD 91	LGD 92	LGD 147	LGD 148
LGD 11	LGD 12	LGD 39	LGD 40	LGD 93	LGD 94	LGD 149	LGD 150
	LGD 13	LGD 41	LGD 42	LGD 95	LGD 96	LGD 151	LGD 152
	LGD 14	LGD 43	LGD 44	LGD 97	LGD 98	LGD 153	LGD 154
	LGD 15	LGD 45	LGD 46	LGD 99	LGD 100	LGD 155	LGD 156
	LGD 16	LGD 47	LGD 48	LGD 101	LGD 102	LGD 157	LGD 158
		26		25		30	

**T24N R50E**

The NW Corner of LGD 1 bears S60°58'E and is 5381' from the NW corner of Section 22 T24N R50E

**T24N R50E  
T24N R51E**

Sheet 1 of 2  
Sheet 2 of 2

27

26

25

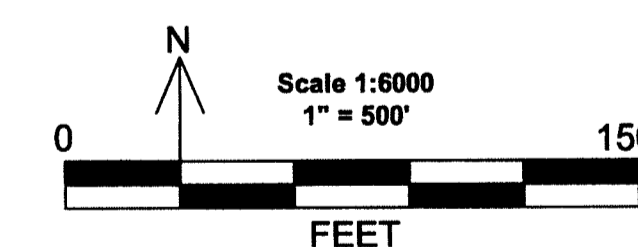
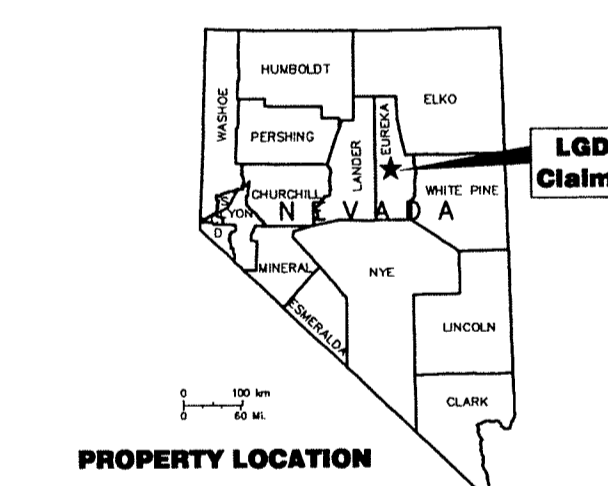
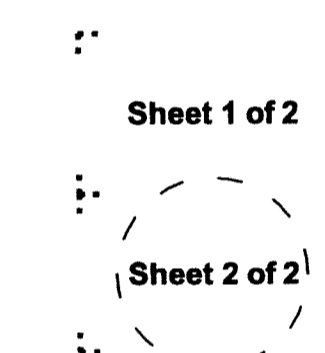
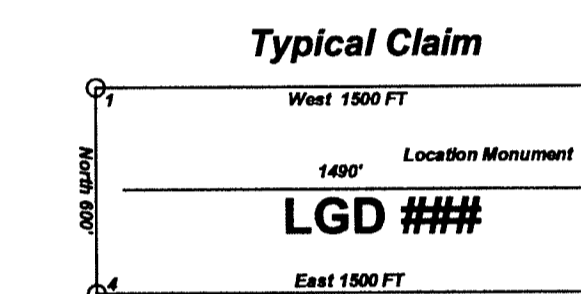
30

**Location Map for  
LGD 1-186  
Lode Mining Claims  
Sheet 2 of 2**

*Locator:  
Kinross Gold U.S.A., Inc.  
5075 South Syracuse St., 8th Floor  
Denver, CO 80237*

LGD lode claims 18, 20 & 29-131 were located on September 1, 2014 and LGD lode claims 19, 21-28, & 132-186 were located on September 2, 2014 and LGD lode claims 1-17 were located on September 3, 2014 in Section 1, Township 23.5 North, Range 50 East and in Sections 5-6, Township 23 North, Range 51 East and in Sections 13-14, 22-27 & 35-36 Township 24 North, Range 50 East and in Sections 19, 30-31, Township 24 North, Range 51 East in Eureka County, Nevada.

**Notes:**  
Location Monuments are set 10' from claim end lines unless noted otherwise. All location and corner monuments are 2" X 2" X 4' wooden posts with scribed metal tags. All claims are 600' by 1500' unless noted otherwise.



LOCATION MAP for LGD 1-186  
Lode Mining Claims  
Sheet 2 of 2  
*Kinross Gold U.S.A., Inc.  
5075 South Syracuse St., 8th Floor  
Denver, CO 80237*  
LGD\_1-186\_Claims\_N27Z11FLdwg  
September 25, 2014  
Drawn By: G.I.S. Land Services  
Located By: T&T Exploration L.L.C.  
Datum: 1927, Projection: UTM,  
Zone: 11, Units: Feet

DOC # 0228238  
11/18/2014 09:57 AM  
**Official Record**  
Recording requested by  
KINROSS GOLD U.S.A. INC.  
Eureka County - NV  
Mike Rebaletti - Recorder  
Fee: \$2,795.00 Page 2 of 2  
Book- Page- 0000



Sheet 1 of 2 Sheet 2 of 2	LGD 14	LGD 43	LGD 44	LGD 97	LGD 98	LGD 153	LGD 154
	LGD 15	LGD 45	LGD 46	LGD 99	LGD 100	LGD 155	LGD 156
	LGD 16	LGD 47	LGD 48	LGD 101	LGD 102	LGD 157	LGD 158
	LGD 17	LGD 49	LGD 50	LGD 103	LGD 104	LGD 159	LGD 160
The SW Corner of LGD 17 bears S33°58'E and is 11,106' from the NW corner of Section 22 T24N R50E	LGD 51	LGD 52	LGD 105	LGD 106	LGD 161	LGD 162	
	LGD 53	LGD 54	LGD 107	LGD 108	LGD 163	LGD 164	
	LGD 55	LGD 56	LGD 109	LGD 110	LGD 165	LGD 166	
	LGD 57	LGD 58	LGD 111	LGD 112	LGD 167	LGD 168	
	LGD 59	LGD 60	LGD 113	LGD 114	LGD 169	LGD 170	
	LGD 61	LGD 62	LGD 115	LGD 116	LGD 171	LGD 172	
	LGD 63	LGD 64	LGD 117	LGD 118	LGD 173	LGD 174	
	LGD 65	LGD 66	LGD 119	LGD 120	LGD 175	LGD 176	
	LGD 67	LGD 68	LGD 121	LGD 122	LGD 177	LGD 178	
		LGD 123	LGD 124	LGD 179	LGD 180		
	LGD 125	LGD 126	LGD 181	LGD 182			
	LGD 127	LGD 128	LGD 183	LGD 184			
	LGD 129	LGD 130	LGD 185	LGD 186			
	T24N R50E T23HN R50E		T24N R51E T23N R51E				

27

26

25

30

35

36

31

1

6

5