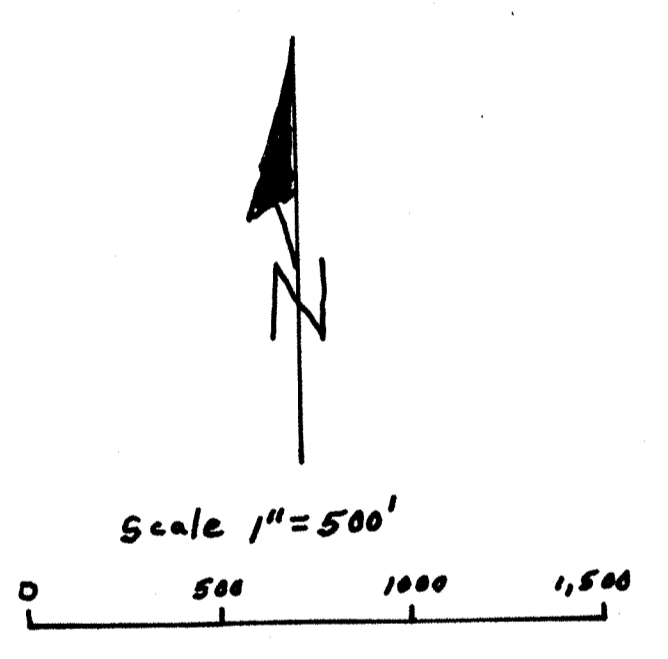
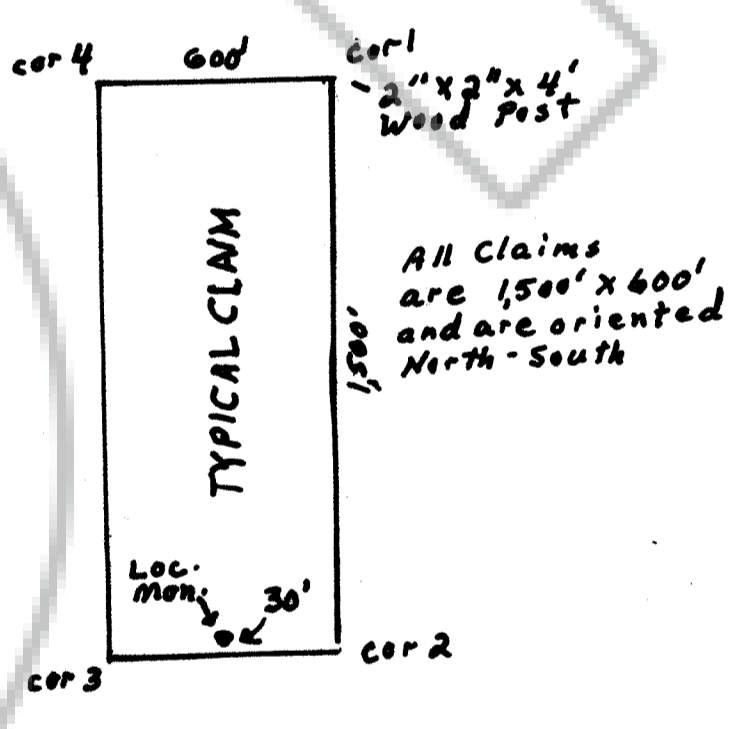


Location Dates

NOLM 48, 50, 52, 54, 56, 58, 60-81
 Located on Sept. 9, 2014

NOLM 25, 27, 28-47, 49, 51, 53, 55
 57, 59 Located on Sept 10, 2014



LOCATOR
 Bravo Alaska, Inc.
 4790 Caughlin Pkwy. #207
 Reno, Nevada 89519

Tie: The SE cor of NOLM 81 is 1073' south and 826' east of the SE cor of Sec 11, T21N R50E

Map of the NOLM Lode Mining Claims

T22N, R50E, S 35
 T21N, R50E, S. 1, 2, 15, 12, 13 and 14
 Eureka County Nevada