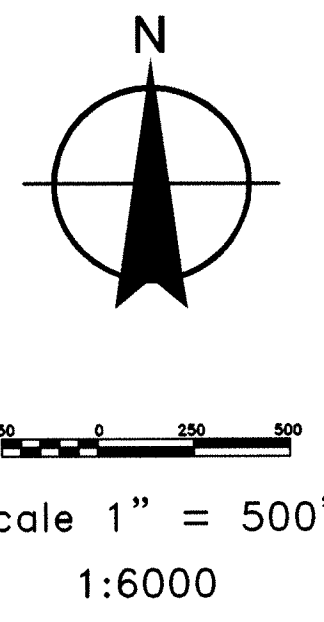
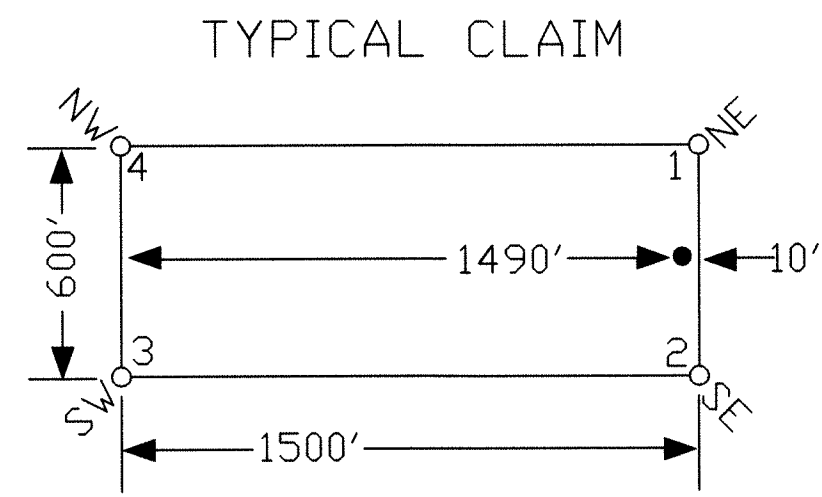


T.26N.,R53E.



7

8

EXISTING PHOENIX CLAIMS

194  
196  
198  
200  
202  
204  
206

213		214
215	••	216
217	••	218
219	••	220
221	••	222
223	••	224
225	••	226

TIE POINT DATA:  
THE NORTHEAST CORNER OF PHOENIX 216 LIES APPROXIMATELY 2,274 FEET EAST AND 9,042 FEET NORTH OF THE SURVEYED SOUTHWEST CORNER OF SECTION 17, T.26N., R.53E., M.D.B.M.

NOTES:  
LOCATION MONUMENTS SET 10' FROM CLAIM END CENTERLINES UNLESS NOTED ON MAP. ALL LOCATION MONUMENTS AND CLAIM POSTS ARE 2"x2"x4' WOODEN STAKES.

DASHED SECTION LINES INDICATE PROJECTED SECTIONS.

18

17

EXISTING PHOENIX CLAIMS

208  
210  
245  
247  
249  
251  
253  
255

227	••	228
229	••	230
246	••	259
248	••	260
250	••	261
252	••	262
254	••	263
256	••	264

LOCATION DATES:  
September 18, 2014 - Phoenix 215-230,246,248,250,252,254,258-264, 258,283,286,288,290,292,294,1129-1134

(41 Total Claims)

19

20

EXISTING PHOENIX CLAIMS

257  
267  
269  
271  
273  
275  
277  
1123  
1124  
1125  
1126  
1127  
1128

258	•
283	•
286	•
288	•
290	•
292	•
294	•
1129	•
1130	•
1131	•
1132	•
1133	•
1134	•

30

29

DOC # 0228947  
12/12/2014 02:09 PM  
Official Record  
Recording provided by:  
CARL IN TREND MINING SUPPLIES & SVCS  
Eureka County - NV  
Mike Reboleali - Recorder  
Fee: \$619.00 Page 1 of  
SP11 Recorded By:  
Book- Page- 0000



Locator:  
Golden Gryphon USA Inc.  
1400 Tanager Place RR21, Roberts Creek, BC V0N 2W1  
Phoenix Lode Claims  
T.26N.,R.53E.; Eureka County, Nevada