

644

645

996

646

22 23

998

648

27 26

649

T.27N.,R.52E.

660

661

NOTES:  
LOCATION MONUMENTS SET 10' FROM CLAIM END CENTERLINES UNLESS NOTED ON MAP. ALL LOCATION MONUMENTS AND CLAIM POSTS ARE 2"x2"x4' WOODEN STAKES.

662

663

DASHED SECTION LINES INDICATE PROJECTED SECTIONS.

TIE POINT DATA:  
THE NORTHEAST CORNER OF PHOENIX 996 LIES APPROXIMATELY 16 FEET EAST AND 4,638 FEET SOUTH OF THE SURVEYED NORTHWEST CORNER OF SECTION 23, T.27N., R.52E., M.D.B.M.

664

665

LOCATION DATES:  
September 18, 2014 - Phoenix 660, 662, 664, 719, 720, 996, 998

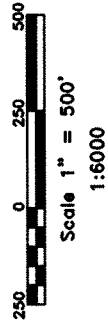
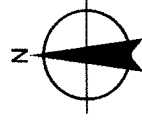
719

666

720

667

EXISTING PHOENIX CLAIMS



DOC # 0228955

Official Record  
12/12/2014 02:24 PM

Recording Requested By  
CARLIN TREND MINING SUPPLIES & SRVC

Eureka County - NV

Mike Rebaleati - Recorder

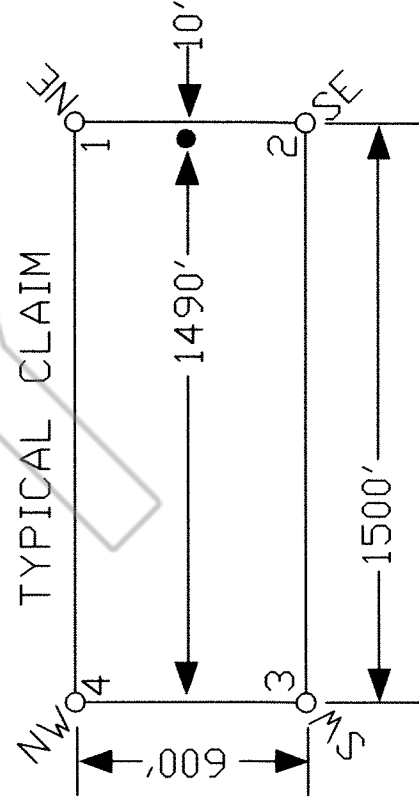
Fee: \$109.00 Page 1 of

RPTT: Recorded By:

Book- Page- 0000



0228955



369 - 5th STREET  
ELKO, NV 89601

PH: (775) 778-0668 FAX: (775) 778-0687

DATE:

December 2014

PHOENIX CLAIMS

1" = 500'

Golden Gryphon USA Inc.  
1400 Tanager Place RR21, Roberts Creek, BC V0N 2W1

Phoenix Lode Claims

T.27N.,R.52E.; Eureka County, Nevada