

DOC # 0229143

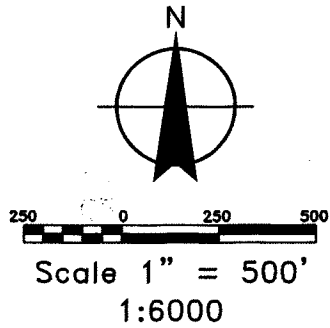
02/04/2015 01:05 PM

Official Record

Recording requested By
CARLIN TREND MINING SERVICES

Eureka County - NV
Sara Simmons - Recorder

Fee: \$49.00 Page 1 of
RPTT: Recorded By:
Book- Page- 0000

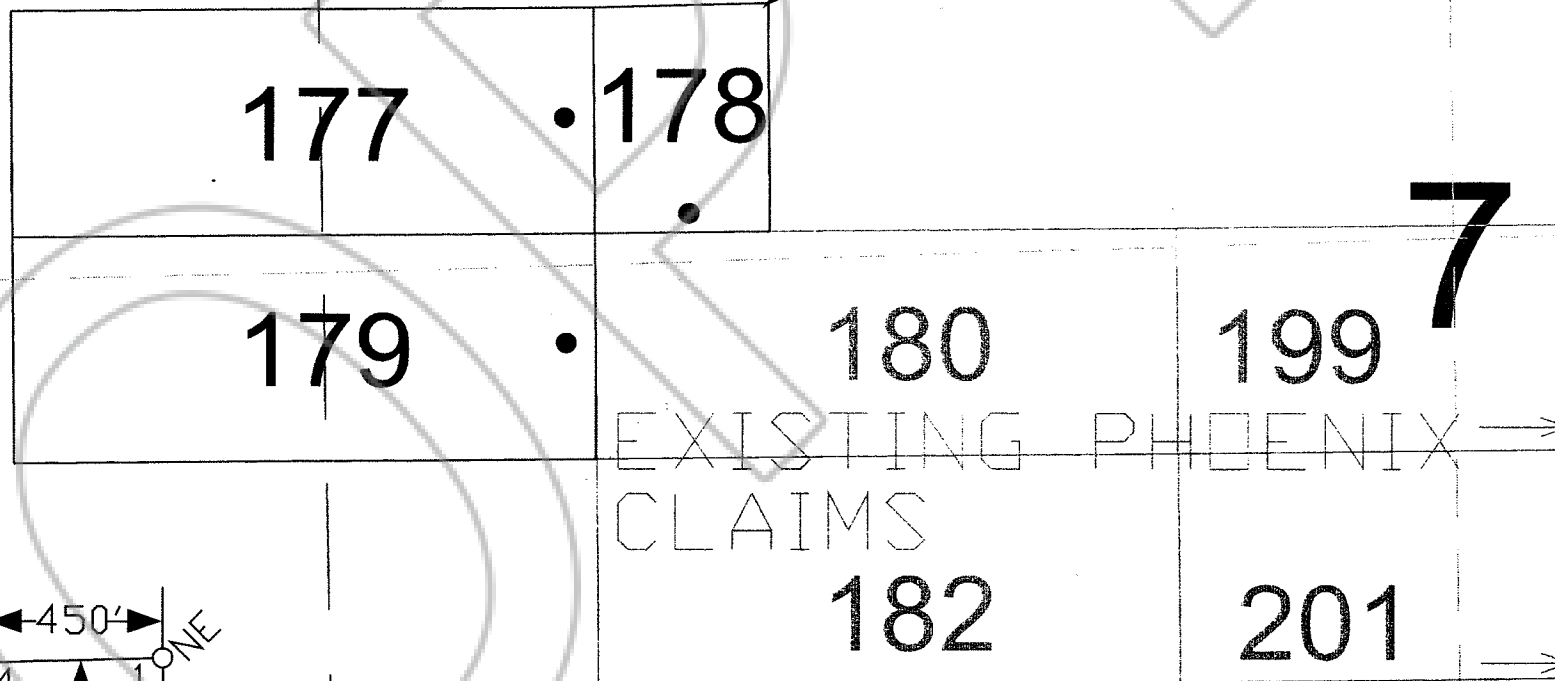


R.52E.
R.53E.

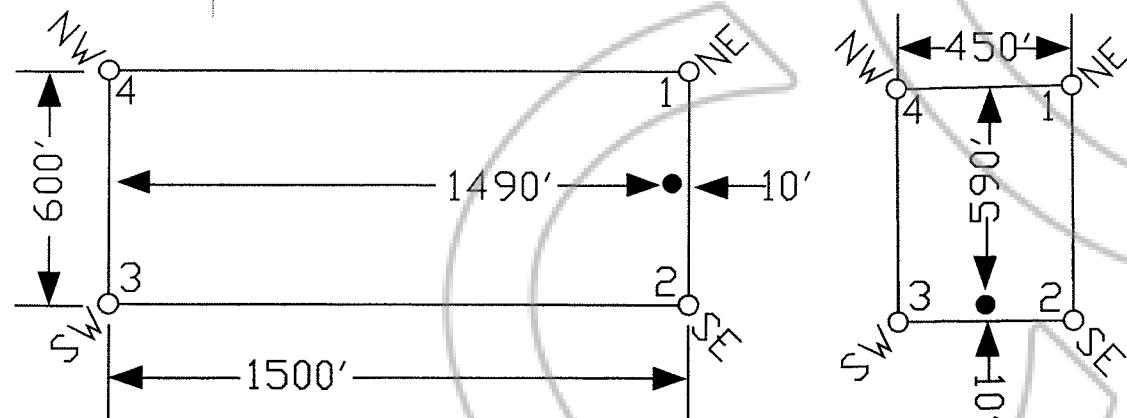
NOTES:
LOCATION MONUMENTS SET 10' FROM CLAIM END
CENTERLINES, UNLESS OTHERWISE NOTED.
ALL LOCATION MONUMENTS AND CLAIM POSTS
ARE 2"x2"x4' WOODEN STAKES.
DASHED SECTION LINES INDICATE PROJECTED
SECTIONS.

TIE POINT DATA:
THE NORTHEAST CORNER OF PHOENIX 178 LIES APPROXIMATELY
4,450 FEET WEST AND 7,638 FEET SOUTH OF THE NORTHEAST
CORNER OF SURVEYED SECTION 6, T.26N., R.53E., M.D.B.M.

12



TYPICAL CLAIMS



LOCATION DATES:
11/08/14 - Phoenix 177-179

	Location: Golden Gryphon USA, Inc. 1400 Tanager Place RR21, Roberts Creek, BC V0N 2W1 Phoenix 177-179 Lode Claims T.26N., R.52,53E.; Eureka County, Nevada	
	DATE: February, 2015	DRAWN BY: JS