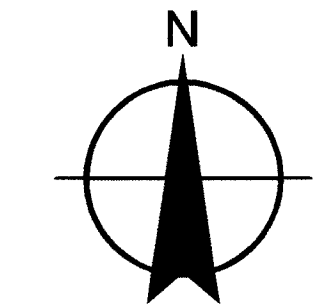
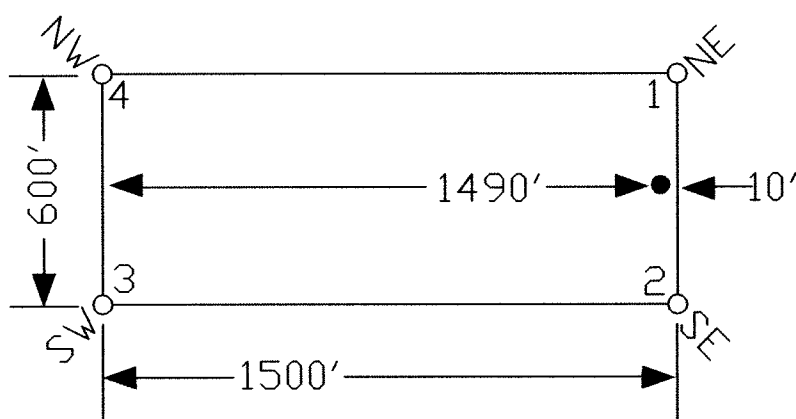


TYPICAL CLAIM



250 0 250 500

Scale 1" = 500'

1:6000

19

276

277

1211

.

1123

1212

.

1124

1213

.

1125

1214

.

1126

1215

.

1127

1216

.

1128

EXISTING PHOENIX CLAIMS

1217

30

1218

.

1219

LM 350'

31

TIE POINT DATA:
THE NORTHEAST CORNER OF PHOENIX 1211 LIES APPROXIMATELY
2,095 FEET WEST AND 3,505 FEET SOUTH OF THE SURVEYED
NORTHEAST CORNER OF SECTION 19, T.26N., R.53E., M.D.B.M.

TIE POINT DATA:
THE NORTHEAST CORNER OF PHOENIX 1217 LIES APPROXIMATELY
2,711 FEET WEST AND 7,045 FEET SOUTH OF THE SURVEYED
NORTHEAST CORNER OF SECTION 19, T.26N., R.53E., M.D.B.M.

LOCATION DATES:
February 17, 2015 - Phoenix 1217-1219
February 24, 2015 - Phoenix 1211-1216

NOTES:
LOCATION MONUMENTS SET 10' FROM CLAIM END
CENTERLINES UNLESS NOTED ON MAP. ALL LOCATION
MONUMENTS AND CLAIM POSTS ARE 2"x2"x4' WOODEN STAKES.

DASHED SECTION LINES INDICATE PROJECTED SECTIONS.

DOC # 0229341

05/11/2015 06:17 AM

Official Record

Recordings Requested By:

CARLIN TREND MINING SERVICES

Eureka County - NV

Sara Simmons - Recorder

Fee: \$125.00 Page 1 of 1

RPT: Recorded By: LH

Book- Page- 0000

0229341



Locator:
Golden Gryphon USA Inc.
1400 Tanager Place RR21, Roberts Creek, BC V0N 2W1
Phoenix 1211-1219 Lode Claims
T.26N., R.53E.; Eureka County, Nevada

369 - 5th STREET
PH: (775) 778-0668 ELKO, NV 89801 FAX: (775) 778-0687

DATE: May 2015
ACAD FILE NAME: client\15\gold\gs_0515.dwg
DRAWN BY: sms
PLOT SCALE: 1" = 500'