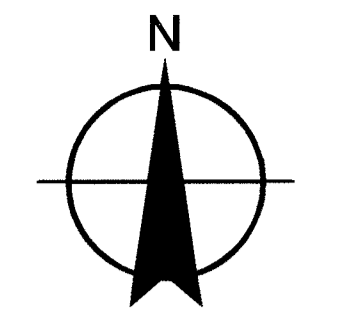
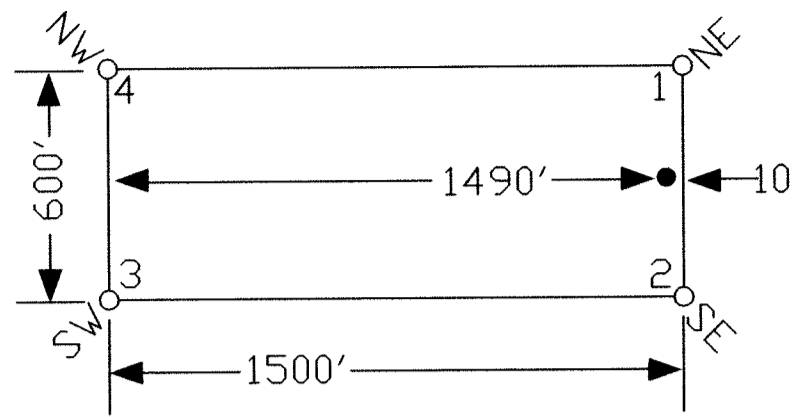


TYPICAL CLAIM



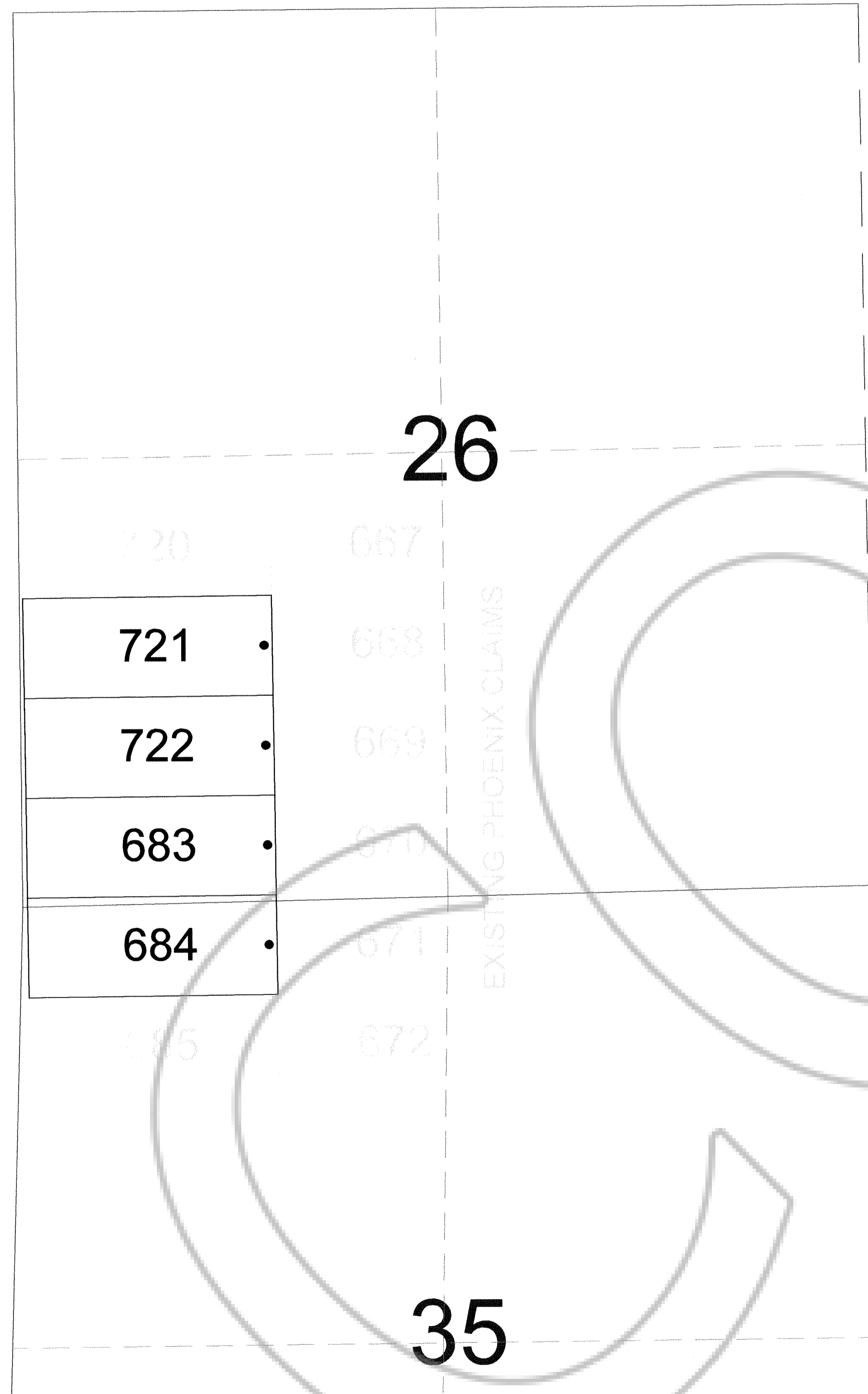
Scale 1" = 500'
1:6000

NOTES:
LOCATION MONUMENTS SET 10' FROM CLAIM END
CENTERLINES UNLESS NOTED ON MAP. ALL LOCATION
MONUMENTS AND CLAIM POSTS ARE 2"x2"x4' WOODEN STAKES.


DASHED SECTION LINES INDICATE PROJECTED SECTIONS.

TIE POINT DATA:
THE SOUTHWEST CORNER OF PHOENIX 684 LIES APPROXIMATELY
35 FEET EAST AND 546 FEET SOUTH OF THE SURVEYED
NORTHWEST CORNER OF SECTION 35, T.27N., R.52E., M.D.B.M.

LOCATION DATES:
February 17, 2015 - Phoenix 683, 684, 721, 722



DOC # 0229346
Official Record
Recording requested by
CARLIN TROND MINING SERVICES
Eureka County - NV
Sara Simmons - Recorder
Fee: \$64.00 Page 1 of 1
Book- Page- Recorded By: LH
0229346

	Locator: Golden Gryphon USA Inc. 1400 Tanager Place RR21, Roberts Creek, BC V0N 2W1 Phoenix 683-684,721-722 Lode Claims T.27N.,R.52E.; Eureka County, Nevada	
	DATE: May 2015	IACAD FILE NAME: 0229346.dwg PLOT SCALE: 1" = 500'
369 - 5th STREET PH: (775) 778-0668 ELKO, NV 89801 FAX: (775) 778-0687		