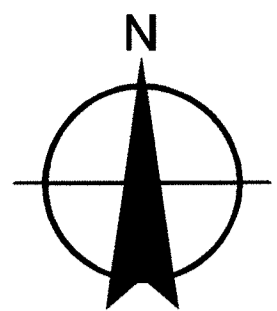
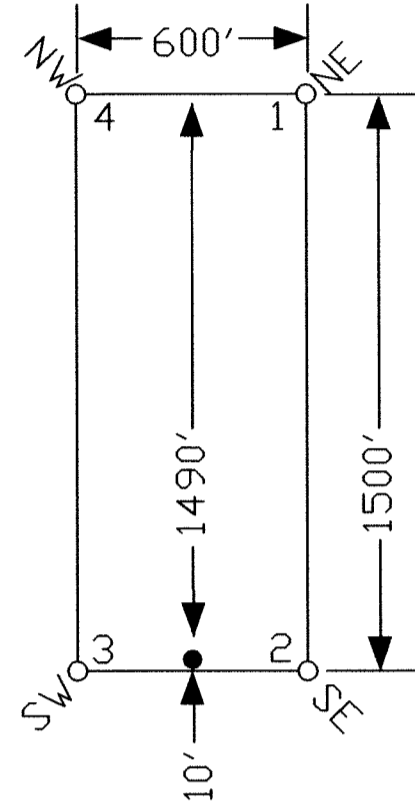
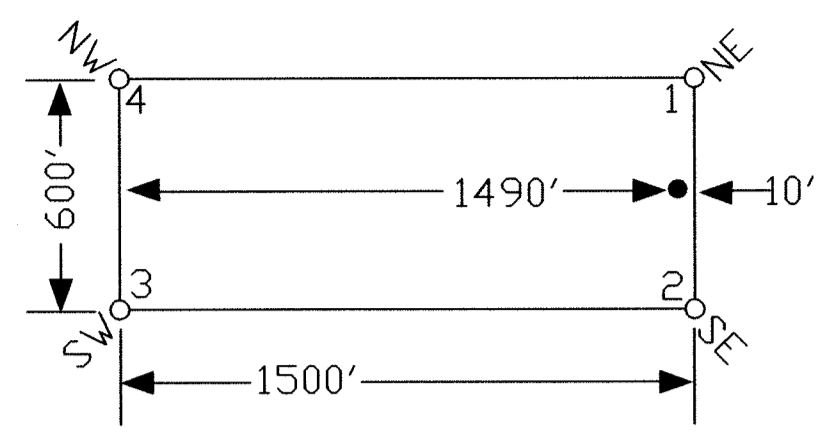


T.26N.



Scale 1" = 500'  
1:6000

TYPICAL CLAIMS



3

6

|         |         |
|---------|---------|
| LM 100' | LM 100' |
| SLC 34  | SLC 35  |

MC 19  
MC 20  
MC 21  
MC 22  
MC 23

MC Sims

LOCATION DATES:  
February 17, 2015 - SLC 34-35  
February 24, 2015 - Phoenix 172-176,496

TIE POINT DATA:  
THE NORTHWEST CORNER OF SLC 34 LIES APPROXIMATELY  
1,223 FEET EAST AND 3,945 FEET SOUTH OF THE SURVEYED  
NORTHWEST CORNER OF SECTION 3, T.26N., R.52E., M.D.B.M.

TIE POINT DATA:  
THE NORTHWEST CORNER OF PHOENIX 496 LIES APPROXIMATELY  
15,094 FEET EAST AND 4,718 FEET SOUTH OF THE SURVEYED  
NORTHWEST CORNER OF SECTION 3, T.26N., R.52E., M.D.B.M.

|             |             |
|-------------|-------------|
| Phoenix 496 |             |
| Phoenix 172 | Phoenix 173 |
| Phoenix 174 | Phoenix 175 |
| Phoenix 176 | Phoenix 177 |

Phoenix 1200'

10

12

7

179  
180  
EXISTING LIGEN CLAIMS

NOTES:  
LOCATION MONUMENTS SET 10' FROM CLAIM END  
CENTERLINES UNLESS NOTED ON MAP. ALL LOCATION  
MONUMENTS AND CLAIM POSTS ARE 2"x2"x4' WOODEN STAKES.

DASHED SECTION LINES INDICATE PROJECTED SECTIONS.

DOC # 0229355

05/11/2015 09:24 AM  
**Official Record**  
Recording Provided By:  
CARLIN TREND MINING SERVICES  
Eureka County - NV  
Sara Simmons - Recorder  
Fee \$124.00 Page 1 of 1  
RPTL Recorded By: LH  
Book- Page-



MINING SERVICES  
**CarlinTrend**  
Geology • Drilling • Surveying

369 - 5th STREET  
PH: (775) 778-0668 ELKO, NV 89801 FAX: (775) 778-0687

Locator:  
**Golden Gryphon USA Inc.**  
1400 Tanager Place RR21, Roberts Creek, BC V0N 2W1  
Phoenix & SLC Claims  
T.26N., R.52&53E.; Eureka County, Nevada

DATE: May 2015  
ACAD FILE NAME: (sheet) 15.dwg  
PLOT SCALE: 1" = 500'  
DRAWN BY: sms