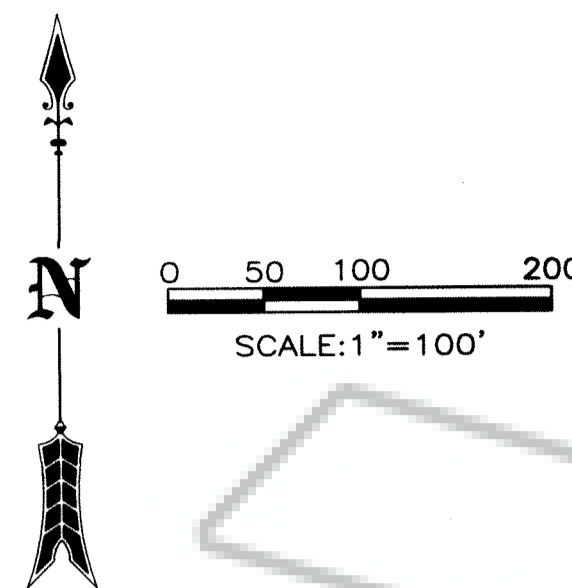
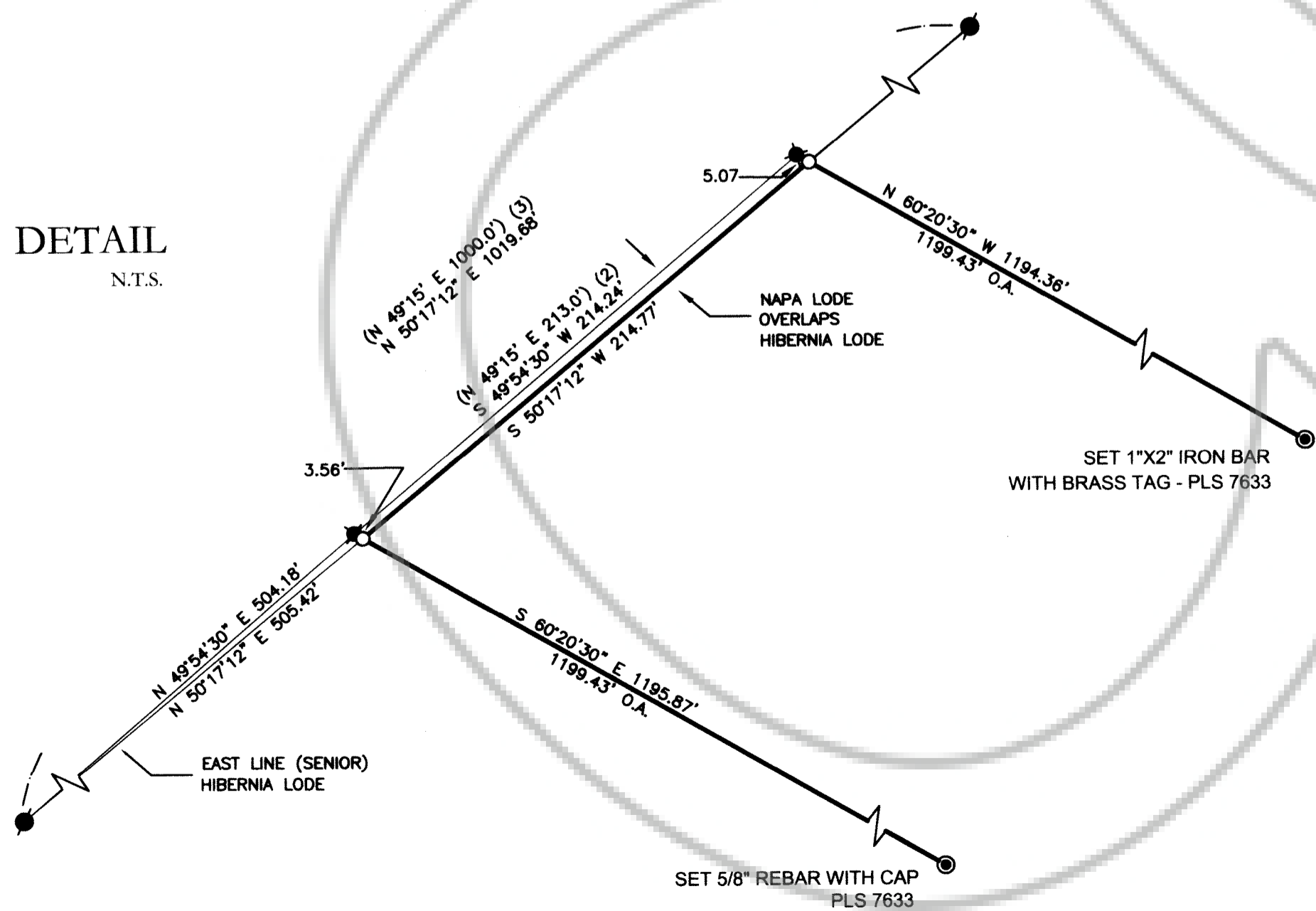




DETAIL
N.T.S.



REFERENCES

- (1) GRANT DEED DOC NO. 0216935
- (2) 1892 PLAT OF NAPA LODE – MINERAL SURVEY NO. 320
- (3) 1890 PLAT OF HIBERNIA LODE – MINERAL SURVEY NO. 311
- (4) 1958 BLM TOWNSHIP PLAT T19N, R53E, MDM (FIELD WORK DONE IN 1934–1937) AND ASSOCIATED FIELD NOTES ON FILE WITH THE NV BLM OFFICE

LEGEND

- FD BLM BRASS CAP MONUMENT MARKING 1/4 SECTION CORNER LOCATION PER (4)
- FD 4X4 POST EMBEDDED IN 3' TALL BOULDER MARKING MINERAL MONUMENT NO 12 PER (2)
- FD 4X4 REDWOOD POST SCRIBED PER (2)
- FD 4X4 REDWOOD POST SCRIBED PER (3)

- SET MONUMENT AS DESCRIBED HEREON
- COMPUTED POSITION – NOTHING FOUND OR SET

O.A. OVERALL DIMENSION

BASIS OF BEARINGS

THE BASIS OF BEARINGS OF THIS SURVEY IS NEVADA STATE PLANE NAD83 EAST ZONE, TAKEN FROM GPS STATIC OBSERVATION BETWEEN THE FOUND MINERAL MONUMENT 12, AND THE FOUND SOUTH ONE-QUARTER CORNER OF SECTION 34, AS SHOWN HEREON, SAID LINE BEING SOUTH 32°05'59" EAST.

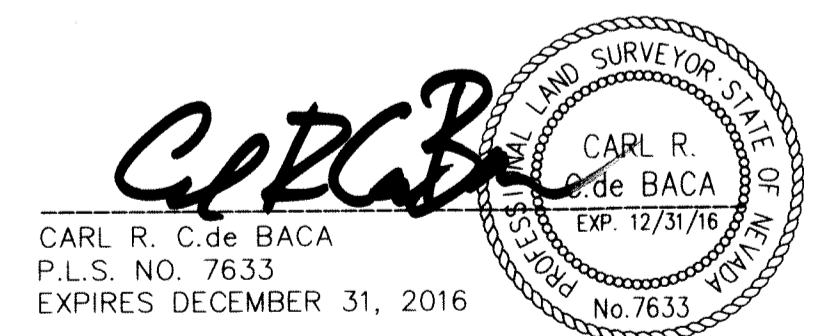
NOTES

- THE NAPA LODE, AS SHOWN HEREON, IS ONE OF SEVERAL PATENTS CONTAINED IN THE GRANT BARGAIN AND SALE DEED RECORDED IN EUREKA COUNTY AS DOC. NO. 0216935, OFFICIAL RECORDS. THIS SURVEY IS NOT INTENDED TO BE A COMPREHENSIVE RETRACEMENT OF ALL PATENT PARCELS CONTAINED IN SAID DEED.
- THE DISTANCES HEREON ARE GRID DISTANCES COMPUTED AT SEA LEVEL. TO OBTAIN GROUND VALUES FOR THE DIMENSIONS SHOWN, MULTIPLY DISTANCES HEREON BY THE COMBINED FACTOR OF 1.000457759

SURVEYOR'S CERTIFICATE

I, CARL R. C.de BACA, A PROFESSIONAL LAND SURVEYOR LICENSED IN THE STATE OF NEVADA CERTIFY THAT:

- THIS PLAT REPRESENTS THE RESULTS OF A SURVEY CONDUCTED UNDER MY DIRECT SUPERVISION AT THE INSTANCE OF PROSPECT MOUNTAIN GOLD.
- THE LAND SURVEYED LIES WITHIN SECTION 34, T. 19 N., R.53 E., M.D.M., NYE COUNTY, NEVADA AND THE SURVEY WAS COMPLETED ON AUGUST 31, 2015.
- THIS PLAT COMPLIES WITH THE APPLICABLE STATE STATUTES AND ANY LOCAL ORDINANCES IN EFFECT ON THE DATE THAT THE SURVEY WAS COMPLETED, AND THE SURVEY WAS CONDUCTED IN ACCORDANCE WITH CHAPTER 625 OF THE NEVADA ADMINISTRATIVE CODE.
- THE MONUMENTS DEPICTED ON THIS PLAT ARE OF THE CHARACTER SHOWN AND OCCUPY THE POSITIONS INDICATED, AND ARE OF SUFFICIENT DURABILITY.



CARL R. C.de BACA
P.L.S. NO. 7633
EXPIRES DECEMBER 31, 2016

9/2/15

FILING DATA DOC # 0229835

FIL 09/08/2015 09:15 AM
Official Record
Recording Requested By
PROSPECT MOUNTAIN GOLD
FIL Eureka County - NV
DA Sara Simmons - Recorder
Fee \$21.00 Page 1 of 1
RPT: Recorded By: LH
TIN Book- Page-

SA 0229835
EUREKA COUNTY RECORDER/AUDITOR



RECORD OF SURVEY FOR PROSPECT MOUNTAIN GOLD

BEING A RETRACEMENT OF
THE NAPA LODE CLAIM MS# 320
SITUATE IN THE SOUTH 1/2 OF SECTION 34
T. 19 N., R.53 E., M.D.M.

EUREKA COUNTY

NEVADA

ALIDADE, INC.
P.O. BOX 1586 ELKO, NV 89803
775-777-8587
alidade.nv@sbglobal.net

SHEET 1
OF 1