

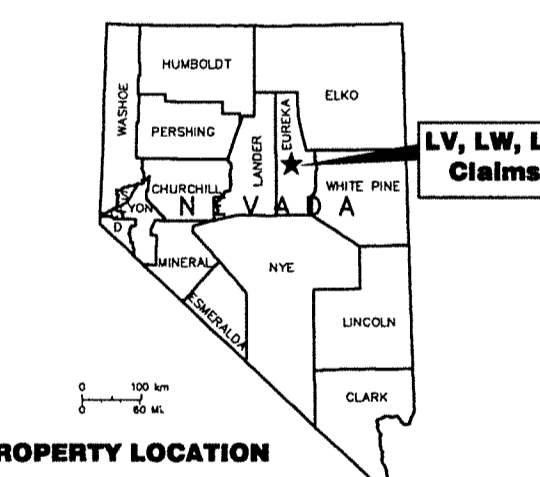
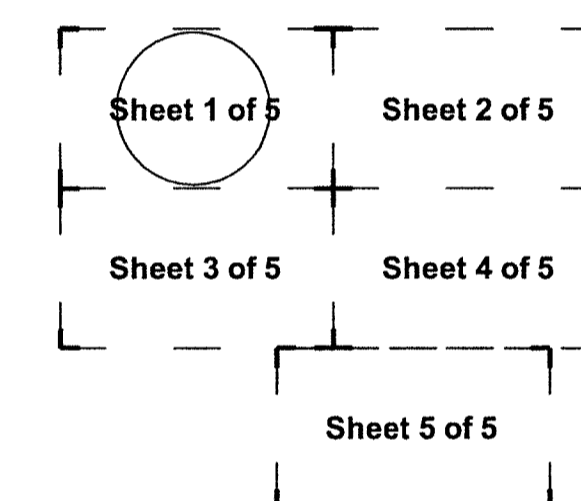
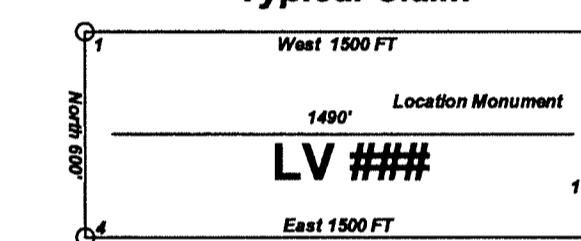
Location Map for LV 1-110, LW 1-165 & LY 1-118 Lode Mining Claims Sheet 1 of 5

Locator:
Kinross Gold U.S.A., Inc.
5075 South Syracuse St., 8th Floor
Denver, CO. 80237

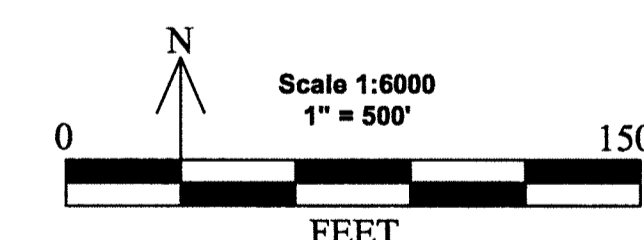
LV lode claims 1-40 were located on 9/3/15 and LV lode claims 41-72 & 79-110 were located on 9/4/15 and LY lode claims 1-36 were located on 9/4/15 and LY lode claims 37-82 were located on 9/5/15 and LV lode claims 73-78 were located on 9/5/15 and LW lode claims 1-50 were located on 9/5/15 and LY lode claims 83-100 were located on 9/6/15 and LW lode claims 51-100 & 105-150 were located on 9/6/15 and LW lode claims 101-104 & 151-165 were located on 9/7/15 and LY lode claims 101-118 were located on 9/7/15 in Section 1, Township 23.5 North, Range 50 East and in Sections 2-6 & 8-11, Township 23 North, Range 51 East and in Sections 29-34, Township 24 North, Range 51 East in Eureka County, Nevada.

Notes:
Location Monuments are set 10' from claim end lines unless noted otherwise. All location and corner monuments are 2" X 2" X 4' wooden posts with scribed metal tags. All claims are 600' by 1500' unless noted otherwise.

Typical Claim



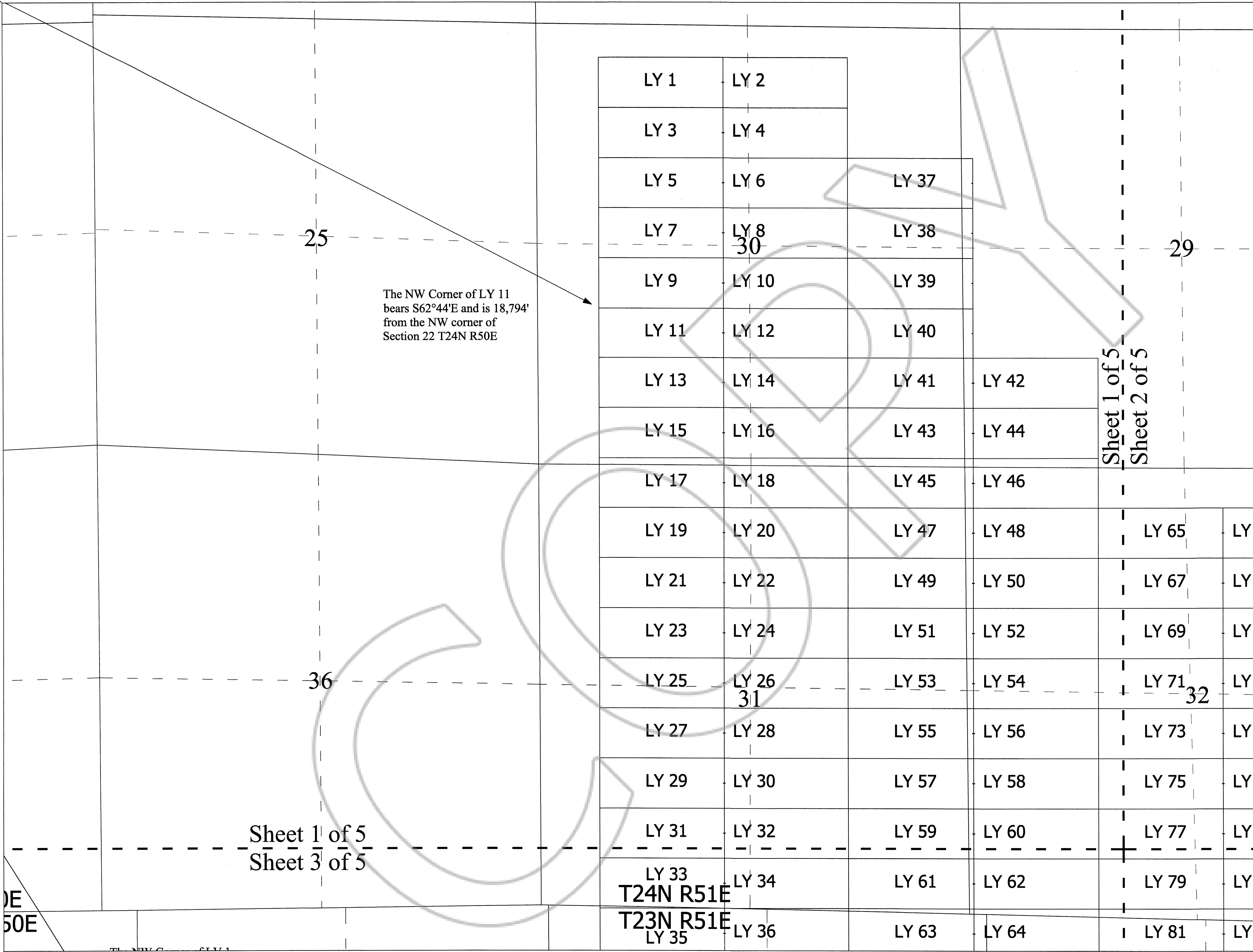
PROPERTY LOCATION



LOCATION MAP for LV, LY & LW
Lode Mining Claims
Sheet 1 of 5
Kinross Gold U.S.A., Inc.
5075 South Syracuse St., 8th Floor
Denver, CO. 80237
LV_LW_LY_Claims_N27E11Fdwg
October 17, 2015
Drawn By: G.L.S. Land Services
Located By: T&T Exploration L.L.C.
Datum: 1927, Projection: UTM,
Zone: 11, Units: Feet

DOC # 0230459

11/09/2015 02:26 PM
Official Record
Recording Requested By:
KINROSS GOLD USA INC.
Eureka County - NV
Sara Simmons - Recorder
Fee \$5,899.00 Page 1 of 5
RPT1 Recorded By: LH
Book- Page- 0000



Sheet 1 of 5
Sheet 3 of 5

Sheet 1 of 5
Sheet 2 of 5

DE
50E

LY 33
T24N R51E
LY 35
T23N R51E
LY 36

0230459

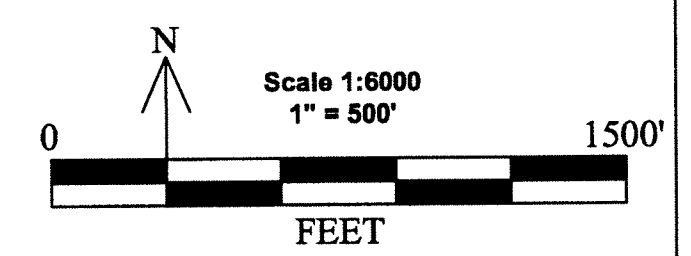
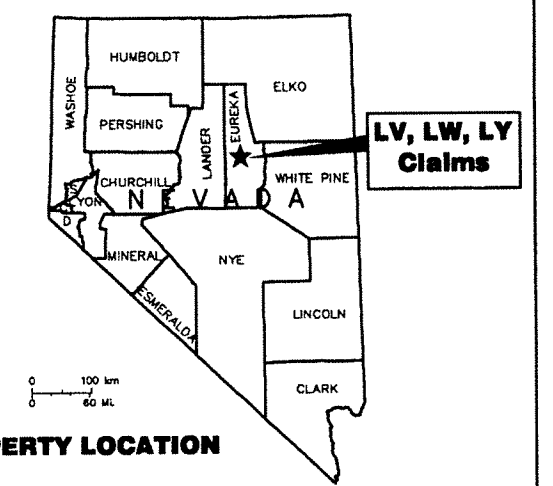
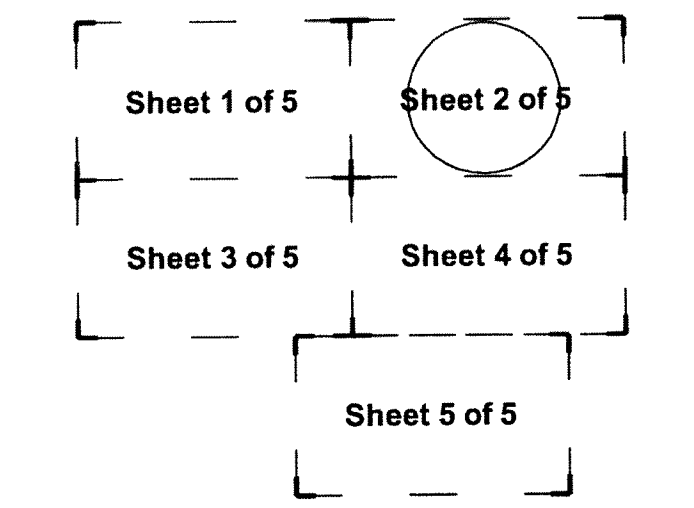
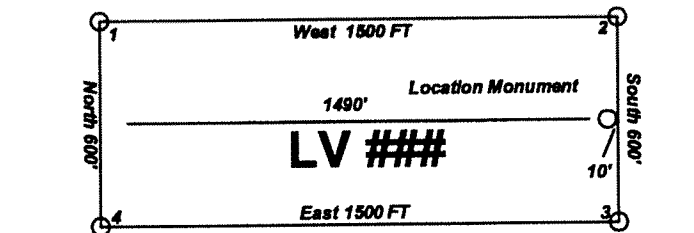
Location Map for LV 1-110, LW 1-165 & LY 1-118 Lode Mining Claims Sheet 2 of 5

Locator:
Kinross Gold U.S.A., Inc.
5075 South Syracuse St., 8th Floor
Denver, CO. 80237

LV lode claims 1-40 were located on 9/3/15 and
LV lode claims 41-72 & 79-110 were located on 9/4/15 and
LY lode claims 1-36 were located on 9/4/15 and
LY lode claims 37-82 were located on 9/5/15 and
LV lode claims 73-78 were located on 9/5/15 and
LW lode claims 1-50 were located on 9/5/15 and
LY lode claims 83-100 were located on 9/6/15 and
LW lode claims 51-100 & 105-150 were located on 9/6/15 and
LY lode claims 101-104 & 151-165 were located on 9/7/15 and
LY lode claims 101-118 were located on 9/7/15 in
Section 1, Township 23.5 North, Range 50 East and in
Sections 2-6 & 8-11, Township 23 North, Range 51 East and in
Sections 29-34, Township 24 North, Range 51 East in
Eureka County, Nevada.

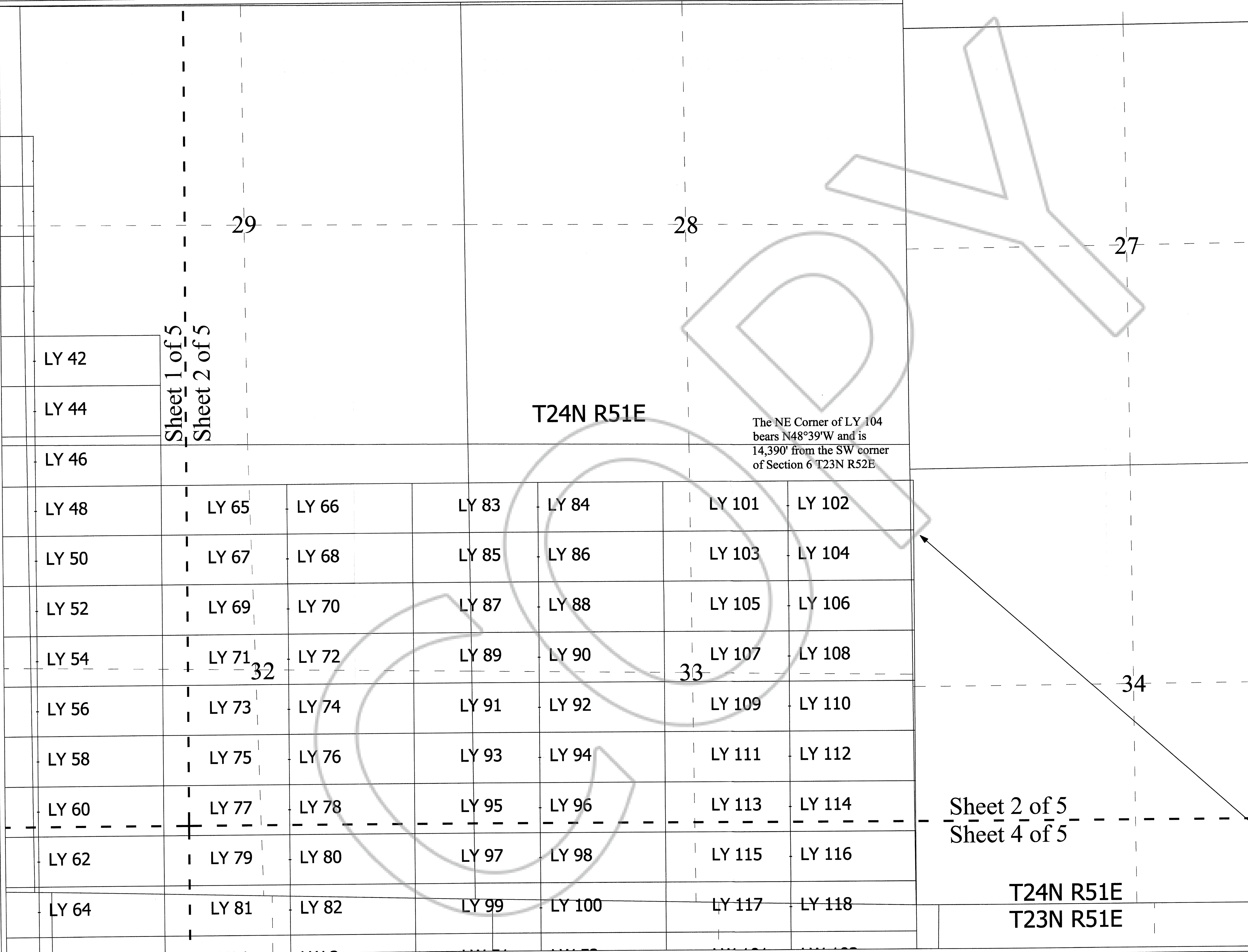
Notes:
Location Monuments are set 10' from
claim end lines unless noted otherwise.
All location and corner monuments are
2" X 2" X 4' wooden posts with scribed
metal tags. All claims are 600' by 1500'
unless noted otherwise.

Typical Claim



LOCATION MAP for LV, LY & LW
Lode Mining Claims
Sheet 2 of 5
Kinross Gold U.S.A., Inc.
5075 South Syracuse St., 8th Floor
Denver, CO. 80237
LV_LW_LY_Claims_N27211FL.dwg
October 17, 2015
Drawn By: G.I.S. Land Services
Located By: T&T Exploration L.L.C.
Datum: 1927, Projection: UTM,
Zone: 11, Units: Feet

DOC # 0230459
11/09/2015 10:28 AM
Official Record
Recorded & Indexed By:
KINROSS GOLD USA INC.
Eureka County - NV
Sara Simmons - Recorder
Fee: \$5,899.00 Page 3 of 5
Book- 0000 Page- 0000
0230459



T24N R51E

The NE Corner of LY 104
bears N48°39'W and is
14,390' from the SW corner
of Section 6 T23N R52E

Sheet 2 of 5
Sheet 4 of 5

T24N R51E
T23N R51E

Sheet 1 of 5
Sheet 2 of 5

LY 42
LY 44
LY 46
LY 48
LY 50
LY 52
LY 54
LY 56
LY 58
LY 60
LY 62
LY 64

LY 65
LY 67
LY 69
LY 71
LY 73
LY 75
LY 77
LY 79
LY 81
LY 82

LY 83
LY 85
LY 87
LY 89
LY 91
LY 93
LY 95
LY 97
LY 99

LY 84
LY 86
LY 88
LY 90
LY 92
LY 94
LY 96
LY 98
LY 100

LY 101
LY 103
LY 105
LY 107
LY 109
LY 111
LY 113
LY 115
LY 117

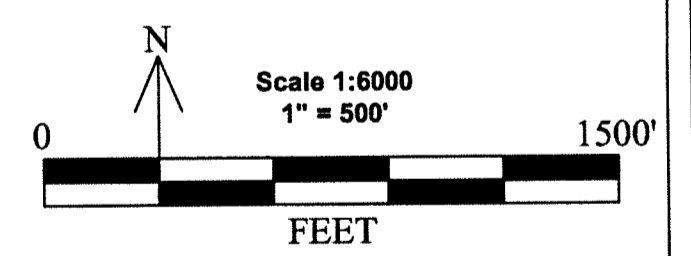
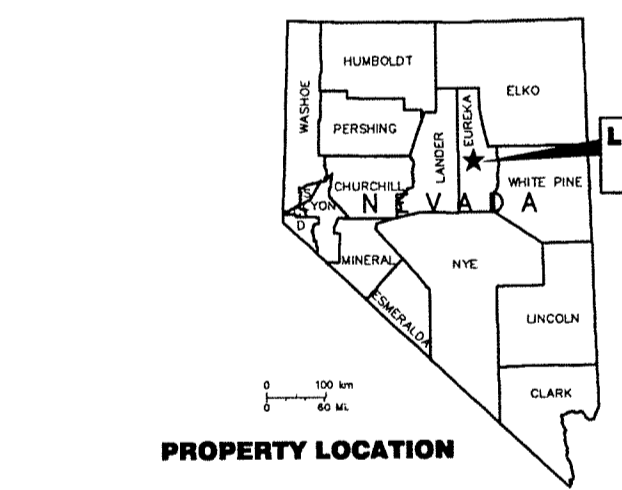
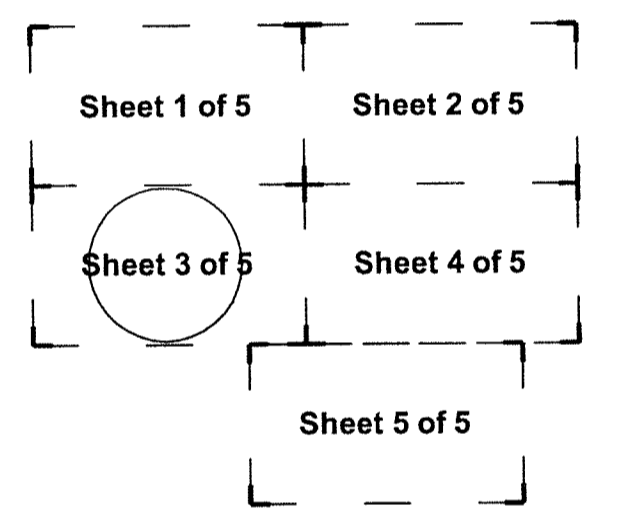
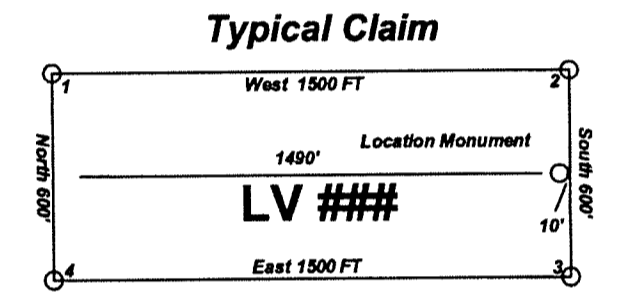
LY 102
LY 104
LY 106
LY 108
LY 110
LY 112
LY 114
LY 116
LY 118

**Location Map for
LV 1-110, LW 1-165 &
LY 1-118
Lode Mining Claims
Sheet 3 of 5**

Locator:
Kinross Gold U.S.A., Inc.
5075 South Syracuse St., 8th Floor
Denver, CO. 80237

LV lode claims 1-40 were located on 9/3/15 and LV lode claims 41-72 & 79-110 were located on 9/4/15 and LY lode claims 1-36 were located on 9/4/15 and LY lode claims 37-82 were located on 9/5/15 and LV lode claims 73-78 were located on 9/5/15 and LW lode claims 1-50 were located on 9/5/15 and LY lode claims 83-100 were located on 9/6/15 and LW lode claims 51-100 & 105-150 were located on 9/6/15 and LW lode claims 101-104 & 151-165 were located on 9/7/15 and LY lode claims 101-118 were located on 9/7/15 in Section 1, Township 23.5 North, Range 50 East and in Sections 2-6 & 8-11, Township 23 North, Range 51 East and in Sections 29-34, Township 24 North, Range 51 East in Eureka County, Nevada.

Notes:
Location Monuments are set 10' from claim end lines unless noted otherwise. All location and corner monuments are 2" X 2" X 4' wooden posts with scribed metal tags. All claims are 600' by 1500' unless noted otherwise.



LOCATION MAP for LV, LY & LW Lode Mining Claims Sheet 3 of 5
Kinross Gold U.S.A., Inc.
5075 South Syracuse St., 8th Floor
Denver, CO. 80237
LV_LW_LY_Claims_N2721FLdwg
October 17, 2015
Drawn By: G.I.S. Land Services
Located By: T&T Exploration L.L.C.
Datum: 1927, Projection: UTM, Zone: 11, Units: Feet

DOC # 0230459
1/09/2015 02:26 PM
Official Record
Recording Requested By:
Kinross Gold U.S.A., Inc.
Eureka County - NV
Sara Simmons - Recorder
Fee: \$5,899.00 Page 3 of 5
2015 Recorded By: LH
Book- Page- 0000



0E
50E

The NW Corner of LV 1 bears S32°11'E and is 20,099' from the NW corner of Section 22 T24N R50E

T23HN R50E

T23N R50E

T23N R51E

	LV 1	LV 2	LV 17	LV 18	LV 43	LV 44	LV 75	LV 76	LW 3	LV
	LV 3	LV 4	LV 19	LV 20	LV 45	LV 46	LV 77	LV 78	LW 5	LV
	LV 5	LV 6	LV 21	LV 22	LV 47	LV 48	LV 79	LV 80	LW 7	LV
	LV 7	LV 8	LV 23	LV 24	LV 49	LV 50	LV 81	LV 82	LW 9	LV
	LV 9	LV 10	LV 25	LV 26	LV 51	LV 52	LV 83	LV 84	LW 11	LV
	LV 11	LV 12	LV 27	LV 28	LV 53	LV 54	LV 85	LV 86	LW 13	LV
		LV 13	LV 29	LV 30	LV 55	LV 56	LV 87	LV 88	LW 15	LV
		LV 14	LV 31	LV 32	LV 57	LV 58	LV 89	LV 90	LW 17	LV
		LV 15	LV 33	LV 34	LV 59	LV 60	LV 91	LV 92	LW 19	LV
		LV 16	LV 35	LV 36	LV 61	LV 62	LV 93	LV 94	LW 21	LV
			LV 37	LV 38	LV 63	LV 64	LV 95	LV 96	LW 23	LV
			LV 39	LV 40	LV 65	LV 66	LV 97	LV 98	LW 25	LV
					LV 67	LV 68	LV 99	LV 100	LW 27	LV
					LV 69	LV 70	LV 101	LV 102	LW 29	LV
					LV 71	LV 72	LV 103	LV 104	LW 31	LV

LY 62	LY 79	LY 80	LY 97	LY 98	LY 115	LY 116
LY 64	LY 81	LY 82	LY 99	LY 100	LY 117	LY 118
LV 74	LW 1	LW 2	LW 51	LW 52	LW 101	LW 102
LV 76	LW 3	LW 4	LW 53	LW 54	LW 103	LW 104
LV 78	LW 5	LW 6	LW 55	LW 56	LW 105	LW 106
LV 80	LW 7	LW 8	LW 57	LW 58	LW 107	LW 108
LV 82	LW 9	LW 10	LW 59	LW 60	LW 109	LW 110
LV 84	LW 11	LW 12	LW 61	LW 62	LW 111	LW 112
LV 86	LW 13	LW 14	LW 63	LW 64	LW 113	LW 114
LV 88	LW 15	LW 16	LW 65	LW 66	LW 115	LW 116
LV 90	LW 17	LW 18	LW 67	LW 68	LW 117	LW 118
LV 92	LW 19	LW 20	LW 69	LW 70	LW 119	LW 120
LV 94	LW 21	LW 22	LW 71	LW 72	LW 121	LW 122
LV 96	LW 23	LW 24	LW 73	LW 74	LW 123	LW 124
LV 98	LW 25	LW 26	LW 75	LW 76	LW 125	LW 126
LV 100	LW 27	LW 28	LW 77	LW 78	LW 127	LW 128
LV 102	LW 29	LW 30	LW 79	LW 80	LW 129	LW 130
LV 104	LW 31	LW 32	LW 81	LW 82	LW 131	LW 132
LV 106	LW 33	LW 34	LW 83	LW 84	LW 133	LW 134

Sheet 2 of 5
Sheet 4 of 5

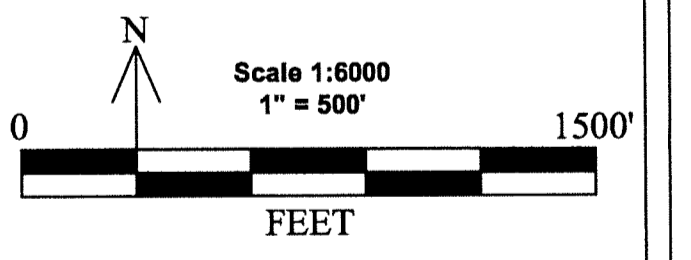
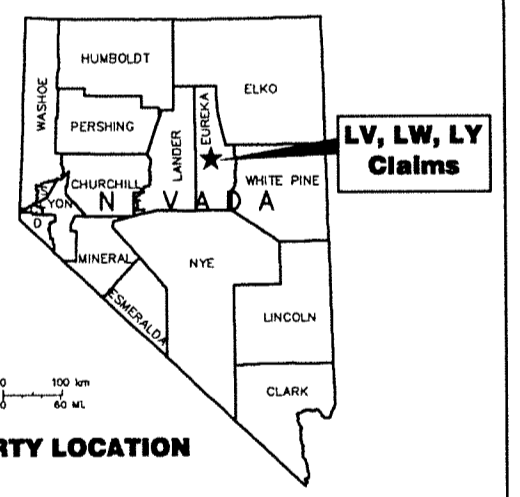
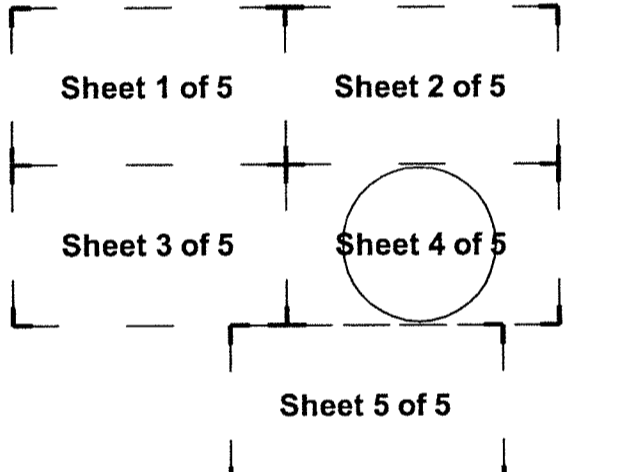
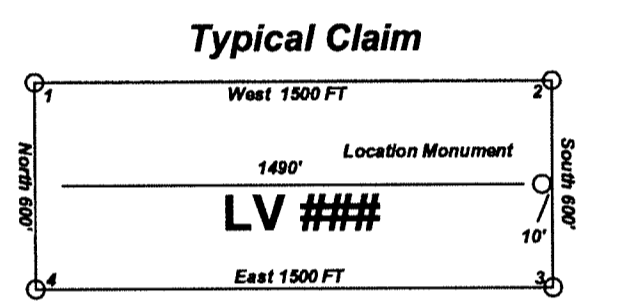
T24N R51E
T23N R51E

**Location Map for
LV 1-110, LW 1-165 &
LY 1-118
Lode Mining Claims
Sheet 4 of 5**

Locator:
Kinross Gold U.S.A., Inc.
5075 South Syracuse St., 8th Floor
Denver, CO. 80237

LV lode claims 1-40 were located on 9/3/15 and LV lode claims 41-72 & 79-110 were located on 9/4/15 and LY lode claims 1-36 were located on 9/4/15 and LY lode claims 37-82 were located on 9/5/15 and LW lode claims 1-50 were located on 9/5/15 and LW lode claims 51-100 & 105-150 were located on 9/6/15 and LW lode claims 101-104 & 151-165 were located on 9/7/15 and LY lode claims 101-118 were located on 9/7/15 in Section 1, Township 23.5 North, Range 50 East and in Sections 2-6 & 8-11, Township 23 North, Range 51 East and in Sections 29-34, Township 24 North, Range 51 East in Eureka County, Nevada.

Notes:
Location Monuments are set 10' from claim end lines unless noted otherwise. All location and corner monuments are 2" X 2" X 4' wooden posts with scribed metal tags. All claims are 600' by 1500' unless noted otherwise.



LOCATION MAP for LV, LY & LW
Lode Mining Claims
Sheet 4 of 5
Kinross Gold U.S.A., Inc.
5075 South Syracuse St., 8th Floor
Denver, CO. 80237
LV_LW_LY_Claims_N27Z11Fd.dwg
October 17, 2015
Drawn By: G.I.S. Land Services
Located By: T&T Exploration L.L.C.
Datum: 1927, Projection: UTM,
Zone: 11, Units: Feet

DOC # 0230459
Official Record
Eureka County - NV
Sara Simmons - Recorder
Fee: \$5,899.00 Page 4 of 5
Recorded By: LH
Book- Page- 0000



The SE Corner of LW 151
bears S78°30'W and is 9,492'
from the SW corner of
Section 6 T23N R52E

Sheet 3 of 5
Sheet 4 of 5

Sheet 4 of 5

Sheet 5 of 5

Sheet 3 of 5
Sheet 5 of 5

Sheet 4 of 5
Sheet 5 of 5

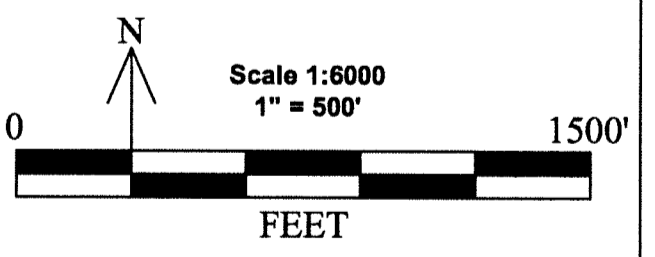
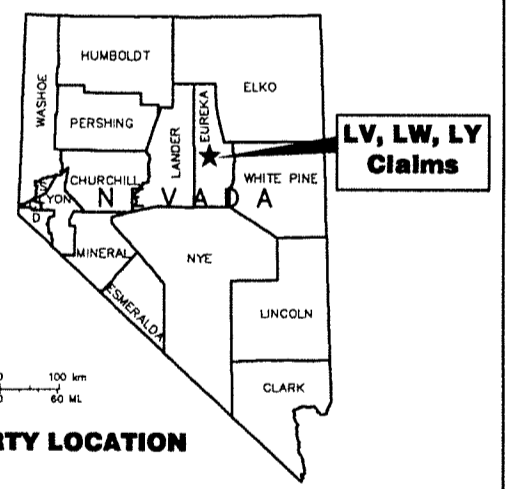
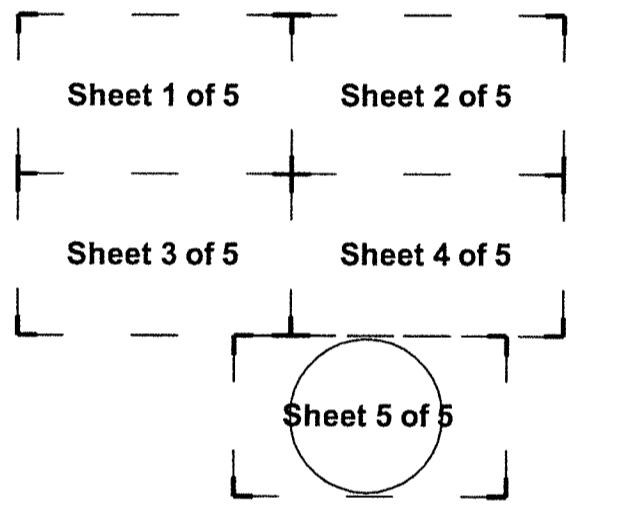
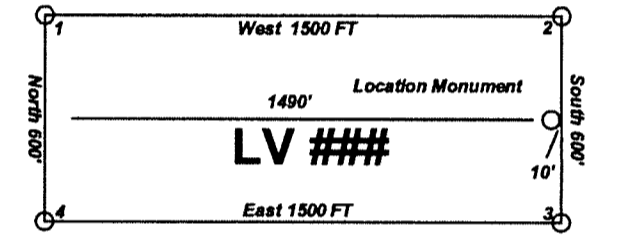
Location Map for LV 1-110, LW 1-165 & LY 1-118 Lode Mining Claims Sheet 5 of 5

Locator:
Kinross Gold U.S.A., Inc.
5075 South Syracuse St., 8th Floor
Denver, CO. 80237

LV lode claims 1-40 were located on 9/3/15 and LV lode claims 41-72 & 79-110 were located on 9/4/15 and LY lode claims 1-36 were located on 9/4/15 and LY lode claims 37-82 were located on 9/5/15 and LV lode claims 73-78 were located on 9/5/15 and LW lode claims 1-50 were located on 9/5/15 and LY lode claims 83-100 were located on 9/6/15 and LW lode claims 51-100 & 105-150 were located on 9/6/15 and LW lode claims 101-104 & 151-165 were located on 9/7/15 and LY lode claims 101-118 were located on 9/7/15 in Section 1, Township 23.5 North, Range 50 East and in Sections 2-6 & 8-11, Township 23 North, Range 51 East and in Sections 29-34, Township 24 North, Range 51 East in Eureka County, Nevada.

Notes:
Location Monuments are set 10' from claim end lines unless noted otherwise. All location and corner monuments are 2" X 2" X 4' wooden posts with scribed metal tags. All claims are 600' by 1500' unless noted otherwise.

Typical Claim



LOCATION MAP for LV, LY & LW
Lode Mining Claims
Sheet 5 of 5
Kinross Gold U.S.A., Inc.
5075 South Syracuse St., 8th Floor
Denver, CO. 80237
LV_LW_LY_Claims_N27Z11FLdwg
October 17, 2015
Drawn By: G.I.S. Land Services
Located By: T&T Exploration L.L.C.
Datum: 1927, Projection: UTM,
Zone: 11, Units: Feet

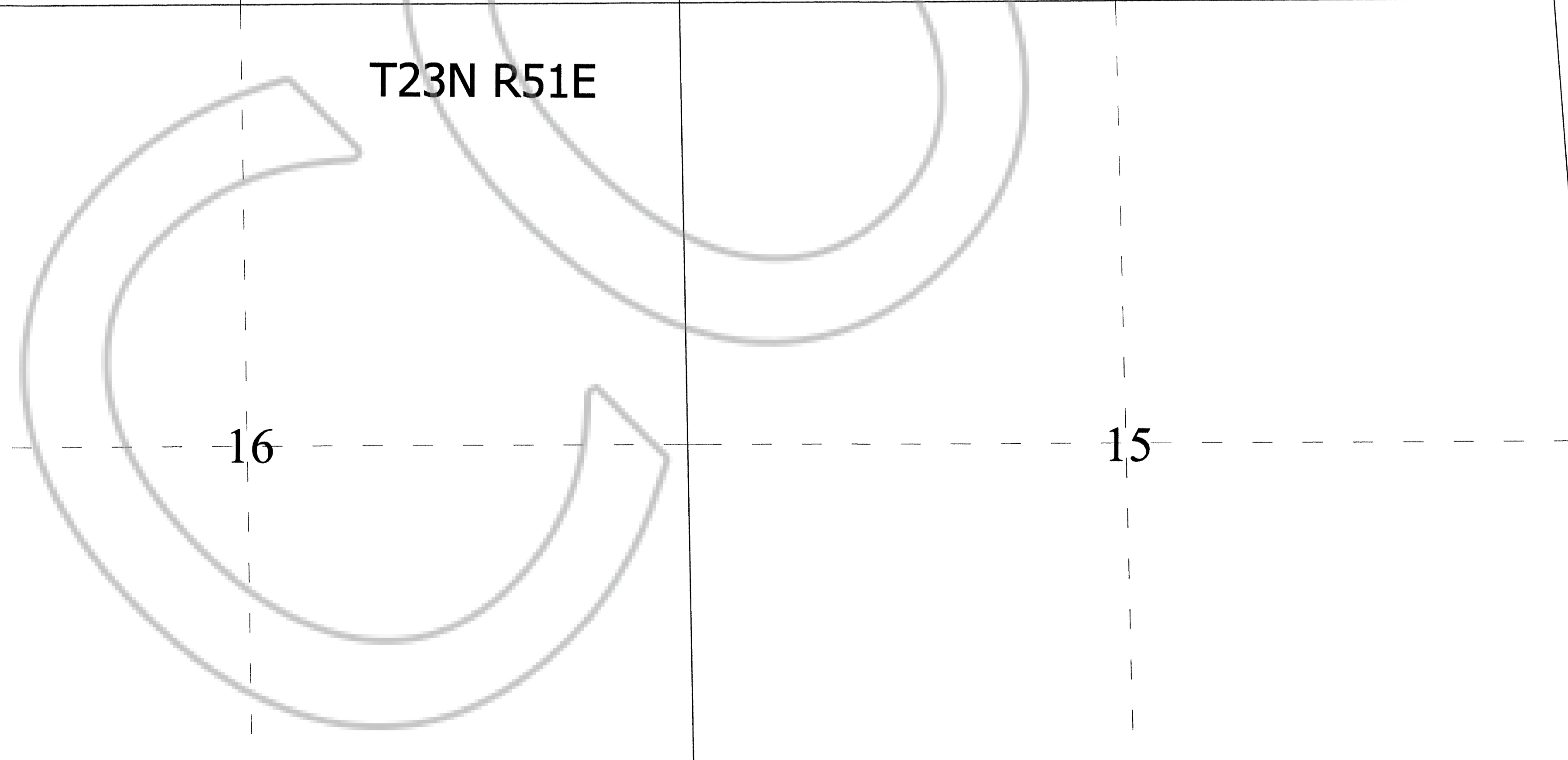
DOC # 0230459

Official Record
Recording requested by
KINROSS GOLD U.S.A., INC.
Eureka County - NV
Sara Simmons - Recorder
Fee: \$5,899.00 Page 5 of 5
Book- Recorded By- LK
Page- 0000



0230459

LV 103	LV 104	LW 31	LW 32	LW 81	LW 82	LW 131	LW 132	LW 156
LV 105	LV 106	LW 33	LW 34	LW 83	LW 84	LW 133	LW 134	LW 157
LV 107	LV 108	LW 35	LW 36	LW 85	LW 86	LW 135	LW 136	LW 158
LV 109	LV 110	LW 37	LW 38	LW 87	LW 88	LW 137	LW 138	LW 159
		LW 39	LW 40	LW 89	LW 90	LW 139	LW 140	LW 160
		LW 41	LW 42	LW 91	LW 92	LW 141	LW 142	LW 161
		LW 43	LW 44	LW 93	LW 94	LW 143	LW 144	LW 162
		LW 45	LW 46	LW 95	LW 96	LW 145	LW 146	LW 163
		LW 47	LW 48	LW 97	LW 98	LW 147	LW 148	LW 164
		LW 49	LW 50	LW 99	LW 100	LW 149	LW 150	LW 165



The SE Corner of LW 165
bears S42°06'W and is
13,872' from the SW corner
of Section 6 T23N R52E