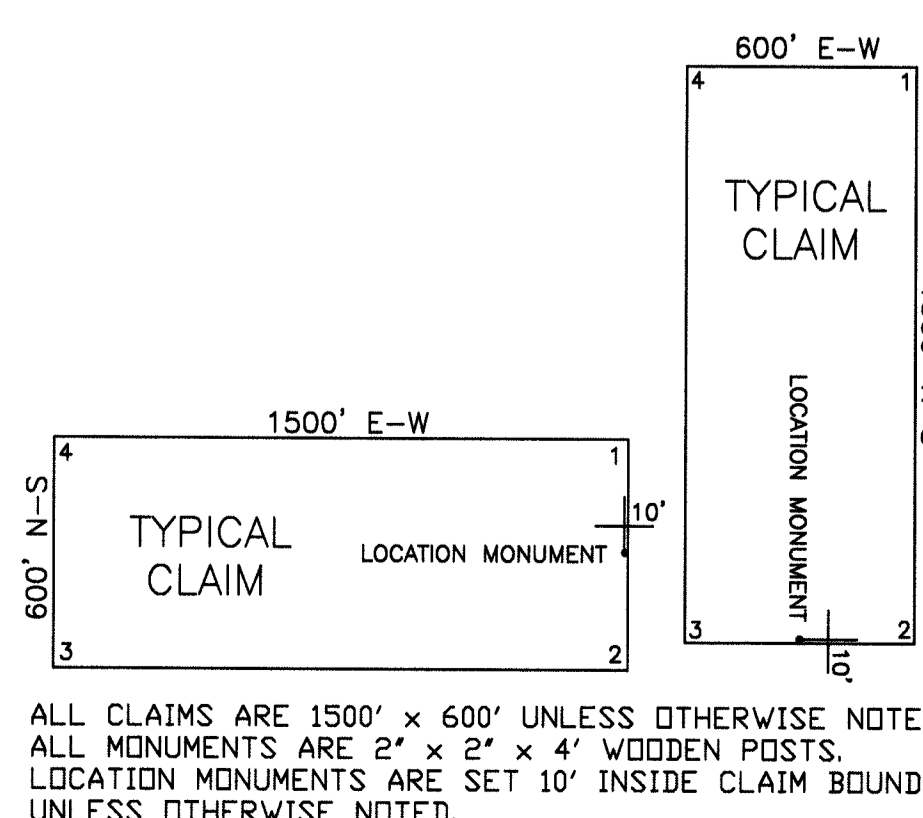
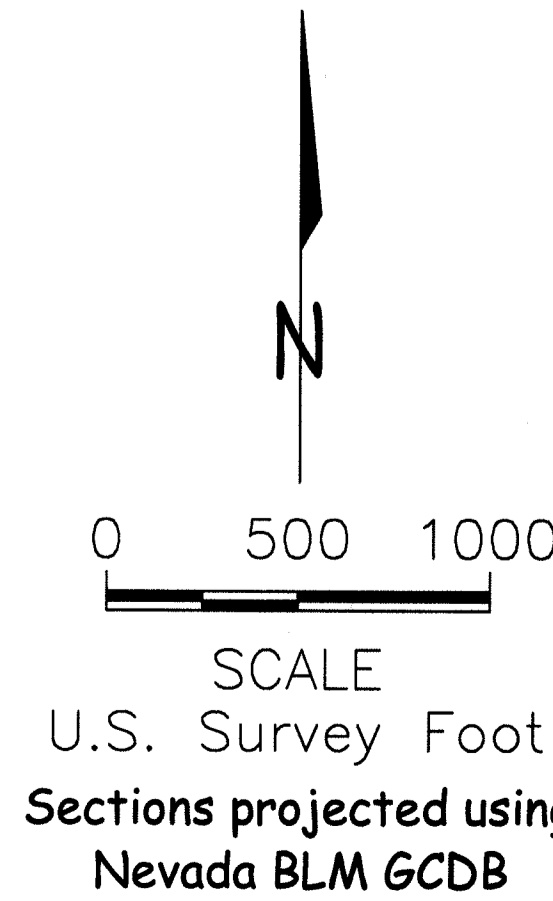


**CLAIM LOCATION DATES:**  
 September 6th, 2015: RIDGE 28-36  
 September 7th, 2015: RIDGE 1-27

**TIE POINTS:**  
 The NE corner of Ridge 19 is located approximately 647 feet north and 156 feet east of the SW corner of Section 18, T34N, R51E, M.D.M.  
 The SW corner of Ridge 32 is located approximately 123 feet south and 70 feet west of the SW corner of Section 18, T34N, R51E, M.D.M.



ALL CLAIMS ARE 1500' x 600' UNLESS OTHERWISE NOTED.  
 ALL MONUMENTS ARE 2' x 2' x 4' WOODEN POSTS.  
 LOCATION MONUMENTS ARE SET 10' INSIDE CLAIM BOUNDARY UNLESS OTHERWISE NOTED.

**DOC # 0230497**  
 11/10/2015 08:55 AM  
**Official Record**  
 Recording requested by  
 NEWMONT USA LTD  
 Eureka County - NV  
 Sara Simons - Recorder  
 Fee: \$544.00 Page 1 of 1  
 Book- Page- Recorded By: LH

**LODE MINING CLAIM MAP**  
**RIDGE 1-36**  
 T34N, R50-51E, M.D.M.  
 EUREKA COUNTY, NEVADA

**Locator:** NEWMONT USA LIMITED  
 1655 MOUNTAIN CITY HIGHWAY  
 ELKO, NEVADA 89801

*Drawn By: ARD    October 2015    Sheet 1 of 1*