

Existing TAZ Claims

TAZ 11

TAZ

200

T.23N.  
T.22N.

TAZ 28

36  
1

TAZ 29

31  
6

TAZ 30

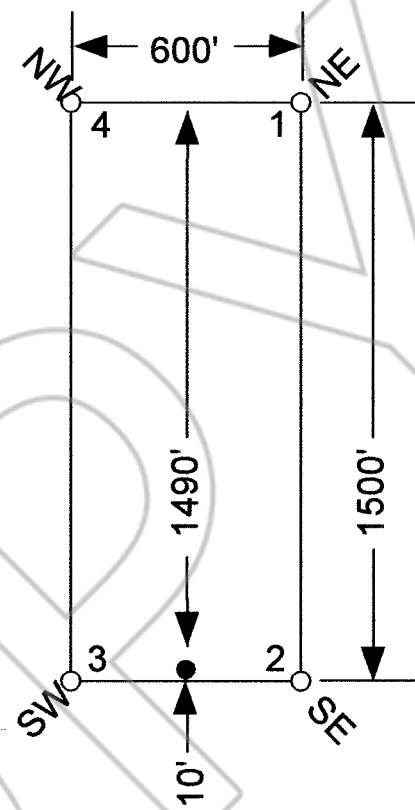
R.50E.  
R.51E.

LOCATION DATES:  
October 10, 2015 - TAZ 200

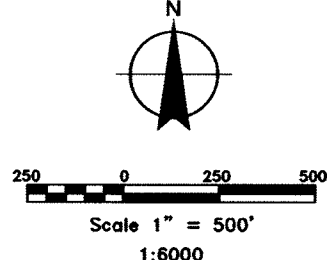
NOTES:  
LOCATION MONUMENTS SET 10' FROM CLAIM END  
CENTERLINES. ALL LOCATION MONUMENTS AND CLAIM  
POSTS ARE 2"x2"x4' WOODEN STAKES.

DASHED SECTION LINES INDICATE PROJECTED SECTIONS.

TYPICAL CLAIM



TIE POINT DATA:  
THE SOUTHEAST CORNER OF TAZ 200 LIES APPROXIMATELY  
26,724 FEET WEST AND 420 FEET SOUTH OF THE SOUTHEAST  
CORNER OF SURVEYED SECTION 35, T.23N., R.51E., M.D.B.M.



DOC # 0230813

01/06/2016 03:36 PM

Official Record


Recording requested By  
CARLIN TREND MINING SERVICES

Eureka County - NV  
Sara Simmons - Recorder

Fee: \$19.00 Page 1 of  
RPTT: Recorded By:  
Book- Page- 0000



0230813

 369 - 5th STREET PH: (775) 778-0668 ELKO, NV 89801 FAX: (775) 778-0687	Locator: David Cooper Knight and Debra Jane Knight, Trustees of the David C. and Debra J. Knight Living Trust 109 Fir Street, Elko, Nevada 89801-3023 TAZ 200 Lode Claim T.22,23N.,R.50E; Eureka County, Nevada	
	DATE: January 2016	ACAD FILE NAME 0230813.dwg PLOT SCALE 1" = 500'