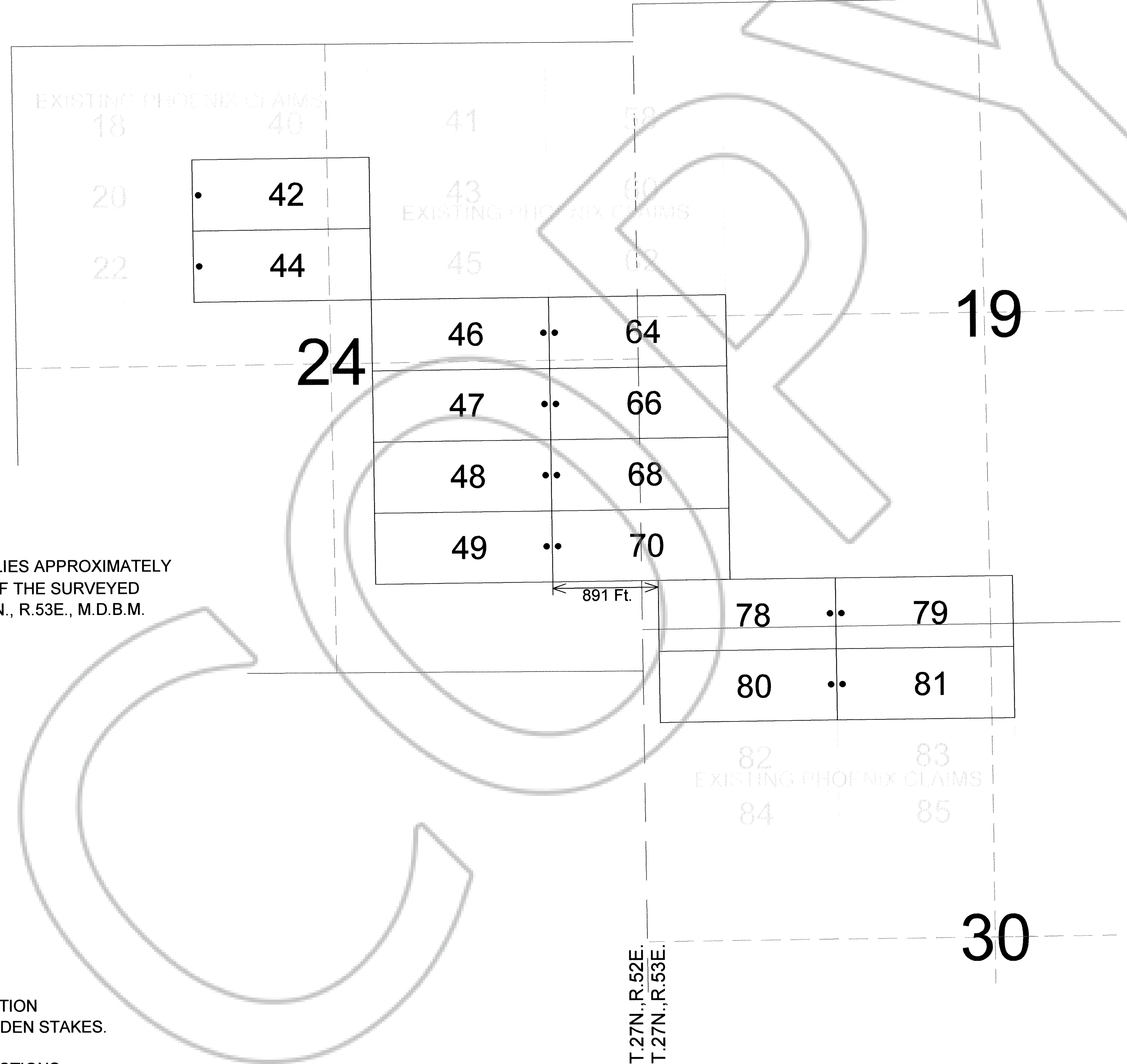
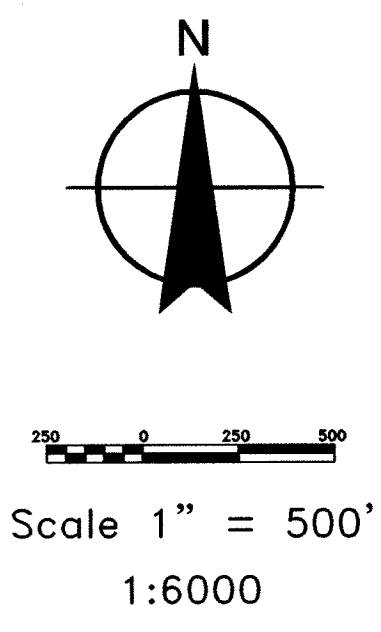
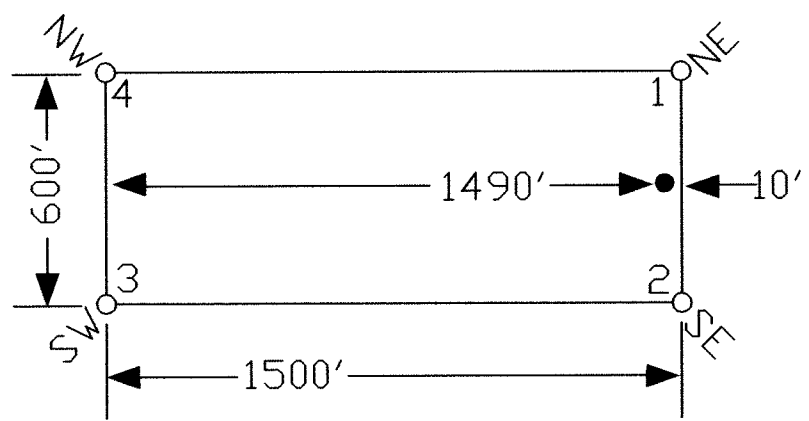


TYPICAL CLAIM



LOCATION DATES:
 November 18, 2015: Phoenix 78-81
 November 19, 2015: Phoenix 64, 66, 68, 70
 November 24, 2015: Phoenix 42, 44, 46-49

TIE POINT DATA:
 THE SOUTHEAST CORNER OF PHOENIX 81 LIES APPROXIMATELY
 2,792 FEET WEST AND 4,448 FEET NORTH OF THE SURVEYED
 SOUTHEAST CORNER OF SECTION 30, T.27N., R.53E., M.D.B.M.

DOC # 0230850
 02/01/2016 08:53 AM
Official Record
 RECORDING FURNISHED BY
 GARLIN TREND SPRING SERVICES
 Eureka County - NV
 Sara Simmons - Recorder
 Fee: \$214.00 Page: 1 of 1
 RPT: Recorded By: LH
 Book- Page- 0000

NOTES:
 LOCATION MONUMENTS SET 10' FROM CLAIM END
 CENTERLINES UNLESS NOTED ON MAP. ALL LOCATION
 MONUMENTS AND CLAIM POSTS ARE 2"x2"x4' WOODEN STAKES.
 DASHED SECTION LINES INDICATE PROJECTED SECTIONS.

 MINING SERVICES CarlinTrend Sampling • Staking • Surveying	369 - 5th STREET ELKO, NV 89801 PH: (775) 778-0668 FAX: (775) 778-0687	Locater: Golden Gryphon USA Inc. 1400 Tanager Place RR21, Roberts Creek, BC V0N 2W1 Phoenix Lode Claims T.27N., R.52&53E.; Eureka County, Nevada
	DATE: January 2016	ACAD FILE NAME: Phoenix 18-81.dwg PLOT SCALE: 1" = 500'