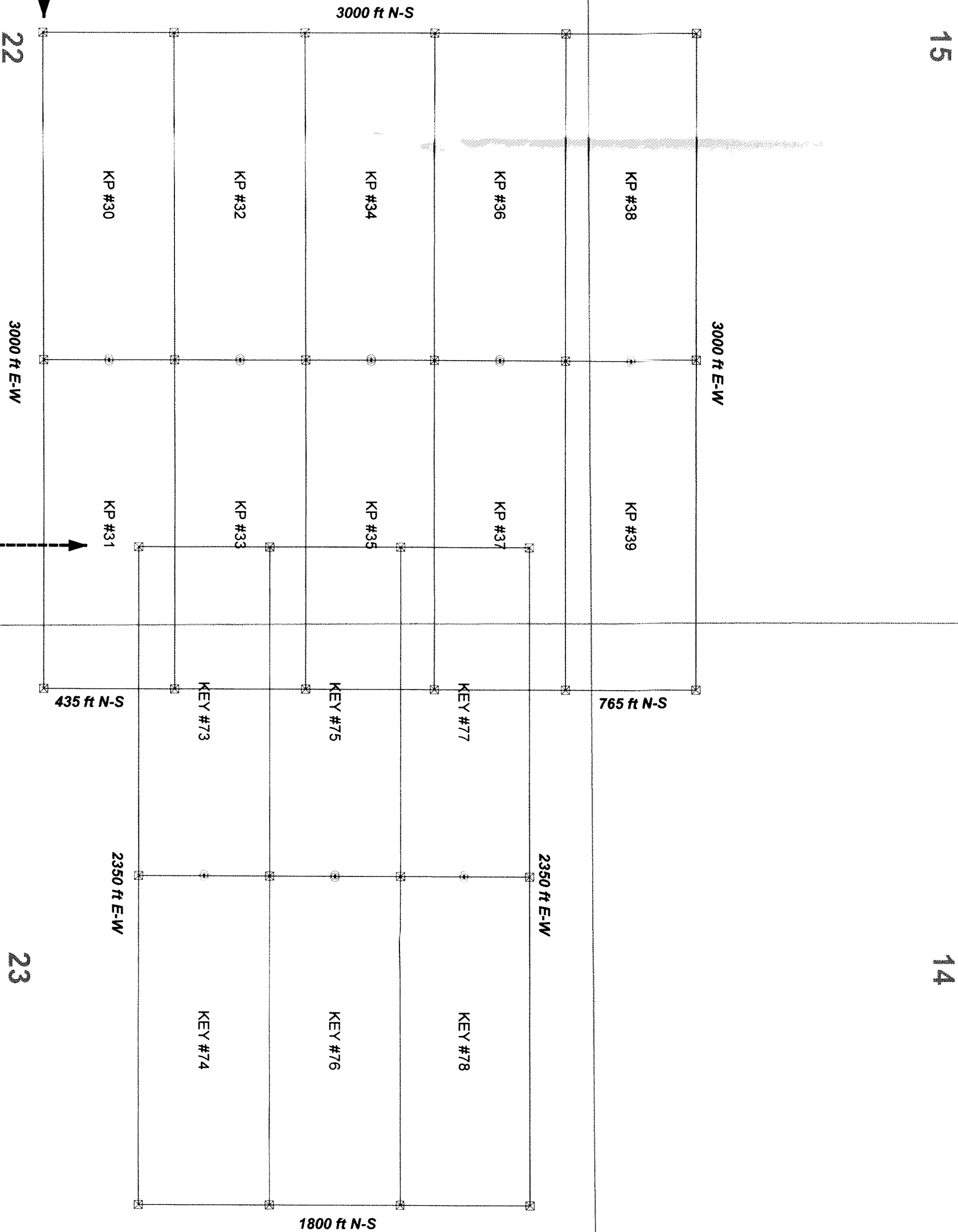
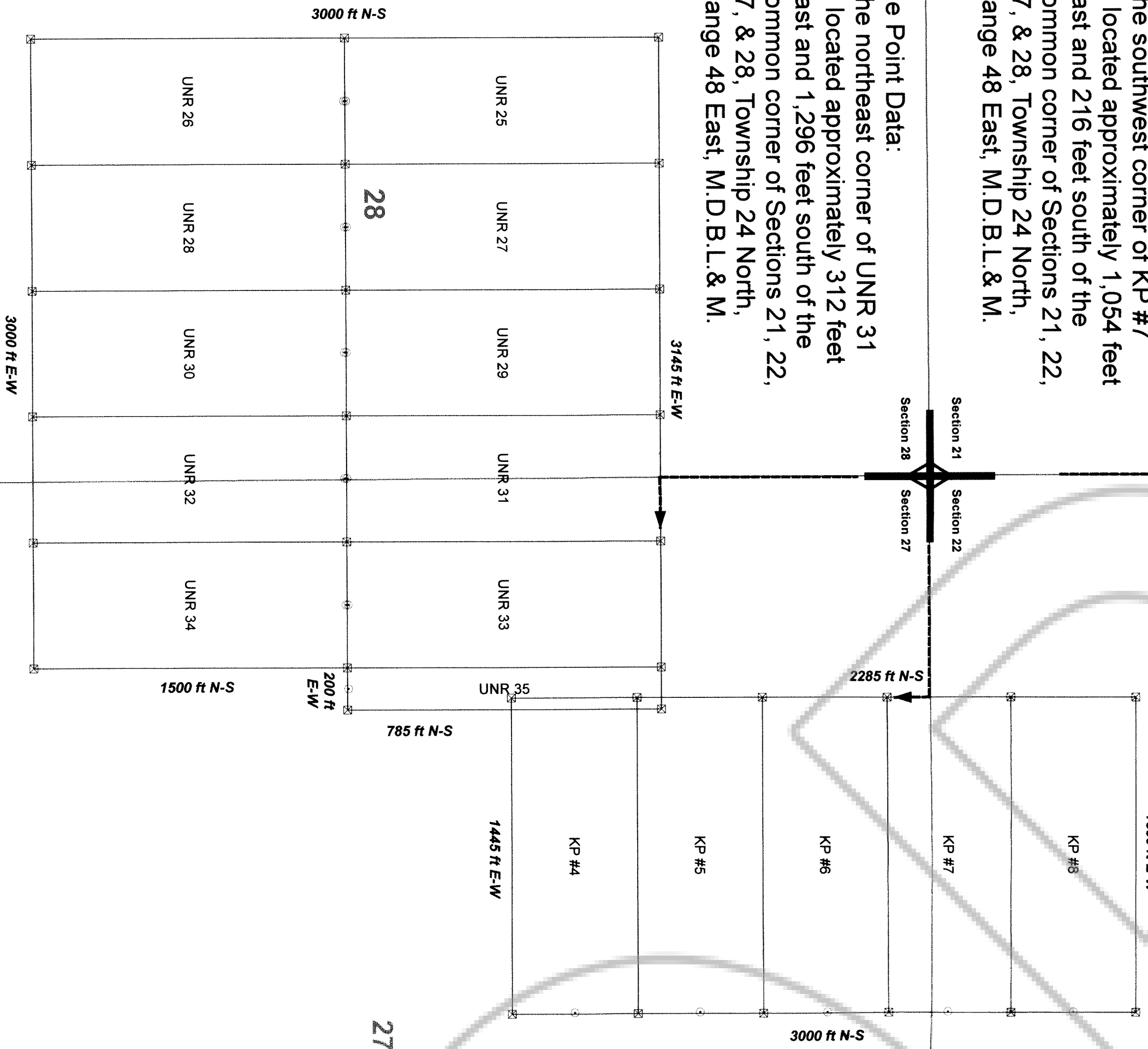


The Point Data:  
The southwest corner of KP #7  
is located approximately 1,054 feet  
east and 216 feet south of the  
common corner of Sections 21, 22,  
27, & 28, Township 24 North,  
Range 48 East, M.D.B.L. & M.

The Point Data:  
The northeast corner of UNR 31  
is located approximately 312 feet  
east and 1,296 feet south of the  
common corner of Sections 21, 22,  
27, & 28, Township 24 North,  
Range 48 East, M.D.B.L. & M.

The Point Data:  
The southwest corner of KP #30  
is located approximately 2,560 feet  
east and 2,817 feet north of the  
common corner of Sections 21, 22,  
27, & 28, Township 24 North,  
Range 48 East, M.D.B.L. & M.

The Point Data:  
The southwest corner of KEY #73  
is located approximately 4,914 feet  
east and 3,219 feet north of the  
common corner of Sections 21, 22,  
27, & 28, Township 24 North,  
Range 48 East, M.D.B.L. & M.



33

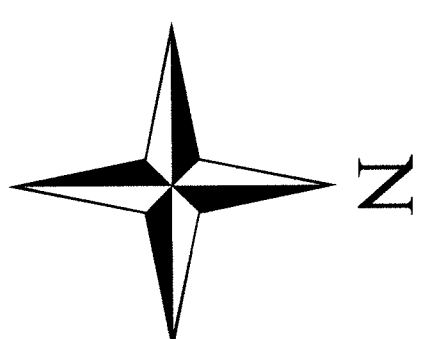
34

35

Location Dates:  
November 16, 2015: KP #4-8, KP #30-39, UNR 25-35  
November 17, 2015: KEY #73-78

Notes:  
KP, KEY, & UNR location monuments are set 5 feet from endline along centerline of claim unless otherwise noted.  
All location monuments are 2"x2"x4" wooden posts with scribed metal tags.  
All claims are 600' x 1500' unless otherwise noted.  
UNR 35 is 200' wide x 1500' long.

Nevada Gold Ventures, Inc.  
and  
Americas Gold Exploration, Inc.



UTM NAD83

1:6,000 1 inch = 500 feet



KP, KEY, & UNR  
Unpatented Lode  
Mining Claims

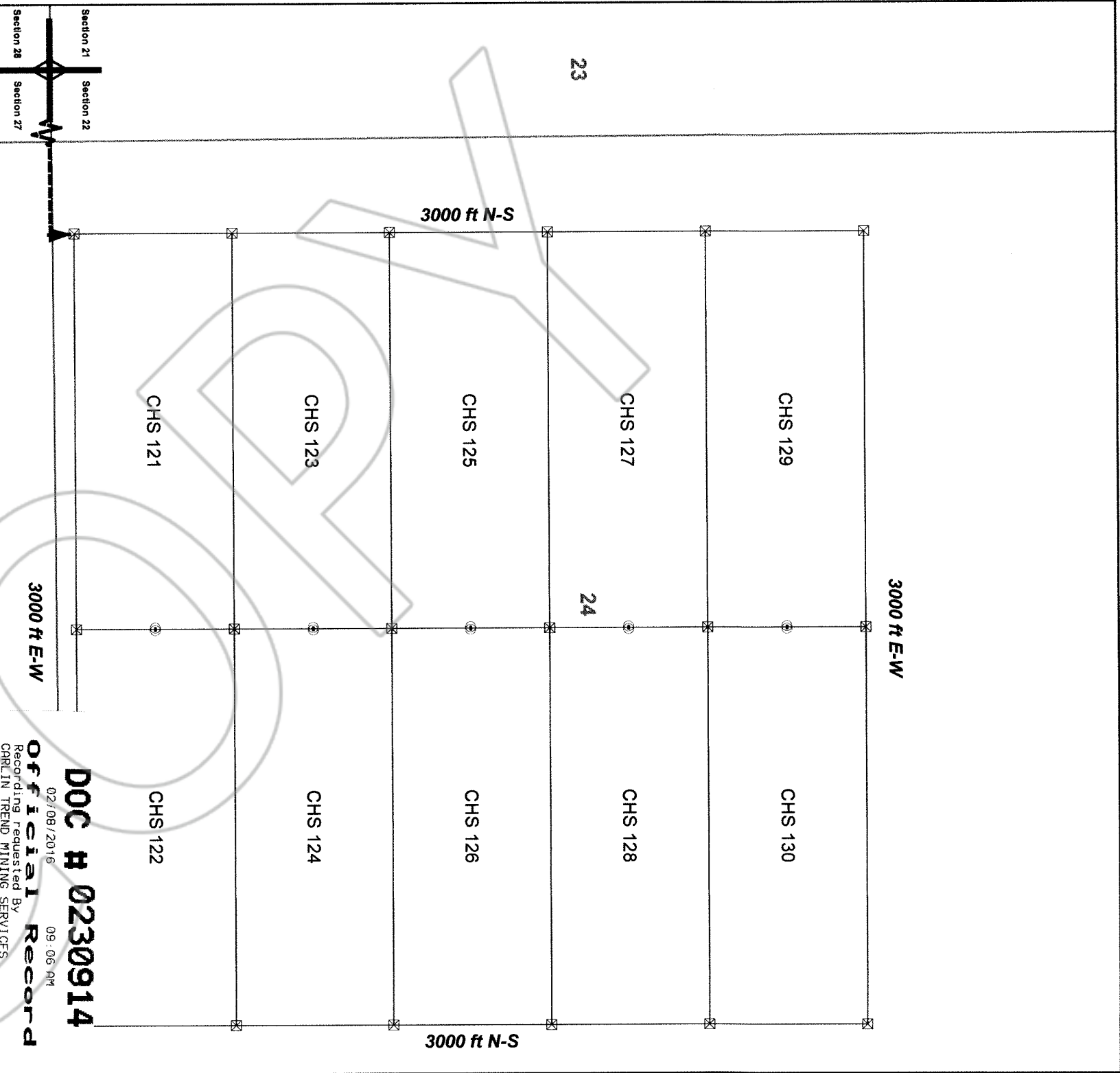
Co-Locators:  
Nevada Gold Ventures, Inc.  
205 South 11th St., PO Box 2092  
Elko, NV 89803

Americas Gold Exploration, Inc.  
8175 S. Virginia St., Ste#500 - PMB #348  
Reno, NV 89511

DOC # 0230914  
RECORDING INFORMATION SERVICES  
OFFICIAL RECORD  
Sara Simmons - Recorder  
Eureka County - NV  
Book- Page-  
Recorded By-  
Recorded On-  
0230914

Drawn by: HAW

Date: 30-Nov-2015



The Point Data:  
The southwest corner of CHS 121 is located approximately 10,909 feet east and 144 feet north of the common corner of Sections 21, 22, 27, & 28, Township 24 North, Range 48 East, M.D.B.L. & M.

DOC # 0230914

02/08/2016 09:06 AM

Official Record

Recording requested By  
CARLIN TREND MINING SERVICES

Eureka County - NV

Sara Simmons - Recorder

Fee: \$634.00

RPT: 1 of 1

Book- Page- 0000

Recorded By: SGS

0230914

Typical Claim

1500' N  
600' E  
1495'  
600' W  
1500' S  
5'  
1 2 3 4

Nevada Gold Ventures, Inc.  
and  
Americas Gold Exploration, Inc.

Location Date:  
November 17, 2015: CHS 121-130

Notes:  
CHS location monuments are set 5 feet from endline along centerline of claim unless otherwise noted.  
All location monuments are 2"x2"x4" wooden posts with scribed metal tags.  
All claims are 600' x 1500' unless otherwise noted.

Co-Locators:  
Nevada Gold Ventures, Inc.  
205 South 11th St.  
PO Box 2092  
Elko, NV 89803

Americas Gold Exploration, Inc.  
8175 S. Virginia St., Ste #500  
PMB #348  
Reno, NV 89511

CHS Unpatented  
Lode Mining Claims

Township 24 North, Range 48 East,  
Section 24  
Mt. Diablo Base Line and Meridian  
Eureka County, Nevada

Scale: 1 inch = 500 feet

0 500 1,000 1,500 Feet

UTM NAD83

Drawn by: HAW

Date: 30-Nov-2015