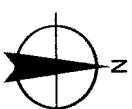


NOTES:

LOCATION MONUMENTS SET 10' FROM CLAIM END
CENTERLINES UNLESS NOTED ON MAP. ALL LOCATION
MONUMENTS AND CLAIM POSTS ARE 2"x2"x4' WOODEN STAKES.
DASHED SECTION LINES INDICATE PROJECTED SECTIONS.

25



Scale 1" = 500'

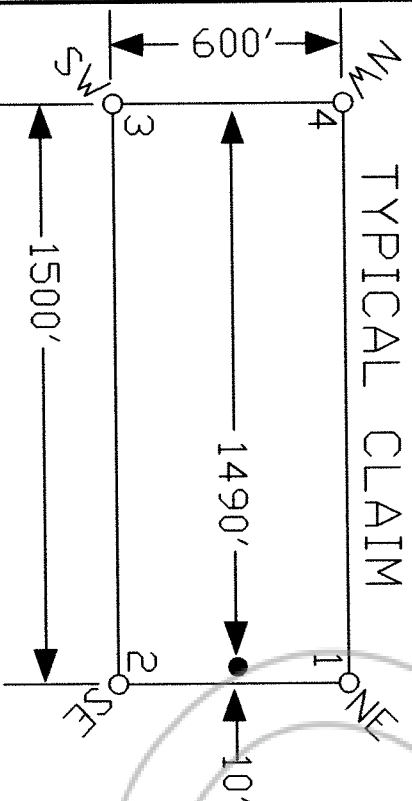
1:6000

1179	.
1180	.
1181	.
1182	.

WTC 123
WTC 128
WTC 127
EXISTING WTC CLAIMS

36

TYPICAL CLAIM



LOCATION DATES:

November 12, 2015: Phoenix 1179-1182

TIE POINT DATA:
THE SOUTHEAST CORNER OF PHOENIX 1182 LIES APPROXIMATELY
7,740 FEET WEST AND 2,960 FEET NORTH OF THE SURVEYED
SOUTHEAST CORNER OF SECTION 31, T.26N., R.53E., M.D.B.M.

DOC # 0230952

02/08/2016

09:32 AM

Official Record

Recording requested By

CARLIN TREND MINING SERVICES

Eureka County - NV

Sara Simmons - Recorder

Fee: \$64.00

Page 1 of 1

RPRT:

Recorded By: SGS

Book-

Page-



0230952



Golden Gryphon USA Inc.
1400 Tompger Place Bldg. 201, Roberts Creek, BC V0N 2W1
Phoenix 1179-1182 Lode Claims
T.26N., R.52E.: Eureka County, Nevada

369 - 516 STREET
BLDG 201 NV 89601
PHN (775) 779-0606 FAX (775) 779-0607

RECORDED
FEBRUARY 2016
1:50 PM