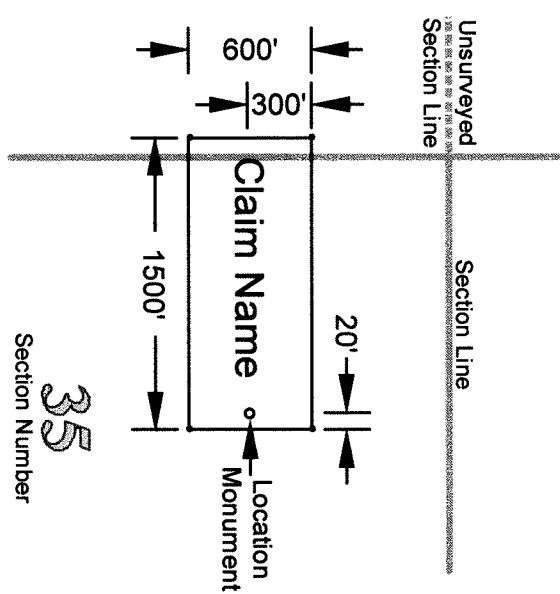


Typical Lode Mining Claim
Not To Scale



NOTES

- Claims located by:
Basin And Range Resources, L.L.C.
1815 E. Winsett St.
Tucson, AZ 85719
- Claims located April 8, 2016
- These claims are located in Sections
1-3, 10-11, T 31N R 49E, and
Sections 34-36, T 32N R 49E,
Mount Diablo Base and Meridian,
Eureka County, Nevada
- The corner and location monuments
are made of 1.5" x 1.5" x 4" wooden
posts marked with aluminum tags
- Each claim is 1500' x 600' except
where noted on this map
- NE corner of sec. 1, T 31N R 49E
is N 80.78° E 5,272 ft from the
NE corner of TR 18
- Township and section lines were adapted
from Bureau of Land Management's
Public Land Survey System GIS data
and used to determine any private parcel
boundaries. All attempts were made to
place monuments on any private boundary
lines without entry or location on lands
not open to entry.
- Map is grid north.

This space for County Recorder

DOC # 0231646

07/05/2016 03:13 PM

Official Record

Basin & Range Resources, LLC

Eureka County - NV

Sara Simmons - Recorder

Page 1 of 1

Recorded By: LH

Book - 0000



0231646

Basin and Range Resources, L.L.C.
1815 E. Winsett St. Tucson, AZ 85719
Office: 520.624.4153 Fax: 520.624.4192

