

35

36

31

8100' E-W

T29N
T28N

MZB 1	MZB 9	MZB 29	MZB 30	MZB 69	MZB 70
	MZB 10	MZB 31	MZB 32	MZB 71	MZB 72
	MZB 11	MZB 33	MZB 34	MZB 73	MZB 74
MZB 2	MZB 12	MZB 35	MZB 36	MZB 75	MZB 76
	MZB 13	MZB 37	MZB 38	MZB 77	MZB 78
	MZB 14	MZB 39	MZB 40	MZB 79	MZB 80
MZB 3	MZB 15	MZB 41	MZB 42	MZB 81	MZB 82
	MZB 16	MZB 43	MZB 44	MZB 83	MZB 84
	MZB 17	MZB 45	MZB 46	MZB 85	MZB 86
MZB 4	MZB 18	MZB 47	MZB 48	MZB 87	MZB 88
	MZB 19	MZB 49	MZB 50	MZB 89	MZB 90
	MZB 20	MZB 51	MZB 52	MZB 91	MZB 92
MZB 5	MZB 21	MZB 53	MZB 54	MZB 93	MZB 94
	MZB 22	MZB 55	MZB 56	MZB 95	MZB 96
	MZB 23	MZB 57	MZB 58	MZB 97	MZB 98
MZB 6	MZB 24	MZB 59	MZB 60	MZB 99	MZB 100
	MZB 25	MZB 61	MZB 62	MZB 101	MZB 102
	MZB 26	MZB 63	MZB 64	MZB 103	MZB 104
MZB 7	MZB 27	MZB 65	MZB 66	MZB 105	MZB 106
	MZB 28	MZB 67	MZB 68	MZB 107	MZB 108
	MZB 29	MZB 69	MZB 70	MZB 109	MZB 110

12,000' N-S

12,000' N-S

EUREKA COUNTY
ELKO COUNTY

Found Section Corner

Found 1/4 Corner

8100' E-W

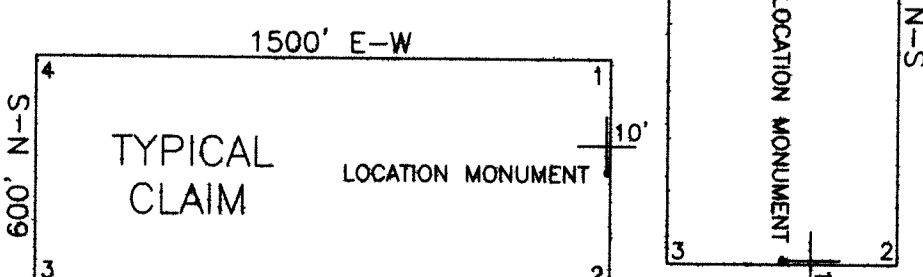


0 500 1000

SCALE
U.S. Survey Foot
Sections projected using
Nevada BLM GCDB

CLAIM LOCATION DATES:
 July 27, 2016: MZB 1-4, 9-16, 29-38, 69-84
 July 28, 2016: MZB 5-8, 17-28, 39-68, 85-108
 July 29, 2016: MZB 109-123, 142-158, 163-174
 July 30, 2016: MZB 132-133, 136-141, 159-162, 175-200, 211-214
 July 31, 2016: MZB 124-131, 134-135, 201-210
 August 1, 2016: MZB 215-221

DOC # 0232065
 10/10/2016 09:30 AM
Official Record
 Recording Requested By
 NEWMONT USA LTD
 Eureka County - NV
 Lisa Hoehne - Recorder
 Fee: \$589.00 Page 1 of 1
 SPTT: Recorded By: LH
 Book: Page:



ALL CLAIMS ARE 1500' x 600' UNLESS OTHERWISE NOTED.
 ALL MONUMENTS ARE 2" x 2" x 4" WOODEN POSTS.
 LOCATION MONUMENTS ARE SET 10' INSIDE CLAIM BOUNDARY
 UNLESS OTHERWISE NOTED.

TIE POINTS:
 The NE corner of MZB 48 is located approximately
 189 feet north and 202 feet west of the NW corner
 of Section 7, T28N, R53E, M.D.M.

LODE MINING CLAIM MAP
MZB 1-221
 T28-29N, R52-53E, M.D.M.
 ELKO & EUREKA COUNTIES, NEVADA

Locator: **NEWMONT USA LIMITED**
 1655 MOUNTAIN CITY HIGHWAY
 ELKO, NEVADA 89801

Drawn By: ARD August 2016 Sheet 1 of 3