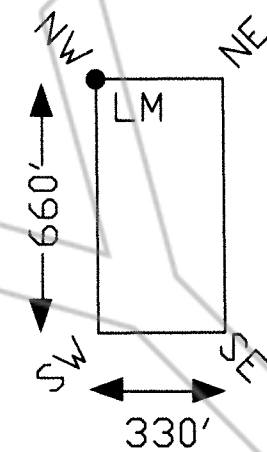
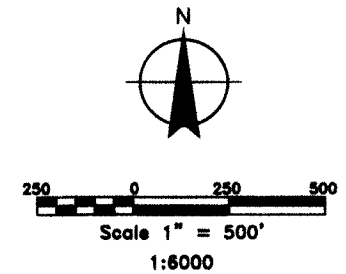


TYPICAL CLAIM



Approx.
5 Acres



LOCATION DATES:
September 19, 2016: Monty 1-12

TIE POINT DATA:

MILL SITES ARE TIED TO QUARTER SECTIONS, T.19N., R.48E., SECTIONS 23 & 24, M.D.B.M., AS INDICATED ON MAP.

NOTES:

ALL CLAIM POSTS ARE 2"x2"x4' WOODEN STAKES.
ALL LOCATION MONUMENTS ARE LOCATED AT THE NORTHWEST CORNER OF THE CLAIM.

DOC # 0232100

10/20/2016 02:07 PM

Official Record

Recording requested By
CARLIN TREND MINING SERVICES

Eureka County - NV

Lisa Hoehne - Recorder

Fee: \$184.00 Page 1 of 1

RPTT: Recorded By: LH

Book- Page-



	Locator: Halliburton Energy Services, Inc. 912 Dunphy Ranch Rd., Battle Mountain, Nevada 89820-9500 Monty 1-12 Millsites T.19N., R.48E.; Eureka County, Nevada	
	DATE: October 2018	DRAWN BY: orna
369 - 5th STREET PH: (775) 778-0668 ELKO, NV 89801 FAX: (775) 778-0687	RECORD FILE NAME: 0232100.dwg PLOT SCALE: 1" = 500'	