

33

34

T23N R50E
T22N R50E

4

3

GPN 1
GPN 2
GPN 3
GPN 4

The SE Corner of GPN 4 bears
N42°09'W and is 15,829'
from the NW corner of Section 24
~~T22N R50E~~

9

10

"GPN" lode claims 1-4 were located on September 29, 2016 in
Sections 3 & 4, Township 22 North, Range 50 East in
Eureka County, Nevada, MDB&M.

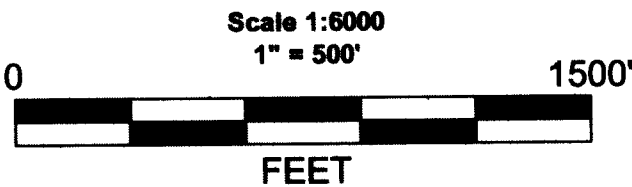
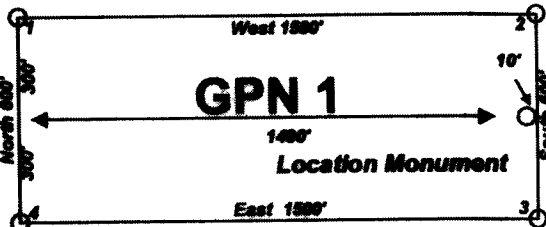
Location Map for
GPN 1-4 Lode Claims
Sheet 1 of 1

Locator:
WHITE KNIGHT GOLD (U.S.) INC.
2215 N 5TH ST
ELKO, NV 89801-2458



Notes:
Location Monuments are set 10' from
claim end lines unless noted otherwise.
All location and corner monuments are
2" X 2" X 4' wooden posts with scribed
metal tags. All claims are 600' by 1500'
unless noted otherwise.

Typical Claim



Location Map for GPN 1-4 Lode Claims Sheet 1 of 1
WHITE KNIGHT GOLD (U.S.) INC. 2215 N 5TH ST ELKO, NV 89801-2458
GPN 1-4 Claims N27Z11ft October 14, 2016
Datum: 1927 Projection: UTM Zone 11 Units: Feet

DOC # 0232232

11/10/2016 02:31 PM
Official Record
Recording requested by:
WHITE KNIGHT GOLD (U.S.) INC.
Eureka County - NV
Lisa Hoelme - Recorder
Fee: \$64.00 Page 1 of 1
RPTT: Recorded By: CH
Book-- Page-- 0000