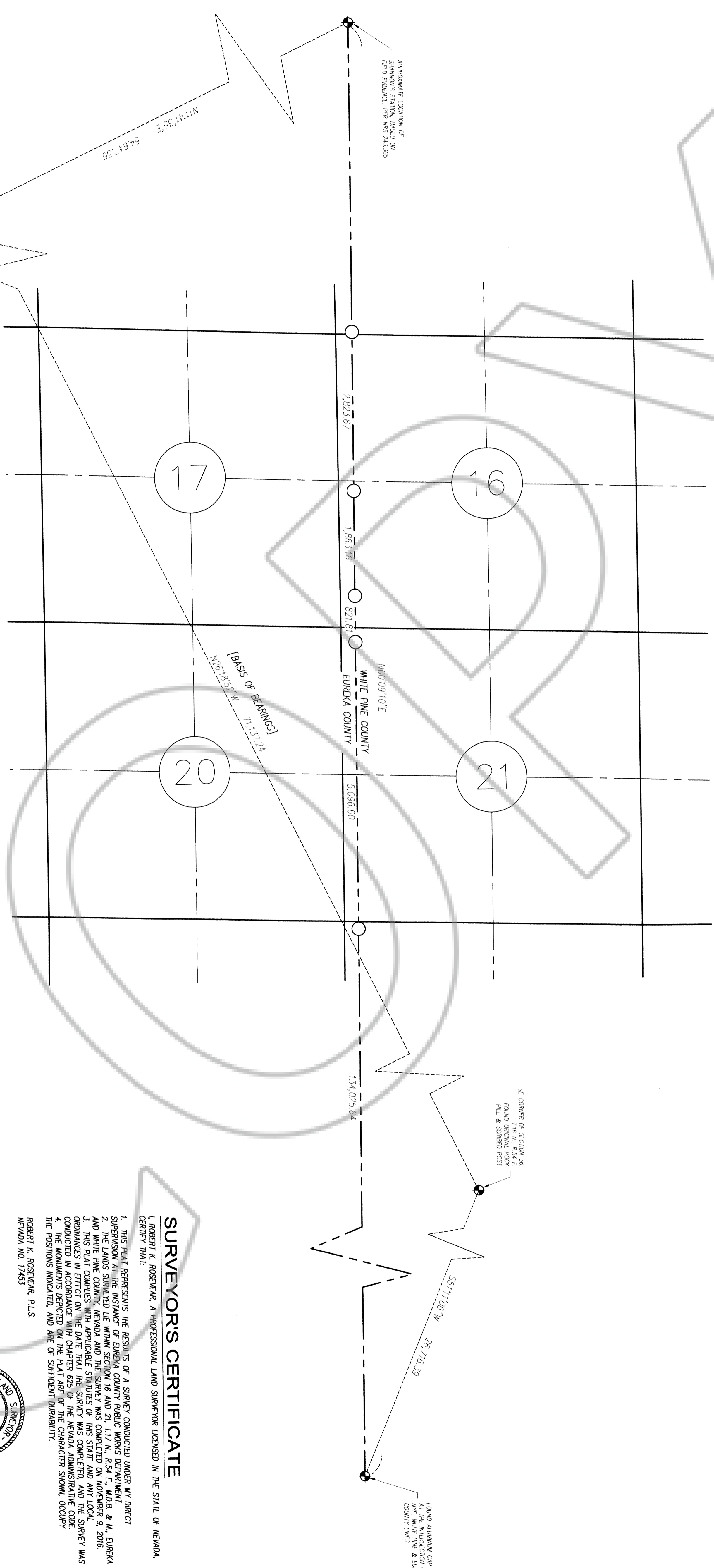


SECTIONS 16 & 21, T.17 N., R.54 E., M.D.B. & M.
EUREKA & WHITE PINE COUNTY



NOTES

- SECTION LINES ARE BASED FROM THE BLM'S GEOGRAPHIC COORDINATE DATA BASE. NO SECTION CORNERS EXIST OR WHERE FOUND AT THE SUBJECT PROPERTY, ALTHOUGH SEVERAL CORNERS WERE FOUND ALONG THE TOWNSHIP AND RANGE LINES THAT FIT RECORD POSITIONS.
- THIS MAP DOES NOT DINGE ANY LAND FOR TRANSFER AND IS NOT IN CONFLICT WITH NRS 278.010 TO NRS 278.630.

BASIS OF BEARINGS

THE BASIS OF BEARINGS FOR THIS MAP IS BASED ON STATE PLANE COORDINATES. THE COORDINATE SYSTEM USED IS THE NAD 83 SYSTEM. THE CORNER OF SECTION 6, R.54 E. AND THE SE CORNER OF SECTION 36, T.16 N., R. 54 E.

REFERENCES

- NEVADA PROTRACTOR DIAGRAM, T. 16 & 17 N., R.54 & 55 E., T. 18 N., R. 55 E. FILED FEBRUARY 1, 1963.

LEGEND

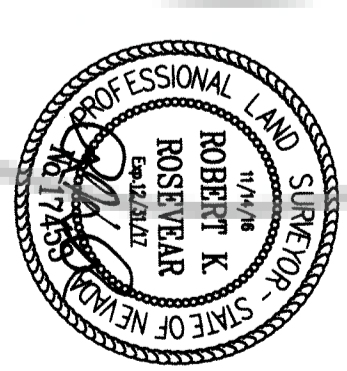
- = MONUMENT SET: 3-1/2" ALUM. CAP STAMPED "EUREKA/WHITE PINE COUNTY PLS 17453" SET IN CONCRETE.
- ⊕ = FOUND MONUMENT AS NOTED

SURVEYORS CERTIFICATE

I, ROBERT K. ROSEWEAR, A PROFESSIONAL LAND SURVEYOR LICENSED IN THE STATE OF NEVADA, CERTIFY THAT:

- THIS PLAT REPRESENTS THE RESULTS OF A SURVEY CONDUCTED UNDER MY DIRECT SUPERVISION AT THE REQUEST OF EUREKA COUNTY PUBLIC WORKS DEPARTMENT.
- THE LARGEST COUNTY IN NEVADA AND THE SURVEY WAS COMPLETED ON NOVEMBER 9, 2016.
- THIS PLAT COMPLES WITH APPLICABLE STATUTES OF THIS STATE AND ANY LOCAL ORDINANCES IN EFFECT ON THE DATE THAT THE SURVEY WAS COMPLETED, AND THE SURVEY WAS CONDUCTED IN ACCORDANCE WITH CHAPTER 625 OF THE NEVADA ADMINISTRATIVE CODE.
- THE MONUMENTS DEPICTED ON THE PLAT ARE OF THE CHARACTER SHOWN, OCCUPY THE POSITIONS INDICATED, AND ARE OF SUFFICIENT DURABILITY.

ROBERT K. ROSEWEAR, P.L.S.
NEVADA NO. 17453



RECORD OF SURVEY

FOR
EUREKA COUNTY PUBLIC WORKS DEPARTMENT
SECTIONS 16 & 21, T.17 N., R.54 E., M.D.B. & M.
EUREKA & WHITE PINE COUNTY, NEVADA

FILED AT THE REQUEST OF
BASIN ENGINEERING
DOC # 02322239
11/10/2016
01:13 PM
Official Record
Submitted and Recorded By
Lisa Heaune - Recorder
Eureka County - NV
Book- Page-
Recorded By: CH

B Basin Engineering
Consulting Engineers & Land Surveyors
1070 E. Adams Street, Ste. 101, NV 89301
Phone: (775) 289-9900 Fax: (775) 289-9902

JOB#: 1810046