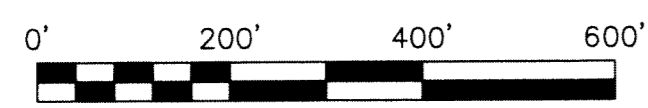


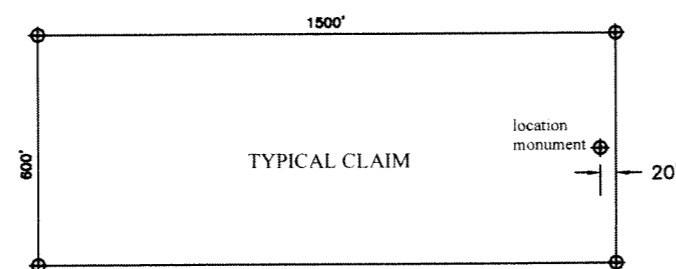
TOWNSHIP 20 NORTH
RANGE 51 EAST



LEGEND

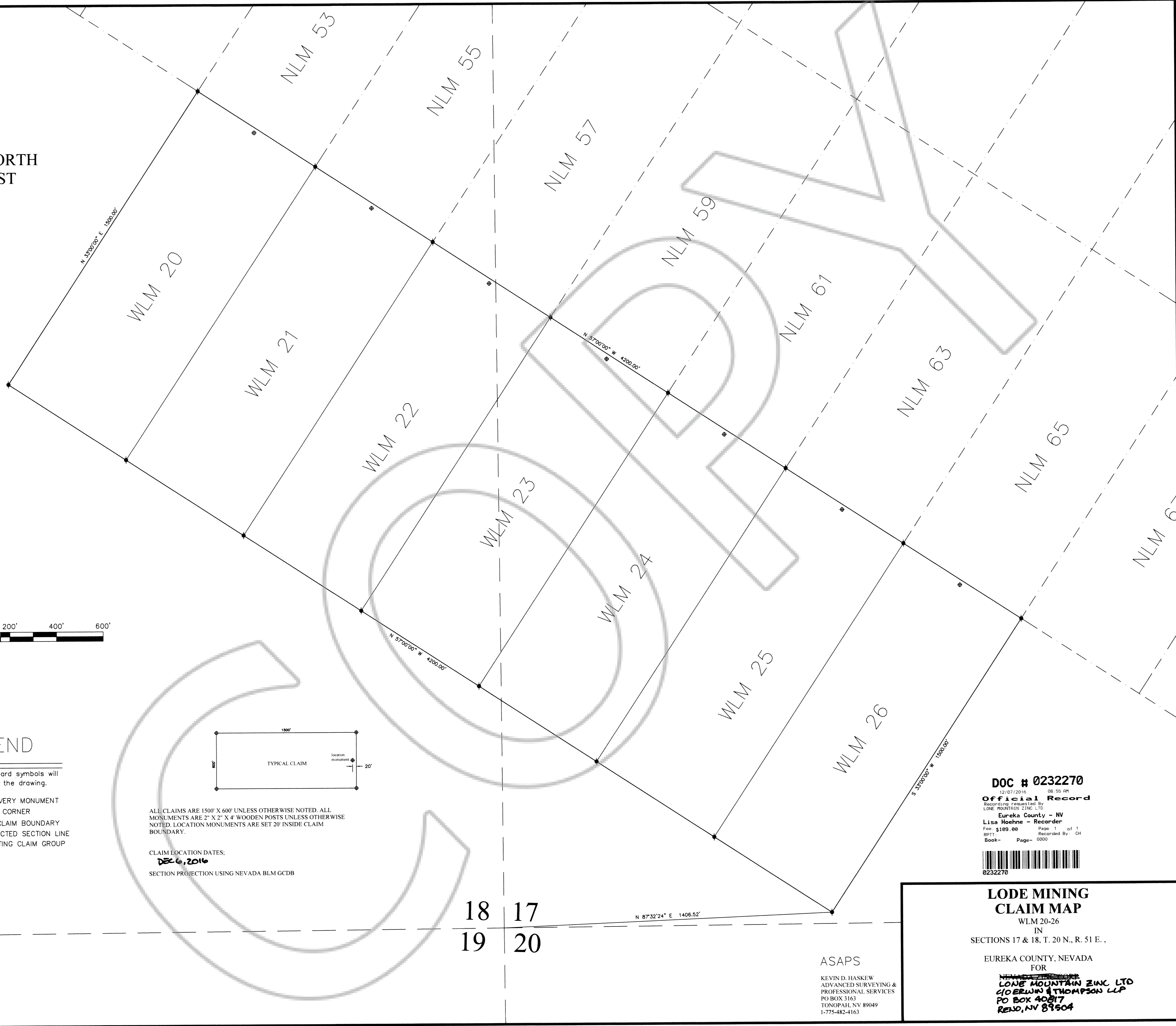
These standard symbols will be found in the drawing.

- ⊕ DISCOVERY MONUMENT
- ◆ CLAIM CORNER
- NEW CLAIM BOUNDARY
- - - PROJECTED SECTION LINE
- - - EXISTING CLAIM GROUP



ALL CLAIMS ARE 1500' X 600' UNLESS OTHERWISE NOTED. ALL MONUMENTS ARE 2" X 2" X 4" WOODEN POSTS UNLESS OTHERWISE NOTED. LOCATION MONUMENTS ARE SET 20' INSIDE CLAIM BOUNDARY.

CLAIM LOCATION DATES:
DEC 6, 2016
SECTION PROJECTION USING NEVADA BLM GCDB



DOC # 0232270

12/07/2016 09:55 AM
Official Record
Recording requested by:
LODE MOUNTAIN ZINC LTD
Eureka County - NV
Lisa Hoehne - Recorder
Fee: \$109.00 Page: 1 of 1
RP17 Recorded By: CH
Book-- Page-- 0000



0232270

**LODE MINING
CLAIM MAP**
WLM 20-26
IN
SECTIONS 17 & 18, T. 20 N., R. 51 E.,

EUREKA COUNTY, NEVADA
FOR
~~NEW MOUNTAIN ZINC LTD~~
LODE MOUNTAIN ZINC LTD
C/O BREWIN & THOMPSON LLP
PO BOX 40817
RENO, NV 89504

ASAPS

KEVIN D. HASKIEW
ADVANCED SURVEYING &
PROFESSIONAL SERVICES
PO BOX 3163
TONOPAH, NV 89049
1-775-482-4163

18 17
19 20