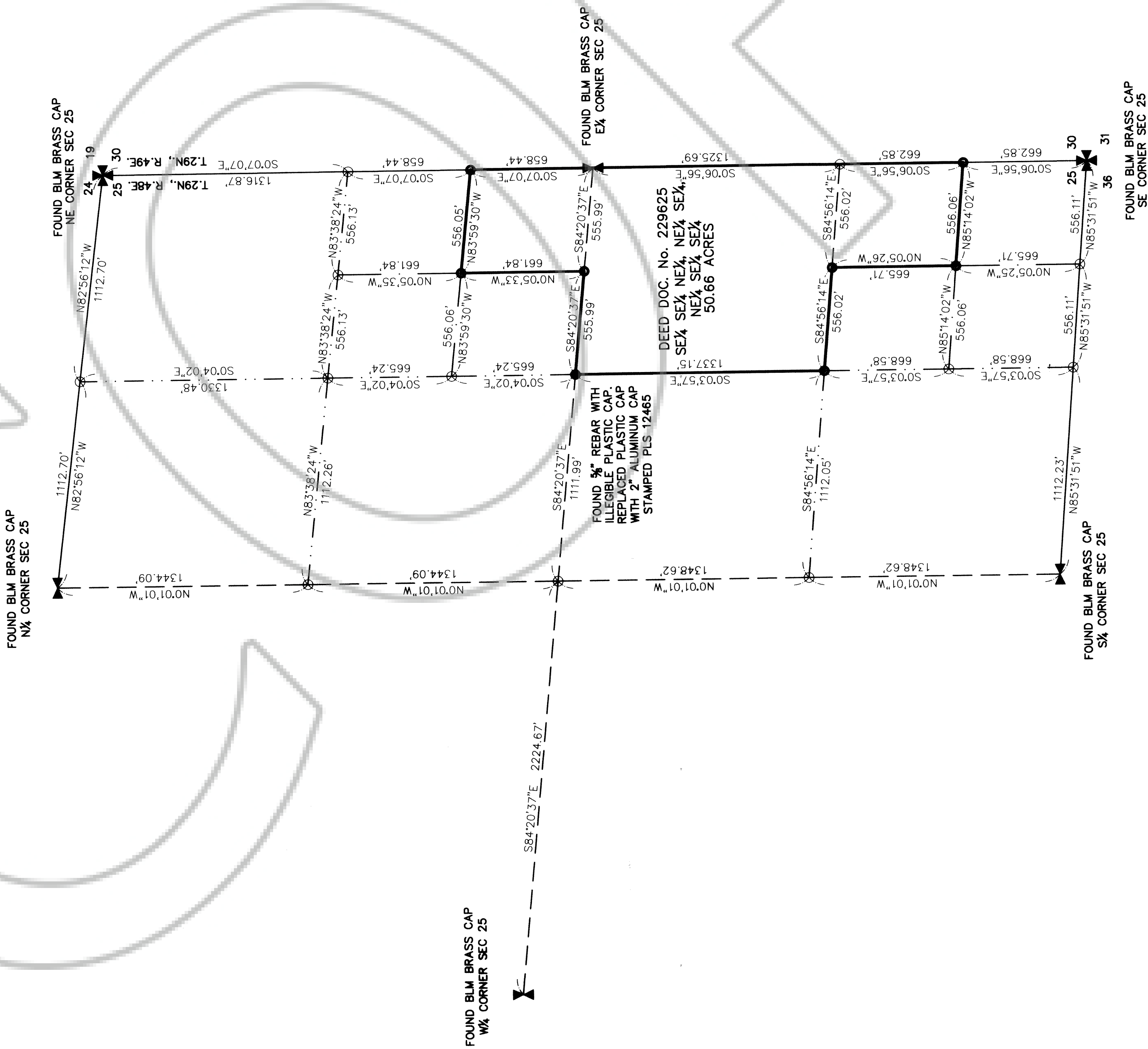


LEGEND

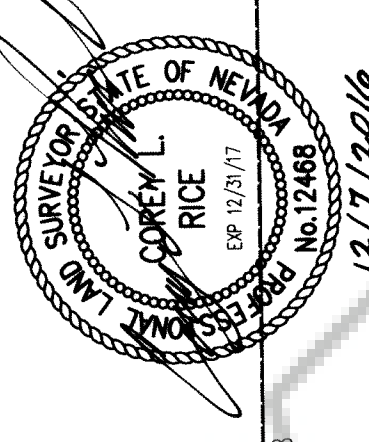
- ✱ FOUND BLM BRASS CAP SECTION CORNER.
- ✱ FOUND BLM BRASS CAP 1/4 SECTION CORNER.
- SET 3/8" REBAR AND 2" ALUM. CAP STAMPED PLS 12468.
- CALCULATED POINT NOT FOUND OR SET.
- FOUND POINT AS DESCRIBED
- PROPERTY LINE
- SECTION LINE
- - - 1/4 SECTION LINE
- - - 1/8 SECTION LINE
- - - 1/16 SECTION LINE



SURVEYOR'S CERTIFICATE

I, COREY L. RICE, A PROFESSIONAL LAND SURVEYOR LICENSED IN THE STATE OF NEVADA, CERTIFY THAT:

- THIS PLAT REPRESENTS THE RESULTS OF A SURVEY CONDUCTED UNDER MY DIRECT SUPERVISION AT THE INSTANCE OF CLINTON J. SCHUE, M.D.B.&M., EUREKA COUNTY, NEVADA AND THE SURVEY WAS COMPLETED ON JULY 6, 2016.
- THE LANDS SURVEYED LIE WITHIN SECTION 25, T.29N., R.48E., M.D.B.&M., EUREKA COUNTY, NEVADA AND THE SURVEY WAS COMPLETED ON JULY 6, 2016.
- THE MONUMENTS DEPICTED ON THE PLAT ARE OF THE CHARACTER SHOWN, AND OCCUPY THE POSITIONS INDICATED AND ARE OF SUFFICIENT NUMBER AND DURABILITY.



COREY L. RICE, P.L.S. 12468
12/7/2016

RECORDER'S DATA
DOC # 0232280
 CLINTON J. SCHUE
 BLI 01 PM
Official Record
 Recorded & Indexed by
 Lisa Hoehne - Recorder
 Eureka County - NV
 Fee: \$21.00
 Page: 1 of 1
 Recorded by: CL
 Book: 0232280

RECORD OF SURVEY
 OF
 PORTION OF LAND DESCRIBED IN SPECIAL WARRANTY DEED
 DOCUMENT NUMBER 229625
 SECTION 25, T.29N., R.48E., M.D.B.&M.
 LOCATED IN EUREKA COUNTY, NEVADA
 FOR
 CLINTON J. SCHUE

FARR WEST ENGINEERING
 (775) 738-2121 421 Court Street Elko, Nevada 89801

CHILTON
 DRAWING NO. 16019

COUNTY RECORDER