

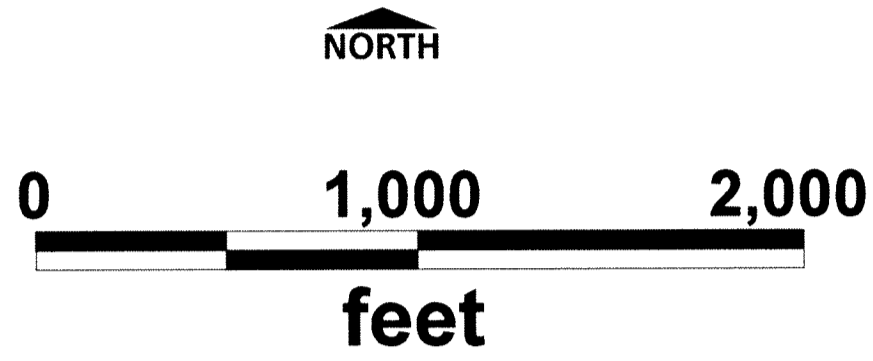
DOC # 0232392

01/13/2017 02:48 PM
Official Record
Recorded by: Eureka County - NV
Lisa Hoehne - Recorder
Fee: \$679.00 Page: 1 of 1
09/11 Recorded By: GH
Book: Page:



Diamond Point Lode Claims
DP-18, DP-19, DP-29, DP-30, DP-31, DP-32,
DP-33 through DP-52, DP-116 through DP-145,
in Sections 13, 14, 23, 24, 26 and 27 of T26N, R54E
Mount Diablo Base & Meridian (MDB&M)
Unknown Mining District
Elko & Eureka County, Nevada
1" = 500 feet
UTM WGS84, Zone 11
Renaissance Exploration, Inc.
4750 Longley Lane, Suite 106
Reno, NV 89502

MAP 1



Township & section information
from GCDB for Elko County, NV

Tie point is approximately 2628'
in a S2E direction from
the common corner
of Sections 14, 15, 22, 23, T26N, R54E
to the NW corner of claim DP-033

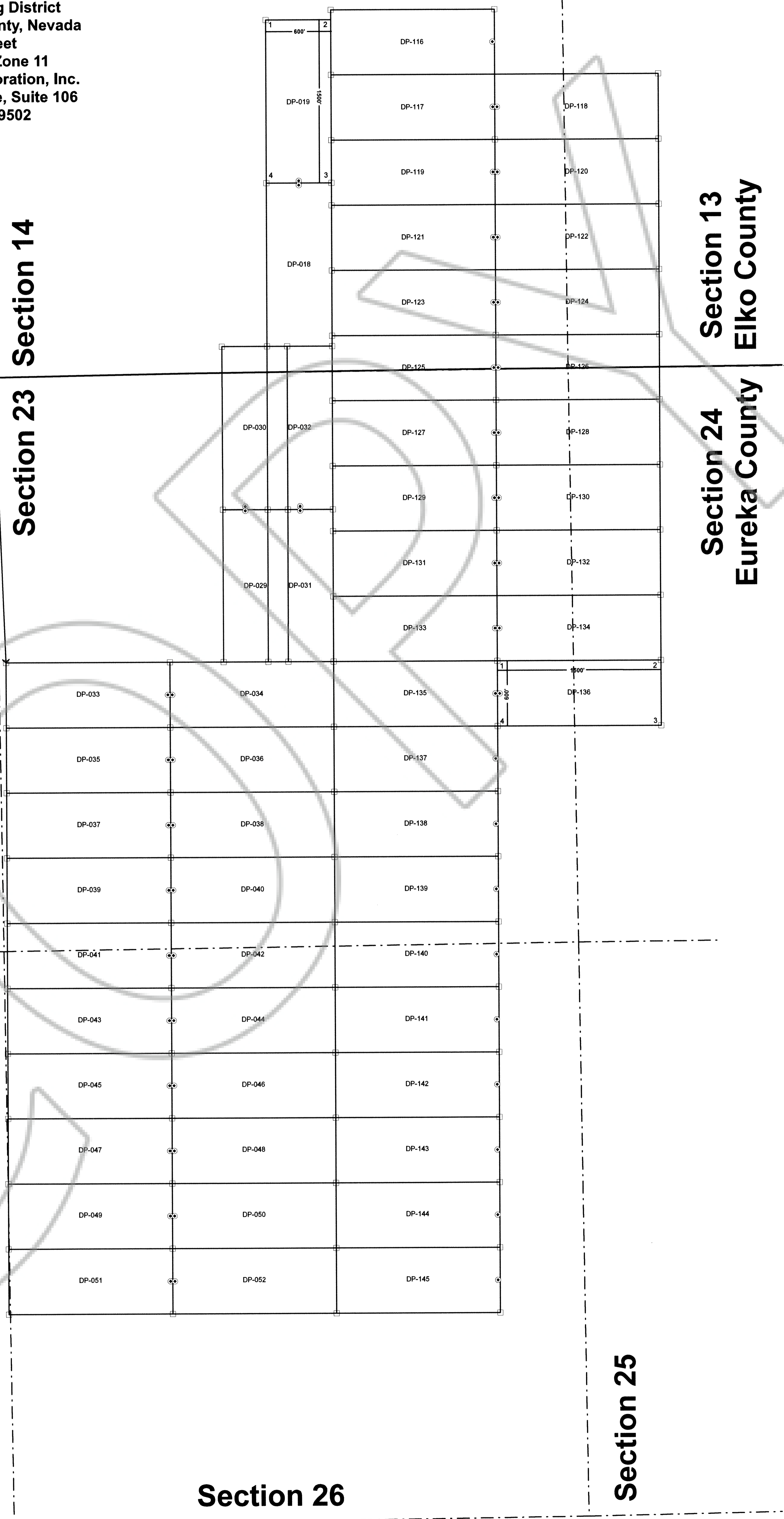
Map of the Diamond Point (DP) Lode Claim Group
Section 13, 14, 23, 24, 26, and 27
T26N R54E
Elko and Eureka County, Nevada

DP-49 through DP-86 located on
October 27, 2016 by Seth Saunders
DP-121 through DP-148 located on
October 27, 2016 by Dan Pace

DP-31 through DP-48 and DP-87 through DP-102
located on October 28, 2016 by Seth Saunders
DP-18, DP-19, DP-29, DP-30 and DP-116 through DP-120
located on October 28, 2016 by Dan Pace

Dan Pace and Seth Saunders,
agents for Renaissance Exploration, Inc.
Renaissance Exploration, Inc.
4750 Longley Ln, Suite 106
Reno, NV 89502

- Elko - Eureka County Line
 - - - Section line, based on NV GCDB
 - Claim corner 2" by 2" wooden post
 - Location monument 2" by 2" wooden post. Offset 20' from claim end line and 300' either side line.
- All claims 1500' long by 600' wide, except:
- DP-29 and DP-30 which are 450' wide and 1500' long with the location monument located 20' from the claim end line and 225' from either side line.



Section 13
Elko County

Section 24
Eureka County

Section 15

Section 22

Section 14

Section 23

Section 27

Section 26
T26N R54E

Section 25