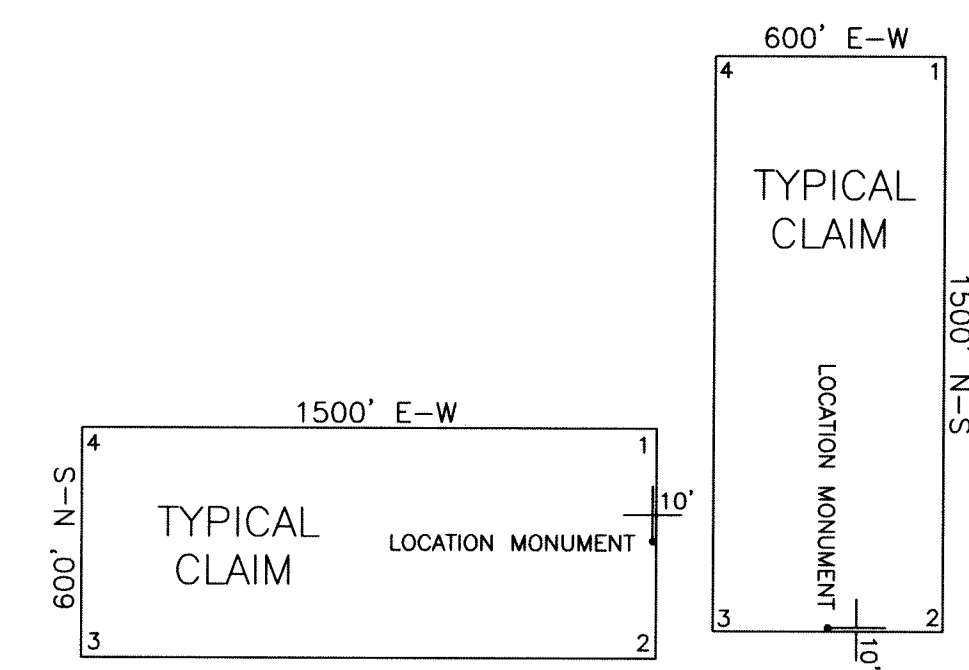


CLAIM TIE POINT:
The NE corner of PBX 30 is located approximately
6411 feet south and 9980 feet east of the NW
corner of Section 7, T28N, R53E, M.D.M.

CLAIM LOCATION DATES:
December 3, 2016: PBX 141-144, 149
December 4, 2016: PBX 1-22, 39-66
December 5, 2016: PBX 23-30, 67-100
December 6, 2016: PBX 31-38, 118-121, 130-136, 161-162
December 7, 2016: PBX 110-117, 124, 127-129, 150-160
December 11, 2016: PBX 101-109, 122-123, 125-126, 137-140, 145-148, 163-167

0 500 1000
SCALE
U.S. Survey Foot
Sections projected using
Nevada BLM GCDB



ALL CLAIMS ARE 1500' x 600' UNLESS OTHERWISE NOTED.
ALL MONUMENTS ARE 2' x 2' x 4' WOODEN POSTS.
LOCATION MONUMENTS ARE SET 10' INSIDE CLAIM BOUNDARY
UNLESS OTHERWISE NOTED.

DOC # 0232656
02/27/2017 04:30 PM
Official Record
Recording requested by
HARRIS, THORSOL & FALLERS
Eureka County - NV
Lisa Hoehne - Recorder
Fee: \$319.00 Page: 1 of 1
RPTT Recorded By: GH
Book- Page- 0000



LODE MINING CLAIM MAP
PBX 1-167
T28-29N, R52-53E, M.D.M.
ELKO & EUREKA COUNTIES, NEVADA

Locator: Tacoma Exploration LLC
7852 Ivanhoe Avenue
La Jolla, California 92037

DRAWN BY: ARD JANUARY 2017 SHEET 2 OF 4