

SURVEYOR'S CERTIFICATE

I, Mark C. Boge, Nevada Professional Land Surveyor No. 6196, hereby certify to the following: This map represents the result of a survey performed under my supervision at the instance of Barrick Cortez Inc. The land surveyed lies within T.25-26N., R.50-51E., M.D.M., Eureka Co., Nevada. The survey was completed FEB. 20, 2017 and was conducted in accordance with Chapter 625 of the Nevada Administrative Code. The monuments are of the character and occupy the positions indicated and are of sufficient durability.

Mark C. Boge
 MARK C. BOGE, PLS 6196

BASIS OF BEARINGS

The Basis Of Bearings for this survey is NAD27 Nevada State Plane East Zone as determined by GPS Static Survey data processed via the National Geodetic Online Positioning User Service.

NOTES

- Ground distances shown are U.S. Survey foot units, computed by multiplying NAD27 Grid distances by 1.000325818.
- Government Plat Dependent Resurveys:
 T.26N., R.51E., M.D.M., accepted February 14, 2013.
 T.25N., R.50E., M.D.M., accepted September 29, 2014.
 T.25N., R.51E., M.D.M., accepted September 29, 2014.
 filed at BLM State Office, Reno, Nevada.
- BCI Property Accreages:
 APN 006-090-05 = 80.67 Acres
 APN 006-110-05 = 714.43 Acres
 APN 006-170-01 = 19.65 Acres
 APN 006-190-01 = 392.09 Acres
- BCI property vesting document GBS Deed, Eureka County file number 218584, recorded 9/13/2011.
- Positional Certainty: See NAC 625.651 to NAC 625.795. The monument positions meet Positional Certainty of Low Rural Land Boundary Surveys under NAC 625.666.

LEGEND

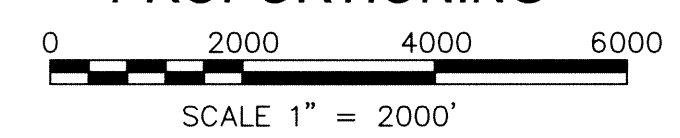
- ◆ FOUND GOVT. PUBLIC LAND SURVEY CORNER
SEE DEPENDENT RESURVEYS, NOTE 2 ABOVE
- CC CLOSING CORNER
CC DISTANCES CORRECTED TO INTERSECTION WITH CLOSING LINE
- PROPERTY CORNER FOUND 5/8" REBAR AND PLS6196 ALUM. CAP,
SEE PARCEL MAP E.U. CO. FILE NO. 224988
- SET 5/8" REBAR AND PLS6196 ALUM. CAP AND
STEEL FENCE POST GUARD

APN XXX EUREKA COUNTY ASSESSORS PARCEL NUMBER
 BCI SURFACE OWNER: BARRICK CORTEZ INC.
 BLM SURFACE OWNER: USA (BUREAU OF LAND MANAGEMENT)

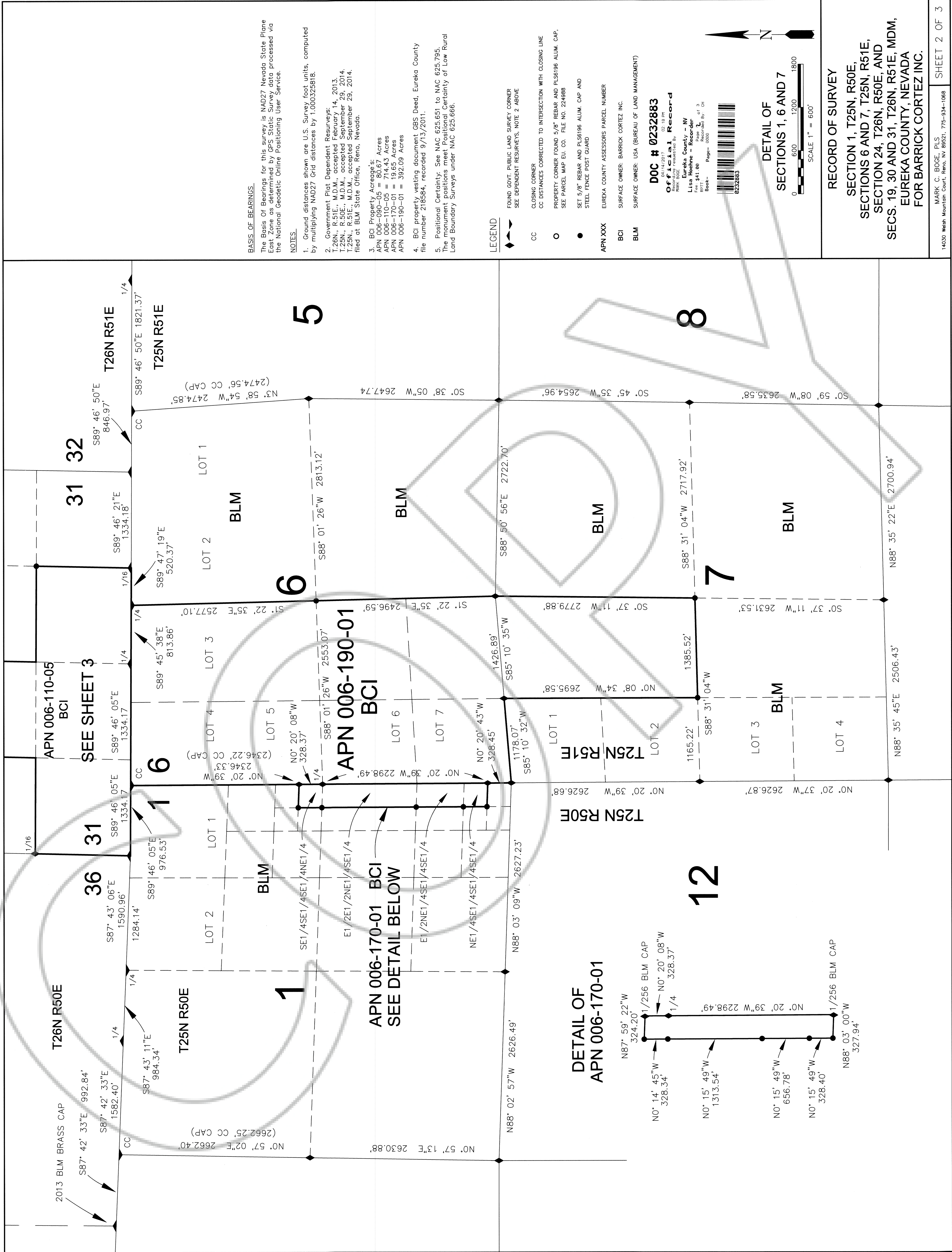
DOC # 0232883
02/14/2017 02:18 PM
Official Record
 Recording Requested By
 MARK BOGE
 Eureka County - NV
 Lisa Hoehne - Recorder
 Fee: \$41.00 Page 1 of 3
 \$011 Recorded By: CH
 Book- Page-



**OVERVIEW AND DETAIL
 OF T26N, R50-51E
 PROPORTIONING**



RECORD OF SURVEY
 SECTION 1, T25N, R50E,
 SECTIONS 6 AND 7, T25N, R51E,
 SECTION 24, T26N, R50E, AND
 SECS. 19, 30 AND 31, T26N, R51E, MDM,
 EUREKA COUNTY, NEVADA
 FOR BARRICK CORTEZ INC.



BASIS OF BEARINGS

The Basis of Bearings for this survey is NAD27 Nevada State Plane East Zone as determined by GPS Static Survey data processed via the National Geodetic Online Positioning User Service.

NOTES

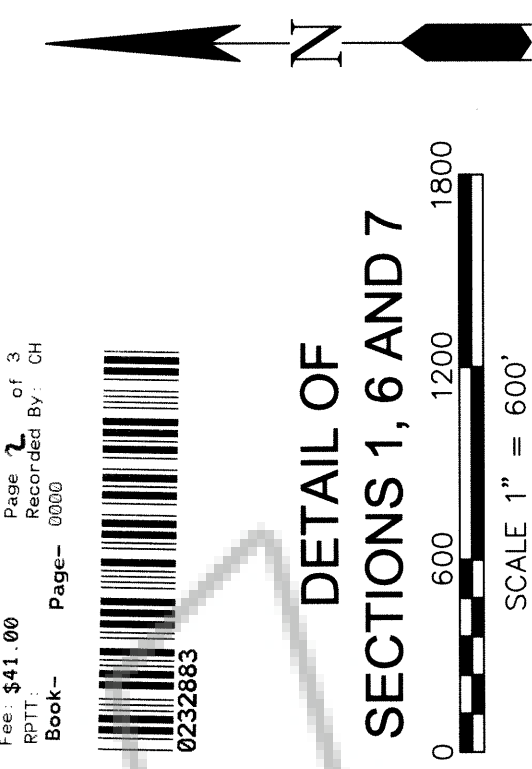
1. Ground distances shown are U.S. Survey foot units, computed by multiplying NAD27 Grid distances by 1.000325818.
2. Government Plat Dependent Resurveys:
 T26N., R51E., M.D.M., accepted February 14, 2013.
 T25N., R50E., M.D.M., accepted September 29, 2014.
 T25N., R51E., M.D.M., accepted September 29, 2014.
 filed at BLM State Office, Reno, Nevada.
3. BCI Property Acreage's:
 APN 006-090-05 = 80.67 Acres
 APN 006-110-05 = 714.43 Acres
 APN 006-170-01 = 19.65 Acres
 APN 006-190-01 = 392.09 Acres
4. BCI property vesting document G8S Deed, Eureka County file number 218584, recorded 9/13/2011.
5. Positional Certainty: See NAC 625.651 to NAC 625.795. The monument positions meet Positional Certainty of Low Rural Land Boundary Surveys under NAC 625.666.

LEGEND

- ◆ FOUND GOVT. PUBLIC LAND SURVEY CORNER
SEE DEPENDENT RESURVEYS, NOTE 2 ABOVE
- CC CLOSING CORNER
- CC DISTANCES CORRECTED TO INTERSECTION WITH CLOSING LINE
- PROPERTY CORNER FOUND 5/8" REBAR AND PLS6196 ALUM. CAP.
SEE PARCEL MAP EU. CO. FILE NO. 224988
- SET 5/8" REBAR AND PLS6196 ALUM. CAP AND
STEEL FENCE POST GUARD
- APN XXX EUREKA COUNTY ASSESSORS PARCEL NUMBER
- BCI SURFACE OWNER: BARRICK CORTEZ INC.
- BLM SURFACE OWNER: USA (BUREAU OF LAND MANAGEMENT)

DOC # 0232883
 04/14/2017 02:18 PM
 Official Record
 Mark 0002
 Eureka County - NV
 Lisa Hoehne - Recorder
 041.86
 041.86
 Record: 04/13/17
 Book: 0000
 Page: 0000

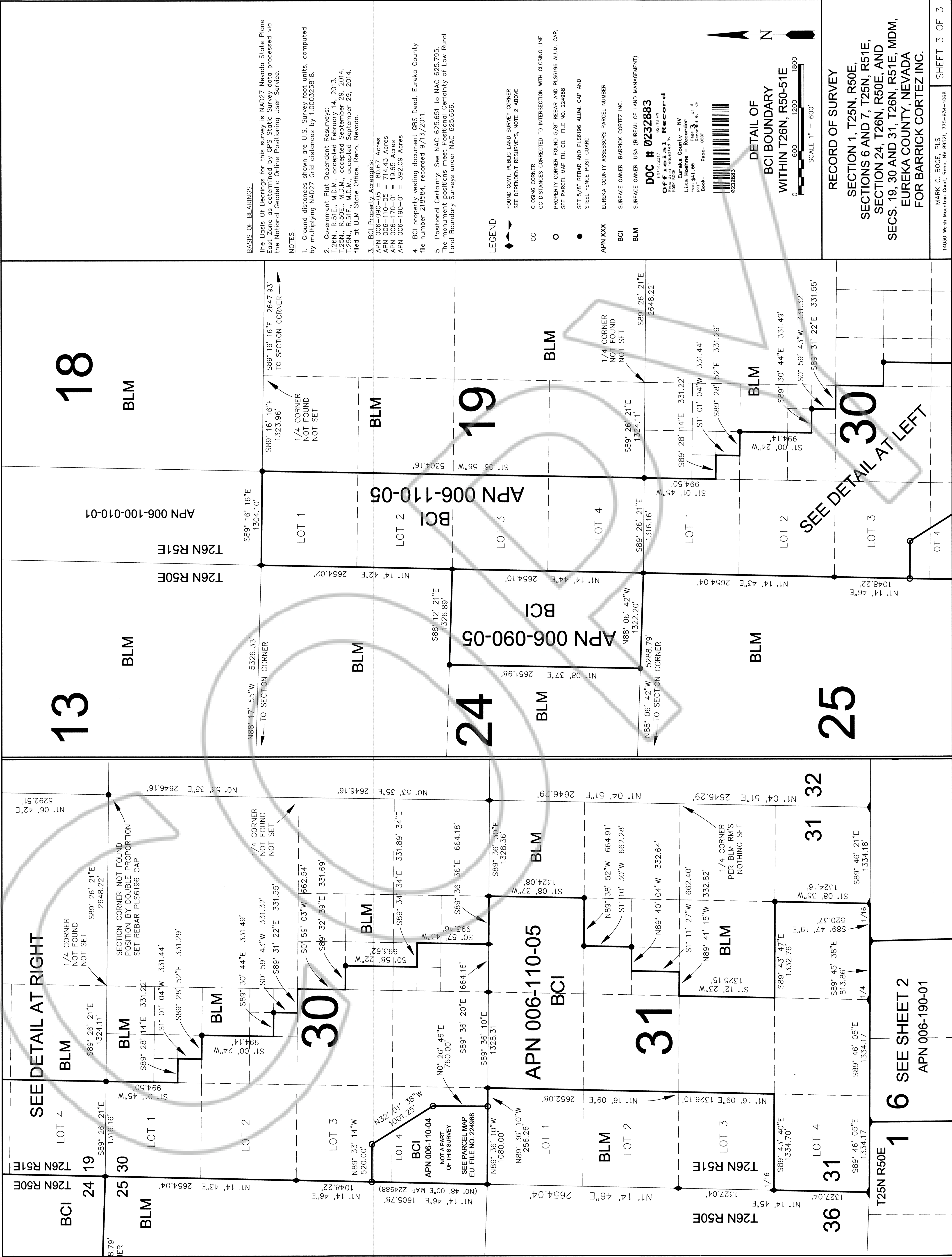
0232883



DETAIL OF
 SECTIONS 1, 6 AND 7

RECORD OF SURVEY

SECTION 1, T25N, R50E,
 SECTIONS 6 AND 7, T25N, R51E,
 SECTION 24, T26N, R50E, AND
 SECS. 19, 30 AND 31, T26N, R51E, MDM,
 EUREKA COUNTY, NEVADA
 FOR BARRICK CORTEZ INC.



BASIS OF BEARINGS

The Basis of Bearings for this survey is NAD27 Nevada State Plane East Zone as determined by GPS Static Survey data processed via the National Geodetic Online Positioning User Service.

NOTES

1. Ground distances shown are U.S. Survey foot units, computed by multiplying NAD27 Grid distances by 1.000325818.
2. Government Plat Dependent Resurveys:
 T.26N., R.51E., M.D.M., accepted February 14, 2013.
 T.25N., R.50E., M.D.M., accepted September 29, 2014.
 T.25N., R.51E., M.D.M., accepted September 29, 2014.
 filed at BLM State Office, Reno, Nevada.
3. BCI Property Acreage's:
 APN 006-090-05 = 89.67 Acres
 APN 006-110-05 = 714.43 Acres
 APN 006-170-01 = 19.65 Acres
 APN 006-190-01 = 392.09 Acres
4. BCI property vesting document GBS Deed, Eureka County file number 218584, recorded 9/13/2011.
5. Positional Certainty: See NAC 625.651 to NAC 625.795. The monument positions meet Positional Certainty of Low Rural Land Boundary Surveys under NAC 625.666.

LEGEND

- FOUND GOVT. PUBLIC LAND SURVEY CORNER
SEE DEPENDENT RESURVEYS, NOTE 2 ABOVE
- CC CLOSING CORNER
CC DISTANCES CORRECTED TO INTERSECTION WITH CLOSING LINE
- O PROPERTY CORNER FOUND 5/8" REBAR AND PLS6196 ALUM. CAP.
SEE PARCEL MAP EU. CO. FILE NO. 224988
- SET 5/8" REBAR AND PLS6196 ALUM. CAP AND STEEL FENCE POST GUARD

- APN XXX EUREKA COUNTY ASSESSORS PARCEL NUMBER
- BCI SURFACE OWNER: BARRICK CORTEZ INC.
- BLM SURFACE OWNER: USA (BUREAU OF LAND MANAGEMENT)

DOC # 0232883
 OFFICIAL Record
 Eureka County - NV
 Lisa Heehne - Recorder
 Fee: \$41.00
 Page: 3 of 3
 Printed: 08/08/2014
 Page: 0000



RECORD OF SURVEY
 SECTION 1, T25N, R50E,
 SECTIONS 6 AND 7, T25N, R51E,
 SECTION 24, T26N, R50E, AND
 SECS. 19, 30 AND 31, T26N, R51E, MDM,
 EUREKA COUNTY, NEVADA
 FOR BARRICK CORTEZ INC.