

DOC # 0232975

05/02/2017 01:08 PM

# CORNER RECORD

**Official Record**  
Recording requested By  
EUREKA COUNTY

SE1/4 SEC 14, T19N, R53E, MDM  
WITHIN RECORD OF SURVEY MAP 184804

Eureka County - NV  
**Lisa Hoehne - Recorder**

Fee: Page 1 of 2  
RPTT: Recorded By: CH  
Book- 601 Page- 0129

Recording Requested by:  
Summit Engineering Corporation  
Attn: Ryan Cook, PLS  
5405 Mae Anne Ave.  
Reno, NV 89523  
Tel: (775) 747-8550  
Fax: (775) 747-8559

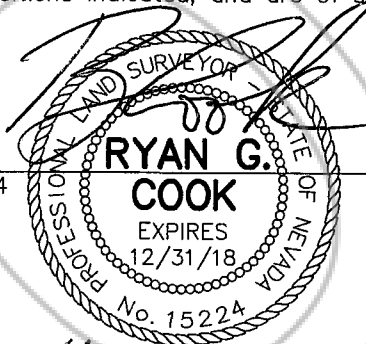


0232975

## SURVEYOR'S CERTIFICATE

I, Ryan G. Cook, a Professional Land Surveyor registered in the State of Nevada, certify that:

- 1). This corner record represents the establishment or restoration of a corner or accessory to a corner conducted under my direct supervision.
- 2). The monuments or accessories perpetuated are located within the Southeast Quarter of Section 14, Township 19 North, Range 53 East, MDM, Eureka County, Nevada and the establishment or restoration was completed on April 25, 2017.
- 3). This corner record has been filed pursuant to NRS 329.140 or 329.150 and complies with the provisions of NAC 329.010 and any local ordinances in effect on the date that the establishment or restoration was completed.
- 4). The monuments or witness monuments and accessories found are of the character shown and occupy the positions indicated, and are of sound durability.



Ryan G. Cook, PLS 15224

4-26-2017

## NARRATIVE & BASIS OF BEARINGS

The 1935 GLO brass cap monument on an iron pipe purported to be found on Record of Survey Map 184804, was destroyed during Eureka County Road Department snow plow activities sometime in early 2017. Record of Survey Map 184804 was used to restore the location of the Northeast corner of Block 73 as shown on page 2 of this Corner Record. Basis of Bearings is identical to said Record of Survey Map 184804.

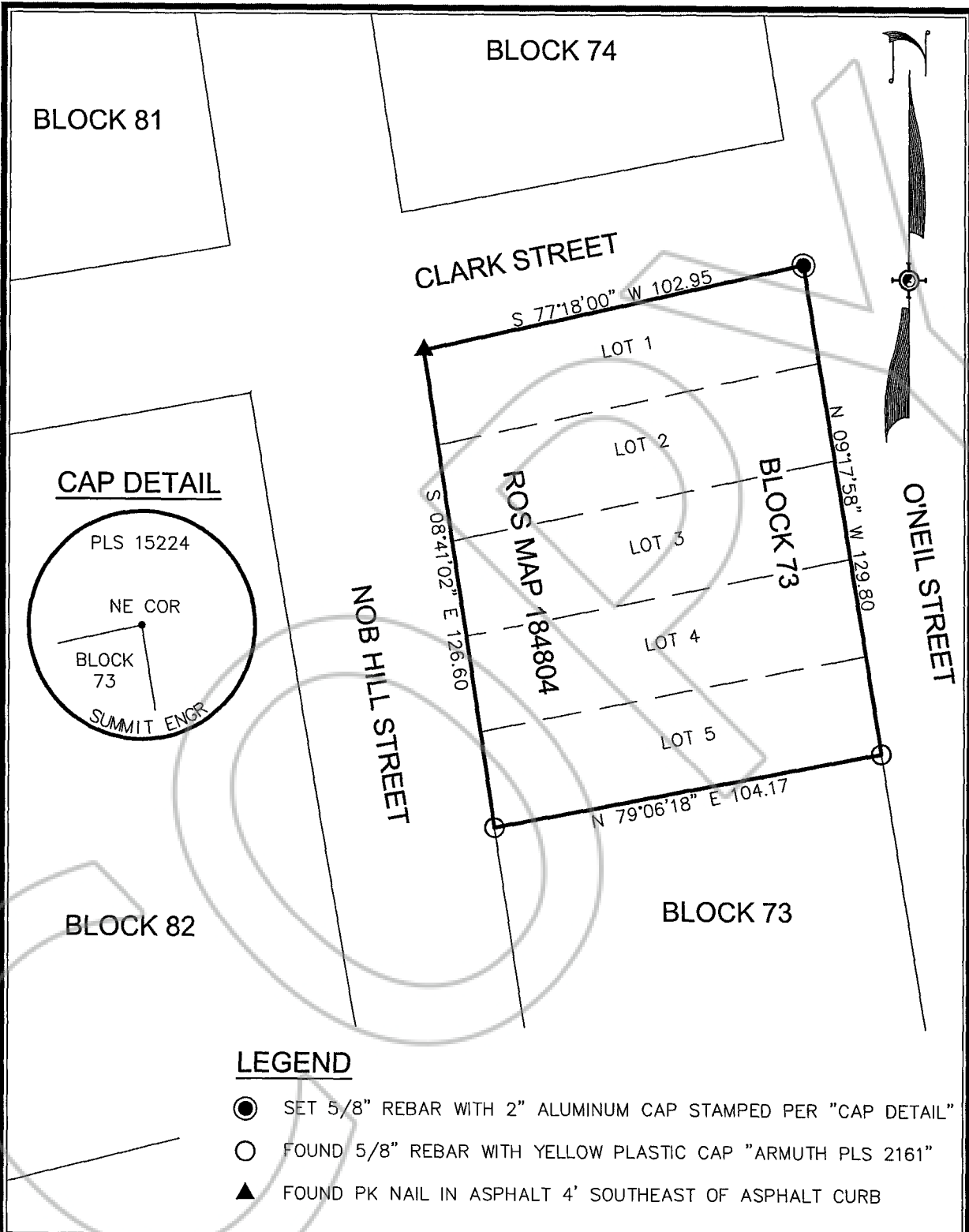
CORNER  
RECORD

EUREKA COUNTY  
NE CORNER BLOCK 73  
RESTORED PER ROS184804

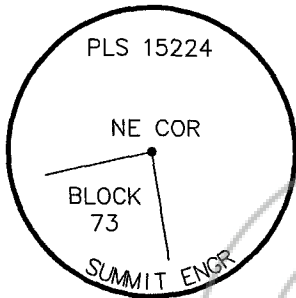


SHEET  
1

OF  
2



**CAP DETAIL**

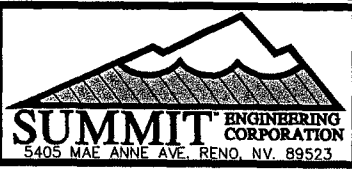


**LEGEND**

- SET 5/8" REBAR WITH 2" ALUMINUM CAP STAMPED PER "CAP DETAIL"
- FOUND 5/8" REBAR WITH YELLOW PLASTIC CAP "ARMUTH PLS 2161"
- ▲ FOUND PK NAIL IN ASPHALT 4' SOUTHEAST OF ASPHALT CURB

**CORNER RECORD**

SCALE 1"=40'  
 NE CORNER BLOCK 73  
 RESTORED PER ROS184804



SHEET 2  
 OF 2