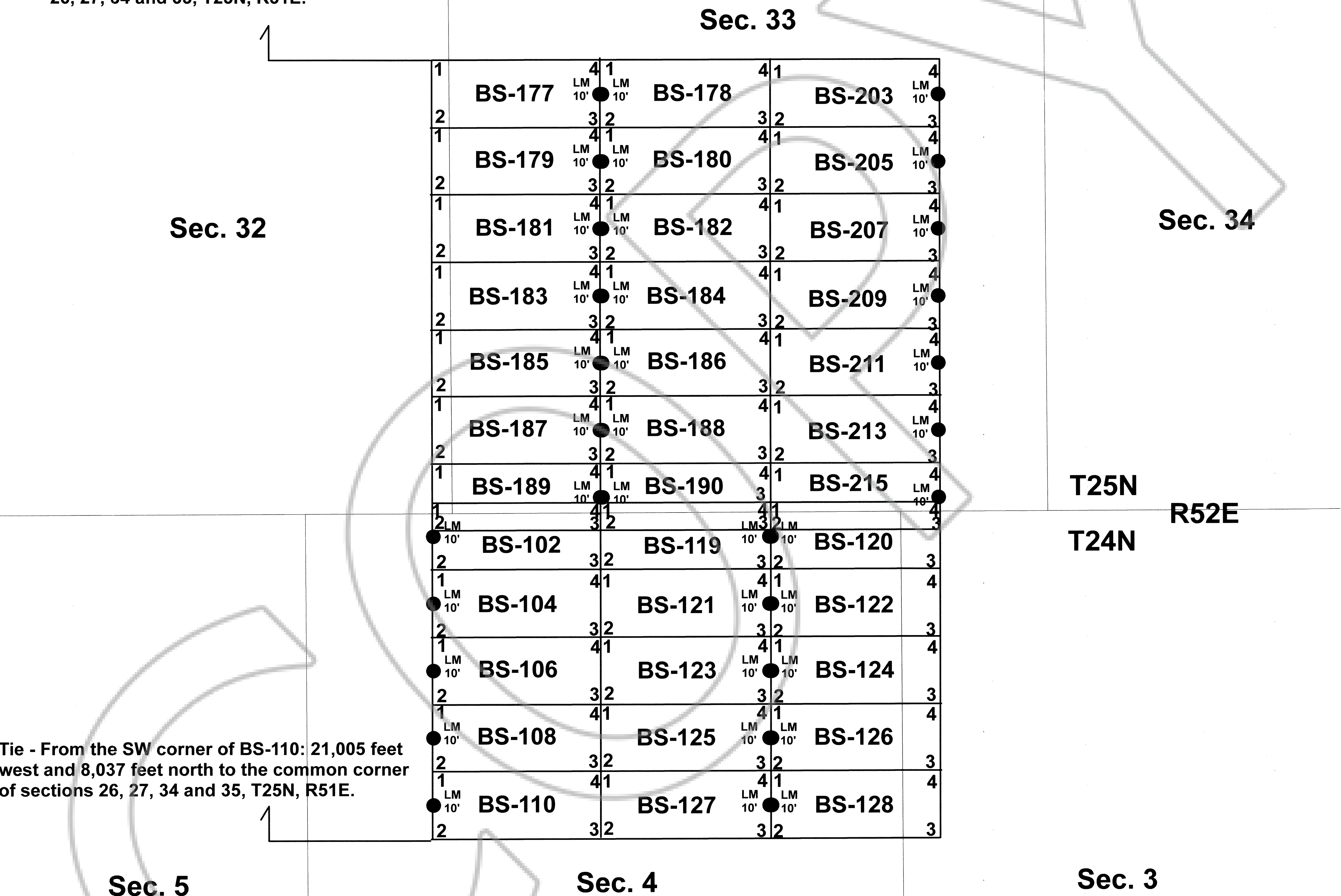


Map of BS-102, BS-104, BS-106, BS-108, BS-110, BS-119 thru BS-128, BS-177 thru BS-190, BS-203, BS-205, BS-207, BS-209, BS-211, BS-213 and BS-215 Lode Claims, Sections 32 and 33, T25N, R52E and Sections 3 and 4, T24N, R52E, Eureka County, Nevada, Alpha District.

**Located by Intermont Resources LLC, March 28-29, 2017
1110 Lay St., Winnemucca, Nevada 89445**

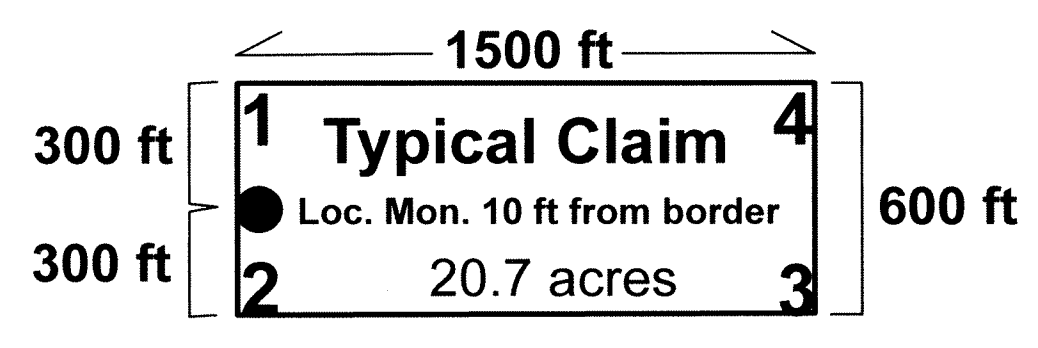
Tie - From the NW corner of BS-177: 21,005 feet west and 1,087 feet north to the common corner of sections 26, 27, 34 and 35, T25N, R51E.



Tie - From the SW corner of BS-110: 21,005 feet west and 8,037 feet north to the common corner of sections 26, 27, 34 and 35, T25N, R51E.

Claim Name	Date of Location
BS-177 thru BS-190	March 28, 2017
BS-102 thru BS-110	March 29, 2017
BS-119 thru BS-128	March 29, 2017
BS-203 thru BS-215	March 29, 2017

DOC # 0233232
03/29/2017 11:33 AM
Official Record
Recording requested by:
INTERMONT LLC
Eureka County - NV
Lisa Hoehne - Recorder
Fee: \$544.00 Page: 1 of 1
8911 Recorded By: CH
Book- Page- 0000



- 1 NW corner
 - 2 SW corner
 - 3 SE corner
 - 4 NE corner
- All claims are 600 x 1500 ft

