

SEC 27

SEC 34

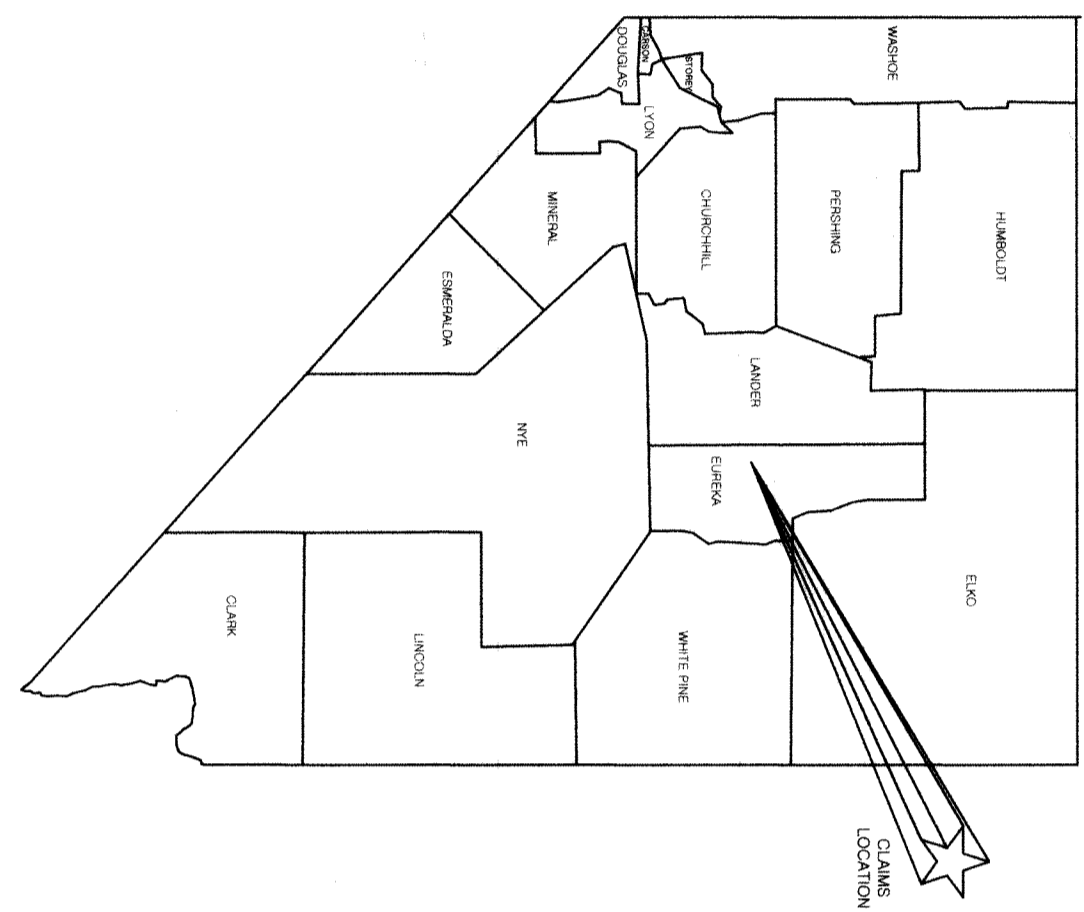
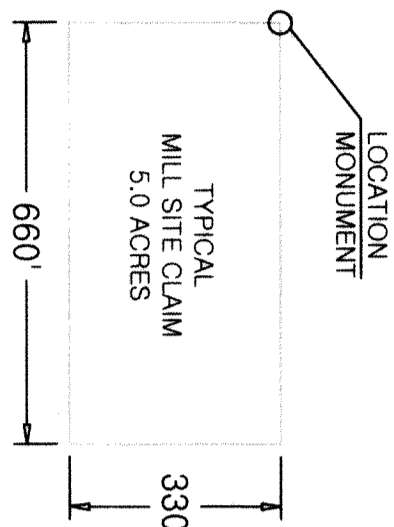
SEC 26

SEC 35

PATENTED

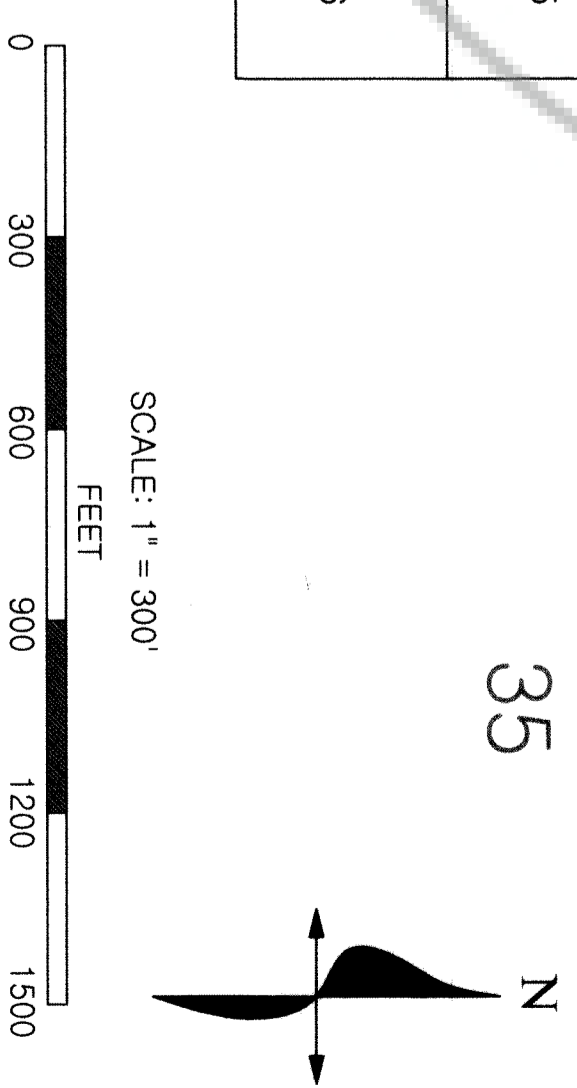
PATENTED

TIE POINT:
FROM QUAD SECTION
CORNERS 23, 24, 26 & 25
43.13' BEARING: N39°34'03"E



LOCATION DATE:
16 JUNE, 2017

USMC-MILL-01 1/4 SEC 35, SW 1/4 SW 1/4 SEC 26, T22N, R49E, NDM	USMC-MILL-09 1/4 SEC 35, SW 1/4 SW 1/4 SEC 26, T22N, R49E, NDM	USMC-MILL-17 1/4 SEC 35, SW 1/4 SW 1/4 SEC 26, T22N, R49E, NDM	USMC-MILL-27 1/4 SEC 35, SW 1/4 SW 1/4 SEC 26, T22N, R49E, NDM
USMC-MILL-02 1/4 SEC 35, SW 1/4 SW 1/4 SEC 26, T22N, R49E, NDM	USMC-MILL-10 1/4 SEC 35, SW 1/4 SW 1/4 SEC 26, T22N, R49E, NDM	USMC-MILL-18 1/4 SEC 35, SW 1/4 SW 1/4 SEC 26, T22N, R49E, NDM	USMC-MILL-28 1/4 SEC 35, SW 1/4 SW 1/4 SEC 26, T22N, R49E, NDM
USMC-MILL-03 1/4 SEC 35, SW 1/4 SW 1/4 SEC 26, T22N, R49E, NDM	USMC-MILL-11 1/4 SEC 35, SW 1/4 SW 1/4 SEC 26, T22N, R49E, NDM	USMC-MILL-20 1/4 SEC 35, SW 1/4 SW 1/4 SEC 26, T22N, R49E, NDM	USMC-MILL-30 1/4 SEC 35, SW 1/4 SW 1/4 SEC 26, T22N, R49E, NDM
USMC-MILL-04 1/4 SEC 35, SW 1/4 SW 1/4 SEC 26, T22N, R49E, NDM	USMC-MILL-12 1/4 SEC 35, SW 1/4 SW 1/4 SEC 26, T22N, R49E, NDM	USMC-MILL-21 1/4 SEC 35, SW 1/4 SW 1/4 SEC 26, T22N, R49E, NDM	USMC-MILL-31 1/4 SEC 35, SW 1/4 SW 1/4 SEC 26, T22N, R49E, NDM
USMC-MILL-05 1/4 SEC 35, SW 1/4 SW 1/4 SEC 26, T22N, R49E, NDM	USMC-MILL-13 1/4 SEC 35, SW 1/4 SW 1/4 SEC 26, T22N, R49E, NDM	USMC-MILL-22 1/4 SEC 35, SW 1/4 SW 1/4 SEC 26, T22N, R49E, NDM	USMC-MILL-32 1/4 SEC 35, SW 1/4 SW 1/4 SEC 26, T22N, R49E, NDM
USMC-MILL-06 1/4 SEC 35, SW 1/4 SW 1/4 SEC 26, T22N, R49E, NDM	USMC-MILL-14 1/4 SEC 35, SW 1/4 SW 1/4 SEC 26, T22N, R49E, NDM	USMC-MILL-23 1/4 SEC 35, SW 1/4 SW 1/4 SEC 26, T22N, R49E, NDM	USMC-MILL-33 1/4 SEC 35, SW 1/4 SW 1/4 SEC 26, T22N, R49E, NDM
USMC-MILL-07 1/4 SEC 35, SW 1/4 SW 1/4 SEC 26, T22N, R49E, NDM	USMC-MILL-15 1/4 SEC 35, SW 1/4 SW 1/4 SEC 26, T22N, R49E, NDM	USMC-MILL-24 1/4 SEC 35, SW 1/4 SW 1/4 SEC 26, T22N, R49E, NDM	USMC-MILL-34 1/4 SEC 35, SW 1/4 SW 1/4 SEC 26, T22N, R49E, NDM
USMC-MILL-08 1/4 SEC 35, SW 1/4 SW 1/4 SEC 26, T22N, R49E, NDM	USMC-MILL-16 1/4 SEC 35, SW 1/4 SW 1/4 SEC 26, T22N, R49E, NDM	USMC-MILL-25 1/4 SEC 35, SW 1/4 SW 1/4 SEC 26, T22N, R49E, NDM	USMC-MILL-35 1/4 SEC 35, SW 1/4 SW 1/4 SEC 26, T22N, R49E, NDM
		USMC-MILL-26 1/4 SEC 35, SW 1/4 SW 1/4 SEC 26, T22N, R49E, NDM	USMC-MILL-36 1/4 SEC 35, SW 1/4 SW 1/4 SEC 26, T22N, R49E, NDM



DOC # 0233275
06/16/2017 01:27 PM
Official Record
Recording requested by
US MINE CORP
Eureka County - NV
Lisa Hoehne - Recorder
Fee: \$544.00 Page 1 of 1
Recorded By: CH
Book- Page-

0233275



US MINE CORP
P.O. BOX 580
Ione, Ca. 95640
(209) 790-4359

USMC MILL SITE CLAIMS
ANTELOPE MINING DISTRICT
EUREKA COUNTY, NEVADA
TOWNSHIP 22 NORTH,
RANGE 49 EAST, MOUNT
DIABLO, NEVADA

LOCATED BY:
GUY REED & SHAWN HARRISON
AGENT FOR:
US MINE CORPORATION
DWG. BY: SEH DESIGN BY: SEH

REVISIONS		
REF.	DESCRIPTION	APVD. DATE

SCALE:
1" = 300'
DATE:
06-16-17
SHEET:
01 OF 01