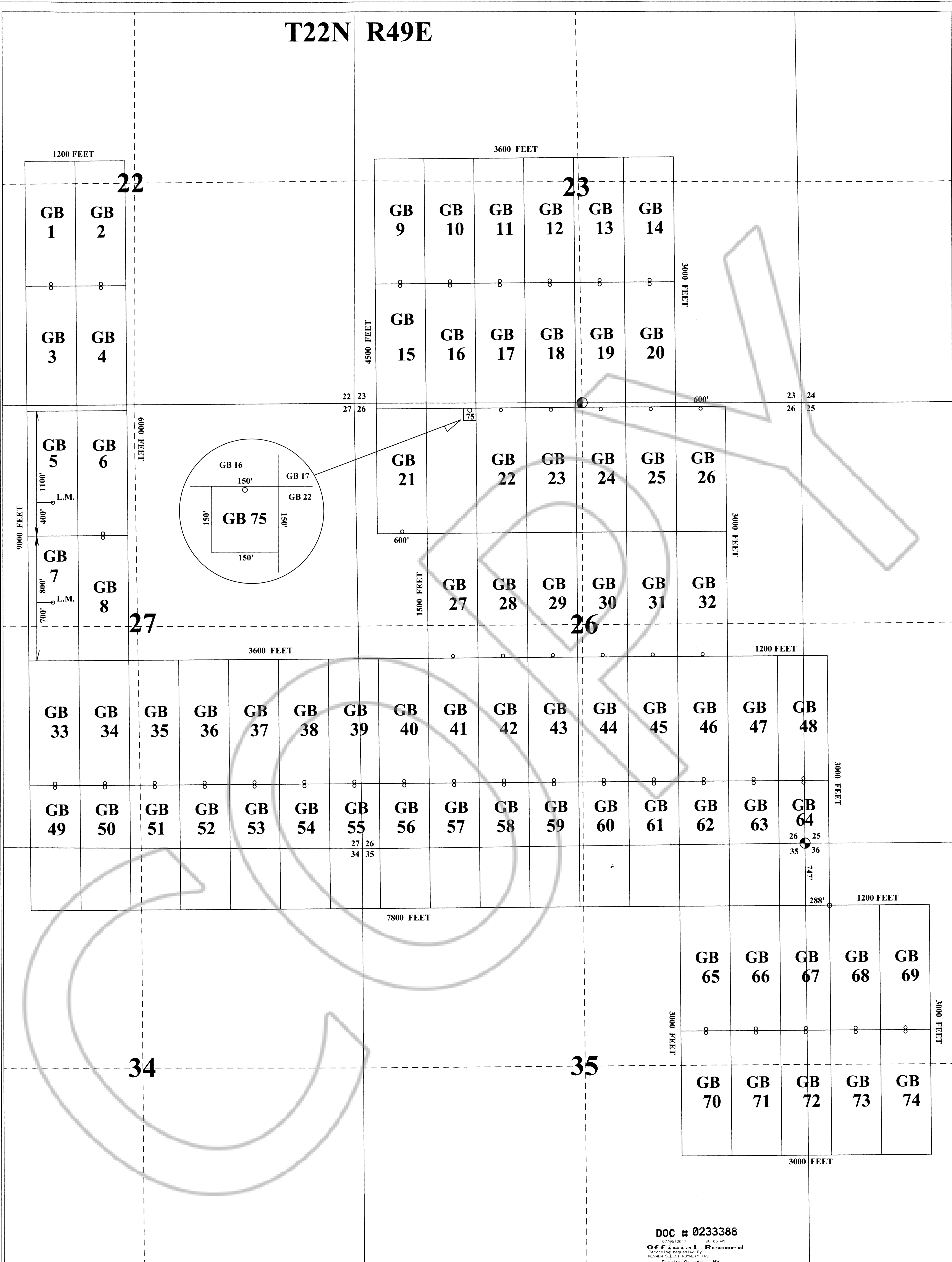
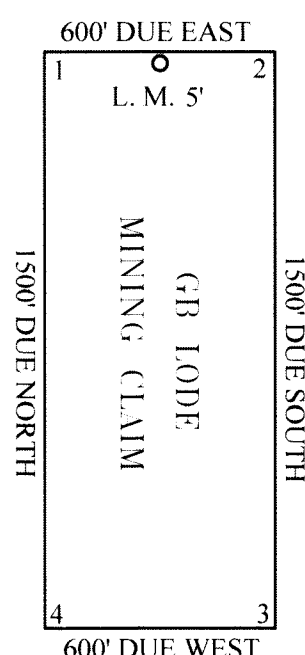
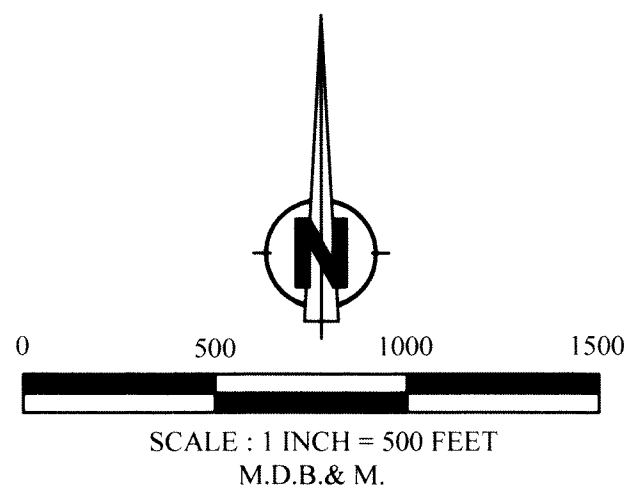




T22N R49E



TYPICAL CLAIM & CORNER NUMBERS




-  INDICATES A FOUND SECTION CORNER.
-  INDICATES A FOUND 1/4 SECTION CORNER.

TIE POINTS:
 FROM THE NW CORNER OF SECTION 36, T22N, R49E, BEAR EAST 288 FEET
 THEN SOUTH 747 FEET TO CORNER # 3 THE SE CORNER OF GB # 64.

TOWNSHIP SECTION LINES PROJECTED FROM THE B.L.M. GCDB.
 ALL CLAIM CORNERS AND LOCATION MONUMENTS ARE 1.5" X 1.5" X 4' WOOD POST.
 ALL CLAIM LOCATION MONUMENTS SET IN 5 FEET FROM CLAIM END CENTER UNLESS NOTED.
 ALL CLAIM ARE 600 FEET WIDE BY 1500 FEET LONG UNLESS NOTED ON MAP.

DOC # 0233388
07/05/2017 08:05 PM
Official Record
 RECORDED & INDEXED BY:
 NEVADA SELECT ROYALTY, INC.
 Eureka County - NV
 Lisa Hoehne - Recorder
 Fee: \$1,129.00 Page 1 of 1
 RPTT Recorded By: CH
 Book- Page-



LOCATION DATES:

APRIL 21, 2017 -- GB 9-20 & 22-74
 APRIL 23, 2017 -- GB 1-8; 21; & 75

DISCOVER, LOCATER, AND CLAIMANT:
 NEVADA SELECT ROYALTY, INC.
 P.O. BOX 18127
 RENO, NEVADA 89511

GB LODE MINING CLAIMS
 NUMBERS 1-75.

SECTIONS 22;23;25-27; & 34-36, T22N, R49E, M.D.B.&M.

EUREKA COUNTY, NEVADA