

**DOC# 233471**

08/03/2017

10:32AM

**Official Record**

Assessor's Parcel Number – N/A – unpatented mining claims

Requested By

THOMAS P. ERWIN P.C.

**Eureka County - NV**

**Lisa Hoehne - Recorder**

Page: 1 of 5

Fee: \$18.00

Recorded By CH

RPTT: \$0.00

Book- 0604

Page- 0047

Recorded at the request of  
and when recorded return to:  
Kinetic Gold (US) Inc.  
5375 Kietzke Lane, Suite 110  
Reno, Nevada 89511



0233471

The undersigned affirm that this document does not  
contain the personal information of any person.

**Memorandum of Mining Lease and Option to Purchase Agreement  
RW Claims**

Harvest Gold Corporation (U.S.) (collectively "Owner") and Kinetic Gold (US) Inc., a Nevada corporation ("Kinetic") have entered into the Mining Lease and Option to Purchase Agreement RW Claims (the "Agreement") dated effective January 1, 2012, in accordance with which Owner has leased to Kinetic and has granted to Kinetic the option to purchase the RW unpatented mining claims situated in Eureka County, Nevada, more particularly described in Exhibit A attached to and by this reference incorporated in this Memorandum. The primary term of the Agreement is five (5) years.

The addresses of the parties for purposes of the Agreement and this Memorandum are:

If to Owner: Harvest Gold Corporation (U.S.)  
301-260 West Esplanade  
North Vancouver, B.C., Canada V7M 3G7

If to Kinetic: Kinetic Gold (US) Inc.  
5375 Kietzke Lane, Suite 110  
Reno, Nevada 89511

Dated effective January 1, 2012..

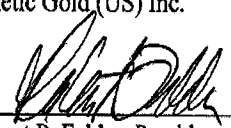
Harvest Gold Corporation (U.S.)

By   
Richard J. Mark, Director

DO NOT MARK, PRINT, SIGN OR TYPE OUTSIDE THE LINED MARGIN

Kinetic Gold (US) Inc.

By

  
Robert P. Felder, President

DO NOT MARK, PRINT, SIGN OR TYPE OUTSIDE THE LINED MARGIN

2



233471

Book: 604 08/03/2017  
Page: 48 2 of 5

Book: 604 08/03/2017  
Page: 49 3 of 5

# Mining Lease and Option to Purchase Agreement

## Exhibit A

### A. Description of Property (see attached list of unpatented mining claims)

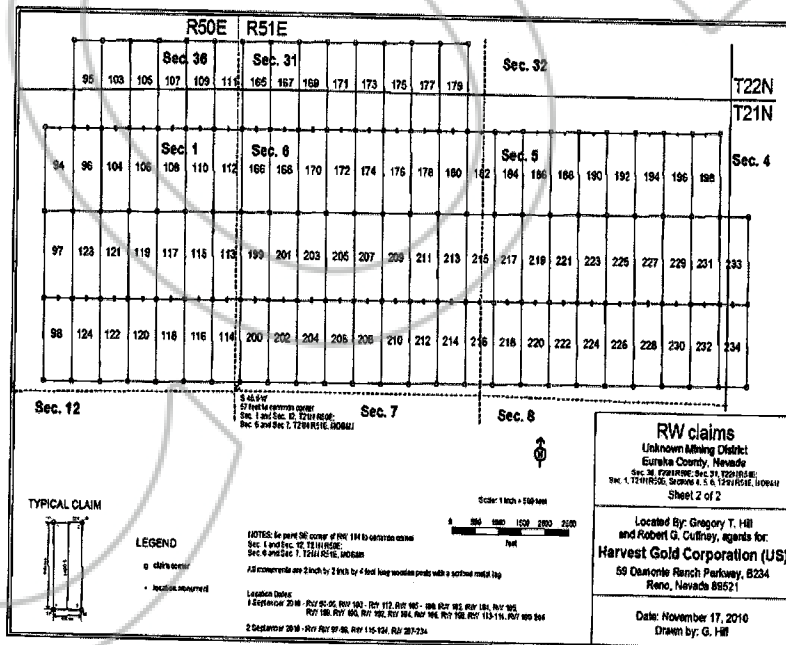
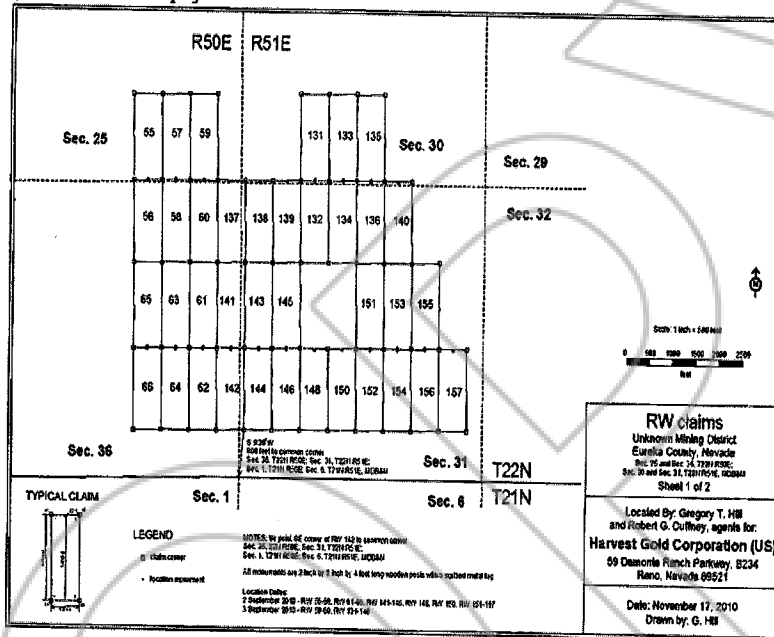
#### HARVEST GOLD CORPORATION (U.S.) - RW CLAIMS

| Claim Number | Claim Name | Claim Number | Claim Name |
|--------------|------------|--------------|------------|
| NMC1029761   | RW 150     | NMC1029823   | RW 221     |
| NMC1029762   | RW 148     | NMC1029824   | RW 220     |
| NMC1029763   | RW 146     | NMC1029825   | RW 219     |
| NMC1029764   | RW 145     | NMC1029826   | RW 218     |
| NMC1029765   | RW 144     | NMC1029827   | RW 217     |
| NMC1029766   | RW 143     | NMC1029828   | RW 216     |
| NMC1029767   | RW 142     | NMC1029829   | RW 215     |
| NMC1029768   | RW 141     | NMC1029830   | RW 214     |
| NMC1029769   | RW 140     | NMC1029831   | RW 213     |
| NMC1029770   | RW 139     | NMC1029832   | RW 212     |
| NMC1029771   | RW 138     | NMC1029833   | RW 211     |
| NMC1029772   | RW 137     | NMC1029834   | RW 210     |
| NMC1029773   | RW 136     | NMC1029835   | RW 209     |
| NMC1029774   | RW 135     | NMC1029836   | RW 208     |
| NMC1029775   | RW 134     | NMC1029837   | RW 207     |
| NMC1029776   | RW 133     | NMC1029838   | RW 206     |
| NMC1029777   | RW 132     | NMC1029839   | RW 205     |
| NMC1029778   | RW 131     | NMC1029840   | RW 204     |
| NMC1029779   | RW 130     | NMC1029841   | RW 203     |
| NMC1029780   | RW 129     | NMC1029842   | RW 202     |
| NMC1029781   | RW 128     | NMC1029843   | RW 201     |
| NMC1029782   | RW 127     | NMC1029844   | RW 200     |
| NMC1029783   | RW 126     | NMC1029845   | RW 199     |
| NMC1029784   | RW 125     | NMC1029846   | RW 198     |
| NMC1029785   | RW 124     | NMC1029847   | RW 197     |
| NMC1029786   | RW 123     | NMC1029848   | RW 196     |
| NMC1029787   | RW 122     | NMC1029849   | RW 195     |
| NMC1029788   | RW 121     | NMC1029850   | RW 194     |
| NMC1029789   | RW 120     | NMC1029851   | RW 193     |
| NMC1029790   | RW 119     | NMC1029852   | RW 192     |
| NMC1029791   | RW 118     | NMC1029853   | RW 191     |
| NMC1029792   | RW 117     | NMC1029854   | RW 190     |
| NMC1029793   | RW 116     | NMC1029855   | RW 189     |
| NMC1029794   | RW 115     | NMC1029856   | RW 188     |
| NMC1029795   | RW 114     | NMC1029857   | RW 187     |
| NMC1029796   | RW 113     | NMC1029858   | RW 186     |
| NMC1029797   | RW 112     | NMC1029859   | RW 185     |
| NMC1029798   | RW 111     | NMC1029860   | RW 184     |
| NMC1029799   | RW 110     | NMC1029861   | RW 183     |
| NMC1029800   | RW 109     | NMC1029862   | RW 182     |
| NMC1029801   | RW 108     | NMC1029863   | RW 181     |
| NMC1029802   | RW 107     | NMC1029864   | RW 180     |
| NMC1029803   | RW 106     | NMC1029865   | RW 179     |
| NMC1029804   | RW 105     | NMC1029866   | RW 178     |
| NMC1029805   | RW 104     | NMC1029867   | RW 177     |
| NMC1029806   | RW 103     | NMC1029868   | RW 176     |
| NMC1029807   | RW 102     | NMC1029869   | RW 175     |
| NMC1029808   | RW 101     | NMC1029870   | RW 174     |
| NMC1029809   | RW 100     | NMC1029871   | RW 173     |
| NMC1029810   | RW 99      | NMC1029872   | RW 172     |
| NMC1029811   | RW 98      | NMC1029873   | RW 171     |
| NMC1029812   | RW 97      | NMC1029874   | RW 170     |
| NMC1029813   | RW 96      | NMC1029875   | RW 169     |
| NMC1029814   | RW 95      | NMC1029876   | RW 168     |
| NMC1029815   | RW 94      | NMC1029877   | RW 167     |
| NMC1029816   | RW 93      | NMC1029878   | RW 166     |
| NMC1029817   | RW 92      | NMC1029879   | RW 165     |
| NMC1029818   | RW 91      | NMC1029880   | RW 164     |
| NMC1029819   | RW 90      | NMC1029881   | RW 163     |
| NMC1029820   | RW 89      | NMC1029882   | RW 162     |
| NMC1029821   | RW 88      | NMC1029883   | RW 161     |
| NMC1029822   | RW 87      | NMC1029884   | RW 160     |
|              |            | NMC1029885   | RW 159     |

DO NOT MARK, PRINT, SIGN OR TYPE OUTSIDE THE LINED MARGIN



B. Area of Interest  
[see attached maps]



DO NOT MARK, PRINT, SIGN OR TYPE OUTSIDE THE LINED MARGIN

