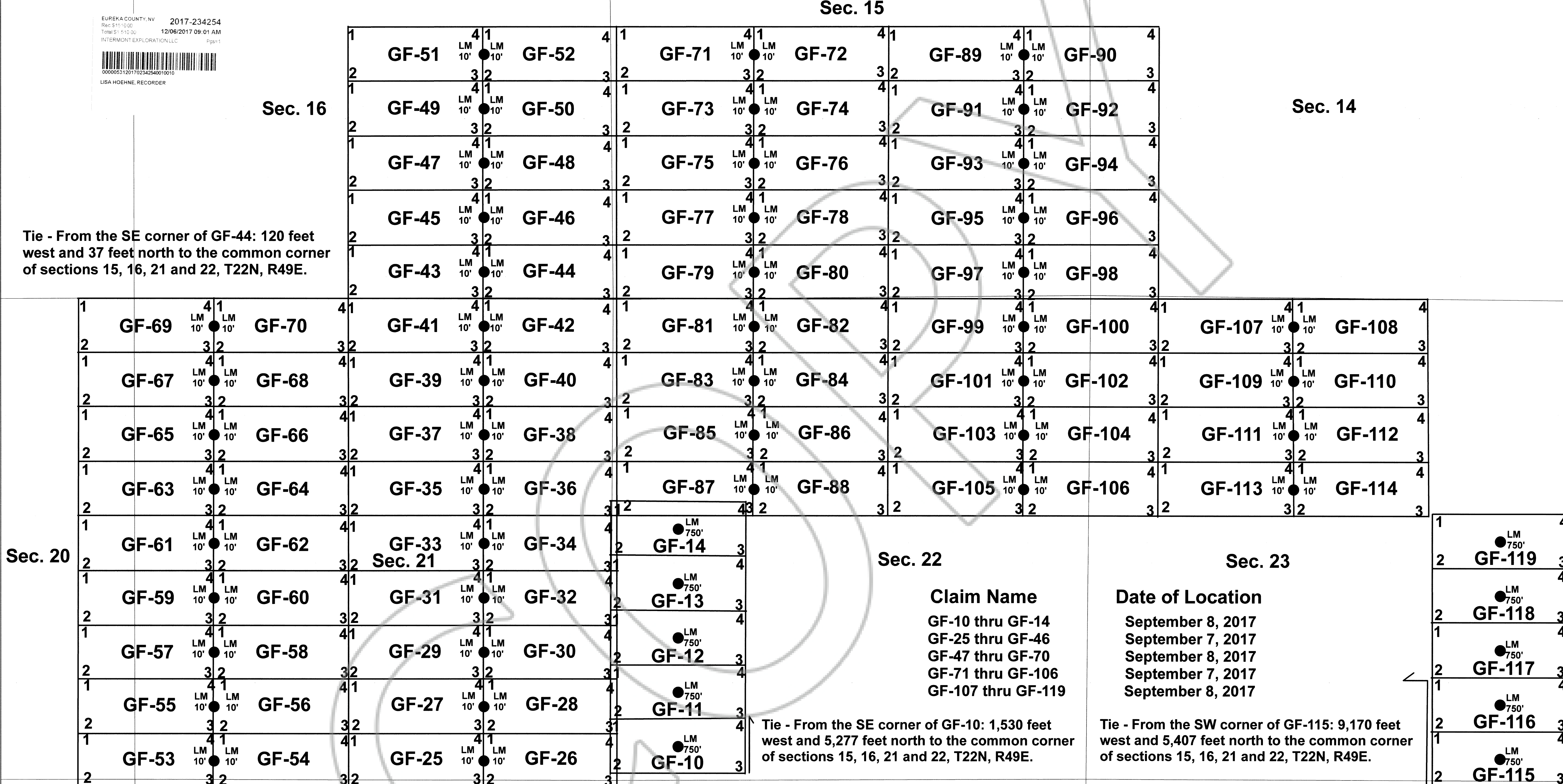


**Map of GF-10 through GF-14 and GF-25 through GF-119**  
**Lode Claims, Sections 15-16, 20-23 and 26-29,**  
**T22N, R49E, Eureka County, Nevada, Gold Bar District.**

**Located by Intermont Exploration, LLC, Sept. 7-8, 2017**  
**1110 Lay St., Winnemucca, Nevada 89445**

EUREKA COUNTY, NV 2017-234254  
 Rec 5:11:00 12/06/2017 09:01 AM  
 Total \$: 510.00  
 INTERMONT EXPLORATION, LLC  
 Pgs: 1  
 00000531201702342540010010  
 LISA HOEHNE, RECORDER

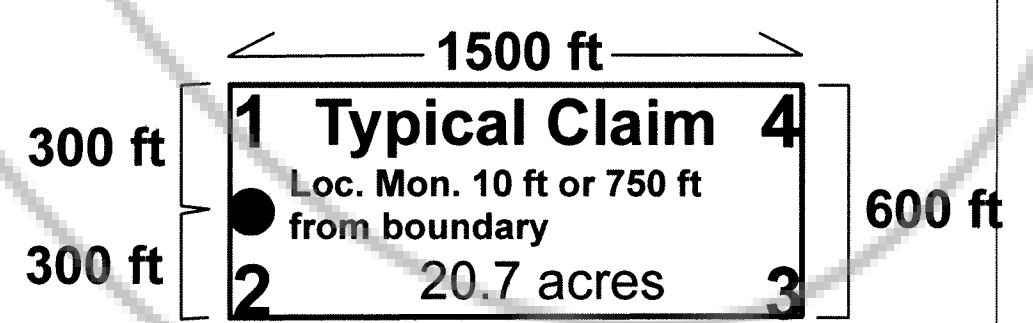


Tie - From the SE corner of GF-44: 120 feet west and 37 feet north to the common corner of sections 15, 16, 21 and 22, T22N, R49E.

Tie - From the SE corner of GF-10: 1,530 feet west and 5,277 feet north to the common corner of sections 15, 16, 21 and 22, T22N, R49E.

Claim Name	Date of Location
GF-10 thru GF-14	September 8, 2017
GF-25 thru GF-46	September 7, 2017
GF-47 thru GF-70	September 8, 2017
GF-71 thru GF-106	September 7, 2017
GF-107 thru GF-119	September 8, 2017

Tie - From the SW corner of GF-115: 9,170 feet west and 5,407 feet north to the common corner of sections 15, 16, 21 and 22, T22N, R49E.



1 NW corner  
 2 SW corner  
 3 SE corner  
 4 NE corner

All claims are 600 x 1500 ft

