

EUREKA COUNTY, NV

Rec: \$25.00

Total: \$25.00

KINROSS GOLD USA INC

2018-235876

08/28/2018 02:58 PM

Pgs=1



00002372201802358760010016

LISA HOEHNE, RECORDER

Lode Claim Location
Map for LGD 42R
Sheet 1 of 1

Locator: Kinross Gold U.S.A., Inc.
5075 South Syracuse St., 8th Floor
Denver, CO. 80237

Field Work By: T&T Exploration L.L.C.

Note:

Datum: 1927; Projection: UTM

Units: US Survey Feet

All Bearings are reported in UTM Grid North.

All Degrees & Minutes reported to the nearest minute.

All Distances are reported in feet to the nearest foot.

23 24

26 25

The NW Corner of LGD 42R bears
S55°59'E and is 11,104' from the
NW corner of
Section 22 T24N R50E

T24N R50E

LGD 42R

RECEIVED

AUG 27 2018

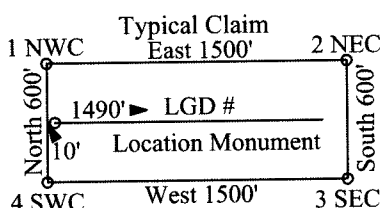
BLM NVSO IAC

The depicted Township, Range and Sections are a product of
the Bureau of Land Management, Cadastral Survey.
Commonly known as the PLSS, CadNSDI that originates
from the BLM GCDB program.

26

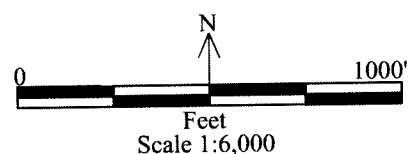
25

LGD 42R lode claim was located
on August 7, 2018 in
Sections 25 & 26, Township 24 North,
Range 50 East
in Eureka County, Nevada.



Notes:

Location Monument is set 10' from
claim end line. All location and corner
monuments are 2" X 2" X 4' wooden
posts with scribed metal tags.
Claim is 600' by 1500'.



Legend_42R_claim_map.dwg
August 20, 2018
Drawn By: G.I.S. Land Services
Datum: 1927, Projection: UTM,
Zone: 11, Units: Feet

ENC 1178500