

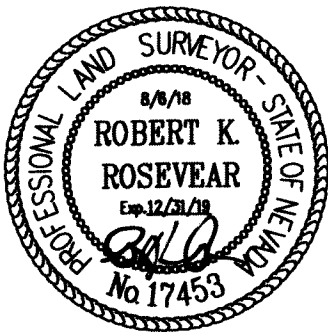
SECTIONS 13, T.19 N., R.53 E., M.D.B. & M.
EUREKA COUNTY

SURVEYOR'S CERTIFICATE

I, ROBERT K. ROSEVEAR, A PROFESSIONAL LAND SURVEYOR LICENSED IN THE STATE OF NEVADA, CERTIFY THAT:

- THIS PLAT REPRESENTS THE RESULTS OF A SURVEY CONDUCTED UNDER MY DIRECT SUPERVISION AT THE INSTANCE OF HOLLON MOLL.
- THE LANDS SURVEYED LIE WITHIN SECTION 13, T.19 N., R.53 E., M.D.B. & M., EUREKA AND WHITE PINE COUNTY, NEVADA AND THE SURVEY WAS COMPLETED ON JUNE 22, 2018.
- THIS PLAT COMPLIES WITH APPLICABLE STATUTES OF THIS STATE AND ANY LOCAL ORDINANCES IN EFFECT ON THE DATE THAT THE SURVEY WAS COMPLETED, AND THE SURVEY WAS CONDUCTED IN ACCORDANCE WITH CHAPTER 625 OF THE NEVADA ADMINISTRATIVE CODE.
- THE MONUMENTS DEPICTED ON THE PLAT ARE OF THE CHARACTER SHOWN, OCCUPY THE POSITIONS INDICATED, AND ARE OF SUFFICIENT DURABILITY.

ROBERT K. ROSEVEAR, P.L.S.
NEVADA NO. 17453



NOTES

- THE PURPOSE OF THIS SURVEY IS TO MONUMENT THE NORTHERLY BOUNDARY CORNERS OF LOT 7, BLOCK 4, PER REFERENCE No. 1.
- THIS MAP DOES NOT DIVIDE ANY LAND FOR TRANSFER AND IS NOT IN CONFLICT WITH NRS 278.010 TO NRS 278.630.

BASIS OF BEARINGS

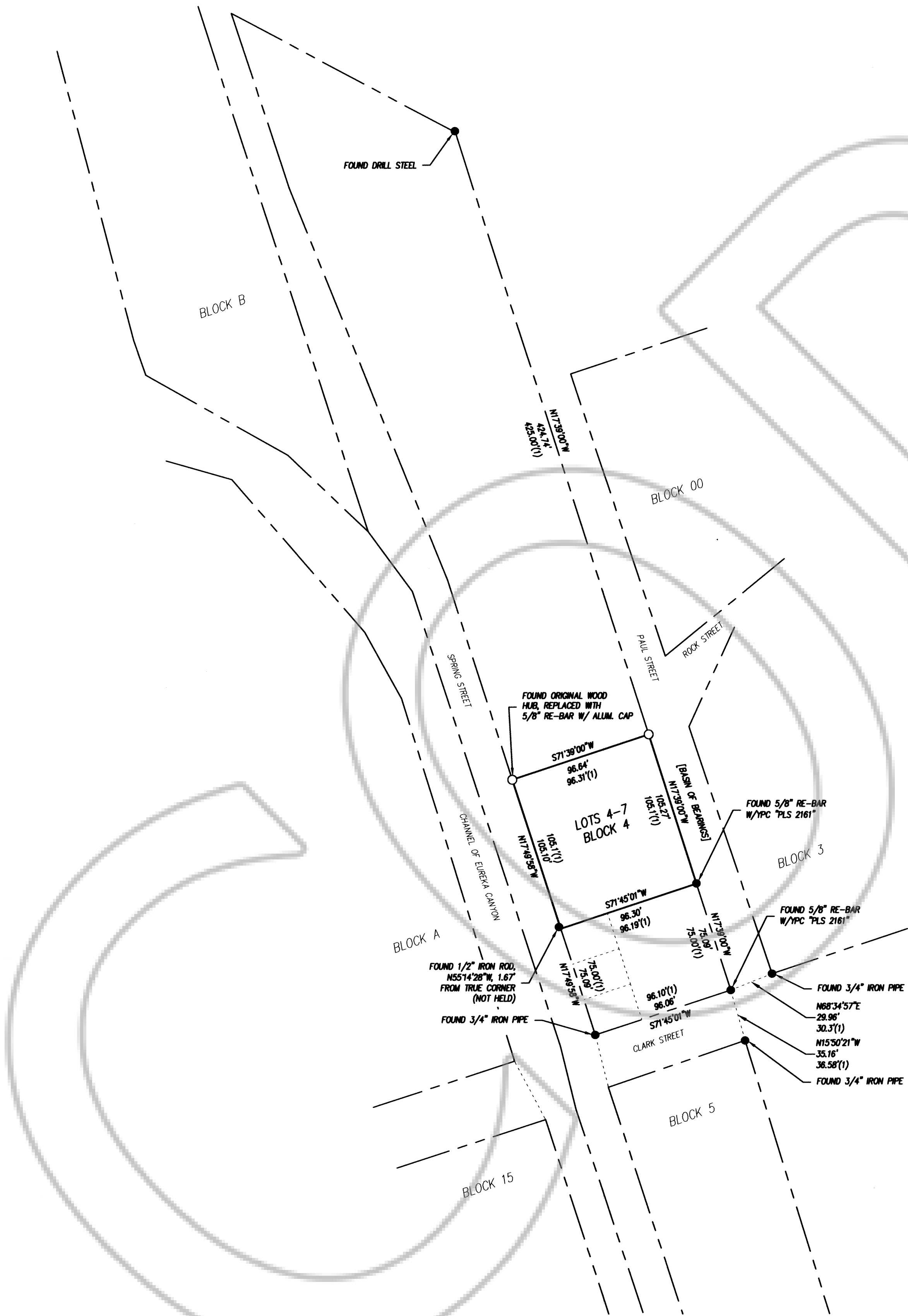
THE BASIS OF BEARINGS FOR THIS MAP IS NORTH 17°33' WEST, ALONG THE EASTERLY LINE OF BLOCK 4, BETWEEN FOUND MONUMENTS AS SHOWN, PER REFERENCE No. 1.

REFERENCES

- PLAT OF THE TOWNSITE OF EUREKA NEVADA, FILE No. 127448, RECORDED JUNE 20, 1989, EUREKA COUNTY.

LEGEND

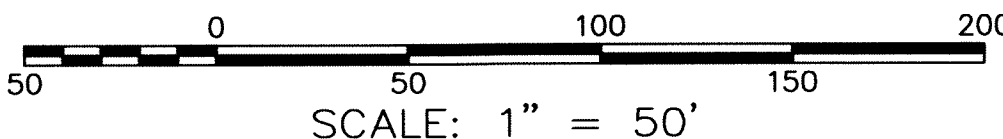
- = FOUND MONUMENT AS NOTED
- = SET 5/8" REBAR WITH A 1-1/2" ALUM. CAP STAMPED PLS 17453.



EUREKA COUNTY, NV 2018-235903
Rec \$27.00 Total \$27.00 09/07/2018 10:32 AM
BASIN ENGINEERING CORP Pgs: 1



LISA HOEHNE RECORDER



JOB#: 1806033

FILED AT THE REQUEST OF
BASIN ENGINEERING

RECORD OF SURVEY

FOR
HOLLON MOLL
SECTIONS 13, T.19 N., R.53 E., M.D.B. & M.
EUREKA & WHITE PINE COUNTY, NEVADA

BBasin
Engineering

Consulting Engineers & Land Surveyors
1070 E. Ashman Street, Reno, NV 89501
Phone: (775) 289-9800 Fax: (775) 289-9802

SHEET
1
OF
1